

Prepared by & Return to: Kirk D. Reicks, HRS, LLC, 10 East Main Street, New Hampton, IA 50659, Phone 641-394-2725

United States Public Land Survey Corner Certificate

Land Survey Monument situated in
Section 32, Township 97 North, Range 13 West of the Fifth Principal Meridian, Chickasaw County, Iowa.
On file in **Book 159, Page 296** in the County Recorder's Office.

This certificate is being prepared in compliance with Iowa Code Chapter 355.11 because:

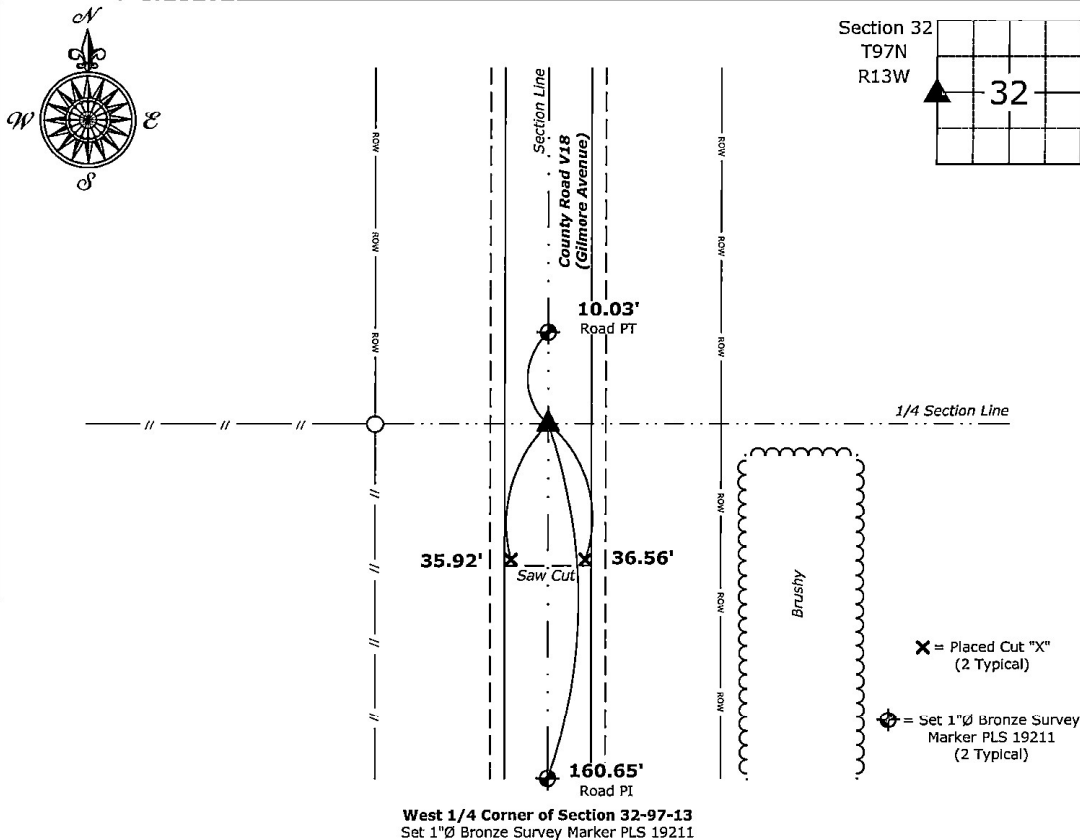
- ☐ There is no certificate on file for this corner.
- ☒ There are no longer three valid ties of record.
- ☒ There are changes to reference ties of record.
- ☒ There is change of monumentation of record.
- ☐ To clarify description of record monument (ties).

Monument Description and Remarks:

West 1/4 Corner: Found Cut "X" with information obtained from the previously recorded Section Corner Certificate. Set 1"Ø Bronze Survey Marker PLS 19211 with coordinates of the found location obtained prior to highway reconstruction. Corner reset in conjunction with Project No. STP-S-CO19(113)-5E-19.

Plan View - Not to Scale

(Show a minimum of three reference ties to durable physical objects, relevant monuments and physical conditions that will enable recovery of the corner.)



COR C
31-97-13



I hereby certify that this land surveying document was prepared and the related survey work was performed by me or under my direct personal supervision and that I am a duly licensed Land Surveyor under the laws of the State of Iowa.

Kirk D. Reicks 7-11-2024
Kirk D. Reicks Date:

License number 19211

My license renewal date is December 31, 2024.

Sheets covered by this seal: Individual sheet only

List Corner to be Indexed

Corner	Section	Township	Range
W 1/4	32	97	13

Project Number: 2024-811

FB: 2024 Construction, Page(s) 2-18

File: S:_Projects - NHO\County Control Systems - NHO\CHICKASAW\CHICK-3 - 2024.dwg, 7/10/2024 9:06:22 AM