



# United States Public Land Survey Corner Certificate

Land Survey Monument situated in  
Section **19**, Township **97** North, Range **13** West of the Fifth Principal Meridian, **Chickasaw** County, Iowa.  
On file in **Document #2007-2120** in the County Recorder's Office.

**This certificate is being prepared in compliance with Iowa Code Chapter 355.11 because:**

- ☐ There is no certificate on file for this corner.  
☐ There are no longer three valid ties of record.  
☒ There are changes to reference ties of record.  
☒ There is change of monumentation of record.  
☐ To clarify description of record monument (ties).

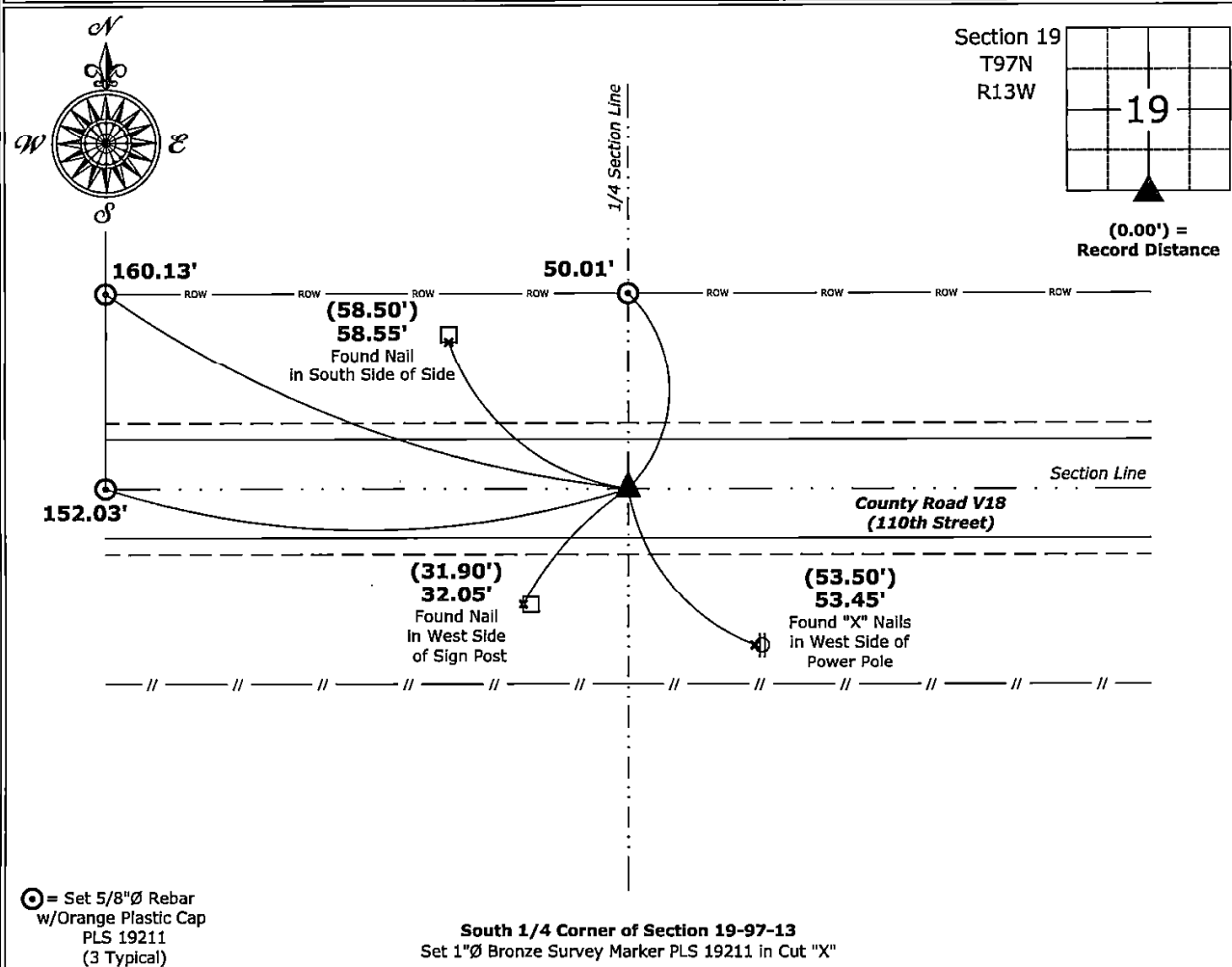
**Monument Description and Remarks:**

**South 1/4 Corner:**

Found Cut "X" with information obtained from the previously recorded Section Corner Certificate. Set 1"Ø Bronze Survey Marker PLS 19211 in Center of Cut "X" to aid in the future recovery of said monument.

### Plan View - Not to Scale

(Show a minimum of three reference ties to durable physical objects, relevant monuments and physical conditions that will enable recovery of the corner.)



I hereby certify that this land surveying document was prepared and the related survey work was performed by me or under my direct personal supervision and that I am a duly licensed Land Surveyor under the laws of the State of Iowa.

*W. D. Paul* 4-11-2025

Kirk D. Reicks

Date:

License Number 19211

My license renewal date is December 31, 2026.  
Sheets covered by this seal: Individual sheet only

## List Corner to be Indexed

Corner	Section	Township	Range
S 1/4	19	97	13

Project Number: 2025-036

FB: Chickasaw 14, Page(s) 8-9

File: S:\\_ Projects - NHO\County Control Systems - NHO\CHICKASAW\CHICK-3 (Alta Vista)\CHICK-3 - 2025.dwg, 4/11/2025 4:30:23 PM