



United States Public Land Survey Corner Certificate

Land Survey Monument situated in
Section **20**, Township **97** North, Range **13** West of the Fifth Principal Meridian, **Chickasaw** County, Iowa.
Not on file in the County Recorder's Office.

This certificate is being prepared in compliance with Iowa Code Chapter 355.11 because:

- ☒ There is no certificate on file for this corner.
☐ There are no longer three valid ties of record.
☐ There are changes to reference ties of record.
☐ There is change of monumentation of record.
☐ To clarify description of record monument (ties).

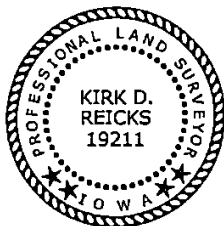
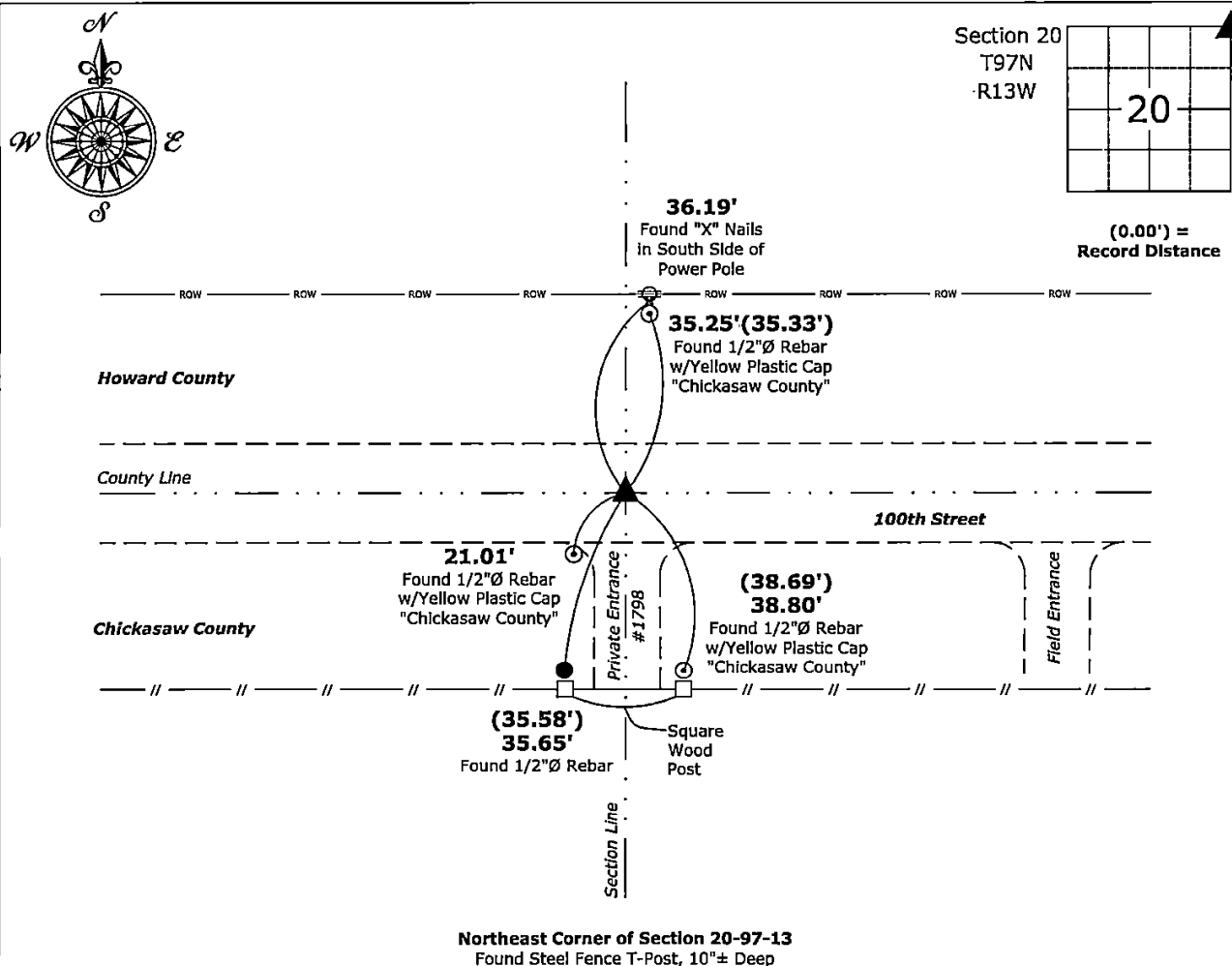
Monument Description and Remarks:

Northeast Corner:

Found Steel Fence T-Post, 10'± Deep with information obtained from the Chickasaw County Engineer's Office and from a Section Corner Certificate recorded in Book M, Page 347, on file in the Howard County Recorder's Office, Cresco, Iowa.

Plan View - Not to Scale

(Show a minimum of three reference ties to durable physical objects, relevant monuments and physical conditions that will enable recovery of the corner.)



I hereby certify that this land surveying document was prepared and the related survey work was performed by me or under my direct personal supervision and that I am a duly licensed Land Surveyor under the laws of the State of Iowa.

Kirk D. Reicks 1-10-2025
Kirk D. Reicks Date:

License number 19211
My license renewal date is December 31, 2026.
Sheets covered by this seal: Individual sheet only

List Corner to be Indexed

Corner	Section	Township	Range
NE	20	97	13

Project Number: 2024-154

FB: Chickasaw 13, Page(s) 31-32