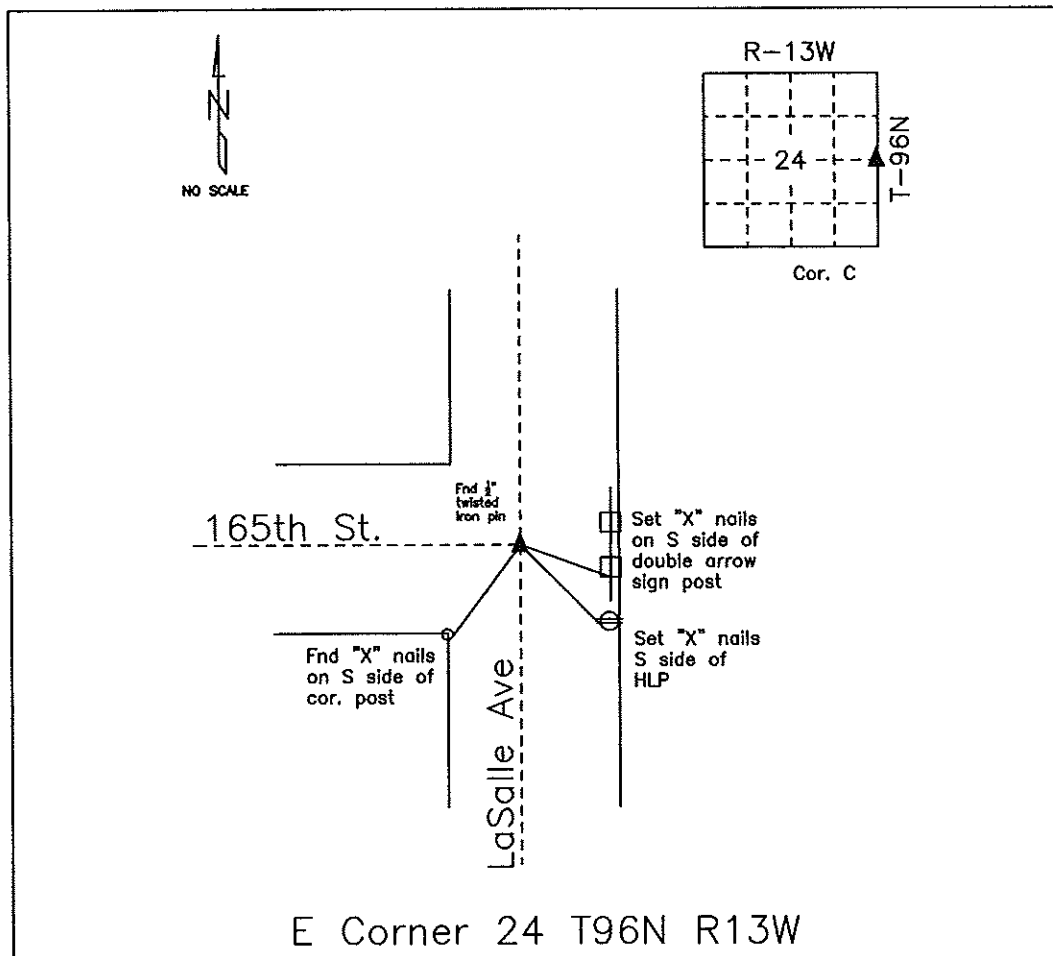


COUNTY ENGINEER'S SECTION CORNER PRESERVATION RECORD

LAND SURVEY MONUMENT LOCATED IN SECTION 24, TOWNSHIP 96 N
NORTH, RANGE 13 W, OF THE 5TH P.M. Chickasaw COUNTY, IOWA
PREVIOUSLY RECORDED BOOK 154, PAGE 498



MONUMENT DESCRIPTION AND NARRATIVE Found 1/2" twisted iron pin

Previously recorded by Gary Casady (PLS 12532) in Book 154, Page 498 as the E corner of section

24, T96N, R13W

All ties are slope chained

I AM NOT A REGISTERED LAND SURVEYOR UNDER THE LAWS OF THE STATE OF IOWA

JIM FOSTER CHICKASAW CO. DATE: 09/14/09

UNITED STATES PUBLIC LAND SURVEY CORNER CERTIFICATE

OF

Land Survey Monuments situated in Section 24, Township 96 NORTH, Range 13 WEST, of the Fifth Principal Meridian, CHICKASAW County, Iowa.
 Previously recorded in NONE (book, page, document number, etc.) in County Recorder's Office.

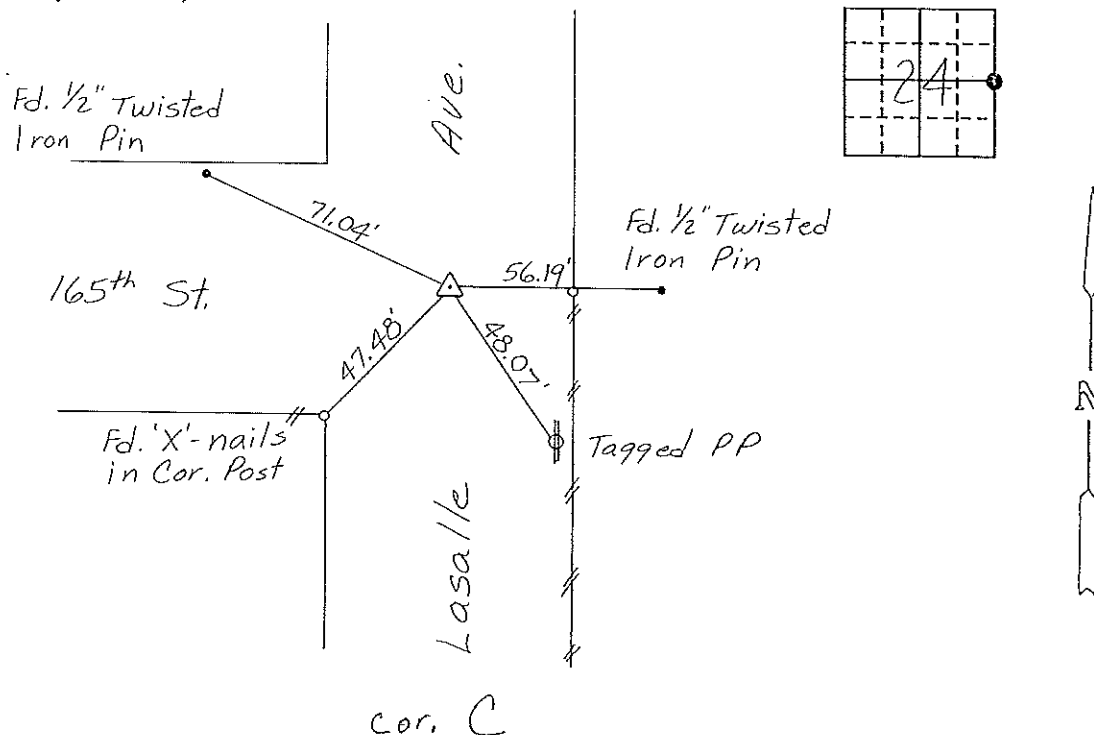
(Show reason for preparing this certificate, the evidence and detailed procedures used in establishing the corner positions and monumentation found or placed.)

Monument Description and Remarks: E 1/4 CORNER, SECTION 24-T96N-R13W:

Found 1/2" Rebar

PLAN - VIEW

(Show a minimum of three reference ties to durable physical objects, relevant monuments and physical conditions that will enable recovery of the corner.)



E 1/4 CORNER, SECTION 24-T96N-R13W

I hereby certify that the survey work was completed and this certificate was prepared by me or under my direct personal supervision and that I am a duly registered land surveyor under the laws of the state of Iowa.

Signature: Gary L. Casady
 Name typed or printed: Gary L. Casady
 Date: 4-21-94 Reg. No. 12532
 My Registration Expires December 31, 1994

SEAL



Corners	List Corners to be Indexed	Section	Twp	Range
E 1/4	24	96N	13W	

corner C 24-96-13

Placed in Tree Book
 5/25

154-498