

Shirley Proyna, Recorder, Chickasaw County

# United States Public Land Survey Corner Certificate

Land Survey Monument situated in  
Section **31**, Township **97** North, Range **11** West of the Fifth Principal Meridian, **Chickasaw** County, Iowa.  
Not on file in the County Recorder's Office.

This certificate is being prepared in compliance with Iowa Code Chapter 355.11 because:

- ☒ There is no certificate on file for this corner.  
☐ There are no longer three valid ties of record.  
☐ There are changes to reference ties of record.  
☐ There is change of monumentation of record.  
☐ To clarify description of record monument (ties).

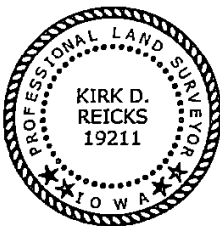
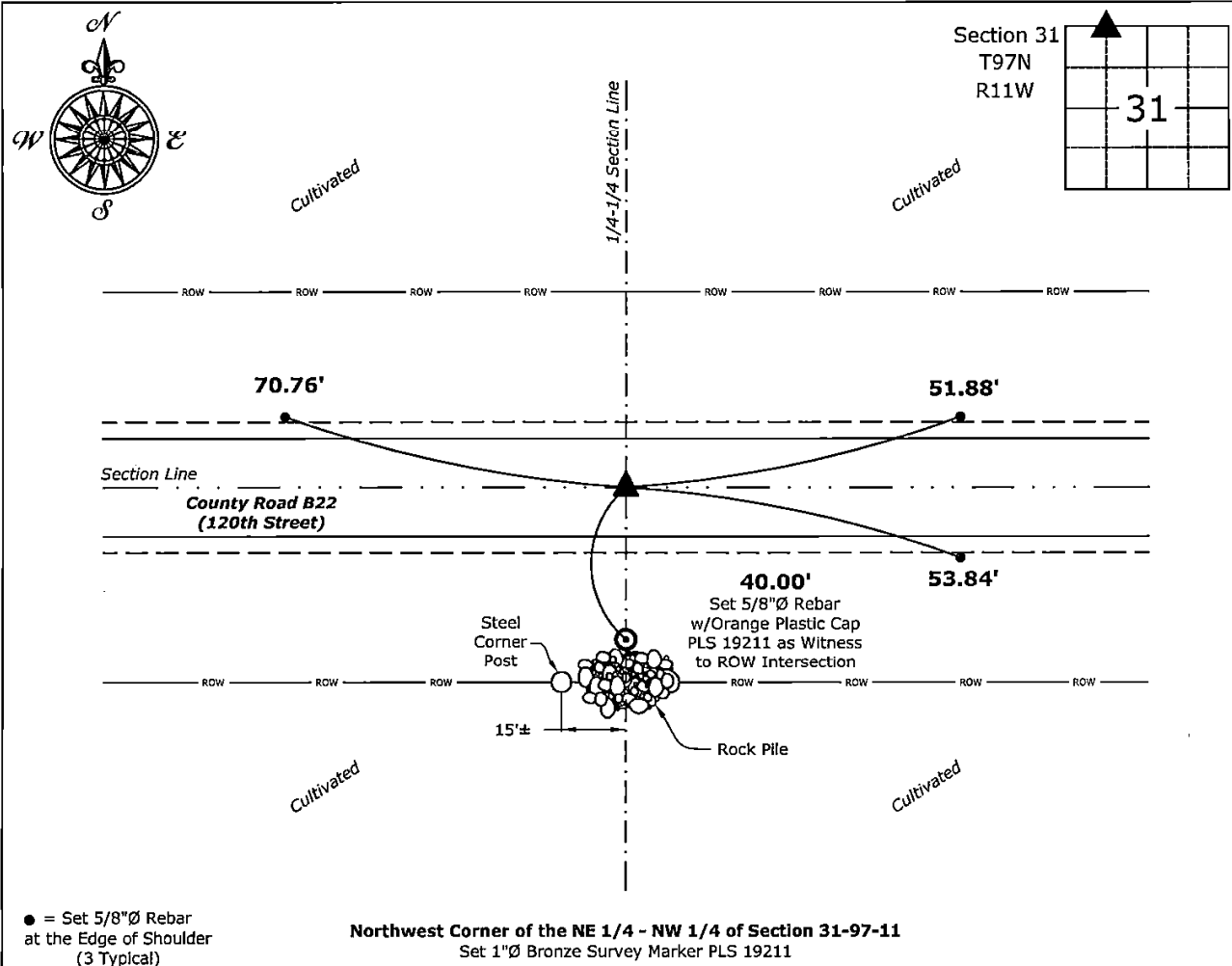
**Monument Description and Remarks:**

**Northwest Corner of the NE 1/4 - NW 1/4:**

Set 1"Ø Bronze Survey Marker PLS 19211 on line between the Northwest and North 1/4 Corners of said Section, using single proportion methods, with information obtained from the Original GLO Plat of said Township.

### Plan View - Not to Scale

(Show a minimum of three reference ties to durable physical objects, relevant monuments and physical conditions that will enable recovery of the corner.)



I hereby certify that this land surveying document was prepared and the related survey work was performed by me or under my direct personal supervision and that I am a duly licensed Land Surveyor under the laws of the State of Iowa.

Kirk P. Reicks 5-5-2025  
Kirk P. Reicks Date:

License Number 19211

My license renewal date is December 31, 2026.

My license renewal date is December 31, 2020.  
Sheets covered by this seal: Individual sheet only

## List Corner to be Indexed

| Corner   | Section | Township | Range |
|----------|---------|----------|-------|
| NW-NE-NW | 31      | 97       | 11    |

Project Number: 2025-043

FB: Chickasaw 13, Page(s) 44-46

File: S:\Projects - NHO\County Control Systems - NHO\CHICKASAW\CHICK-7\CHICK-7 - 2025.dwg, 5/5/2025 12:09:03 PM