

[illegible]

# United States Public Land Survey Corner Certificate

Land Survey Monument situated in  
Section **31**, Township **97** North, Range **11** West of the Fifth Principal Meridian, **Chickasaw** County, Iowa.  
Not on file in the County Recorder's Office.

This certificate is being prepared in compliance with Iowa Code Chapter 355.11 because:

- ☒ There is no certificate on file for this corner.  
☐ There are no longer three valid ties of record.  
☐ There are changes to reference ties of record.  
☐ There is change of monumentation of record.  
☐ To clarify description of record monument (ties).

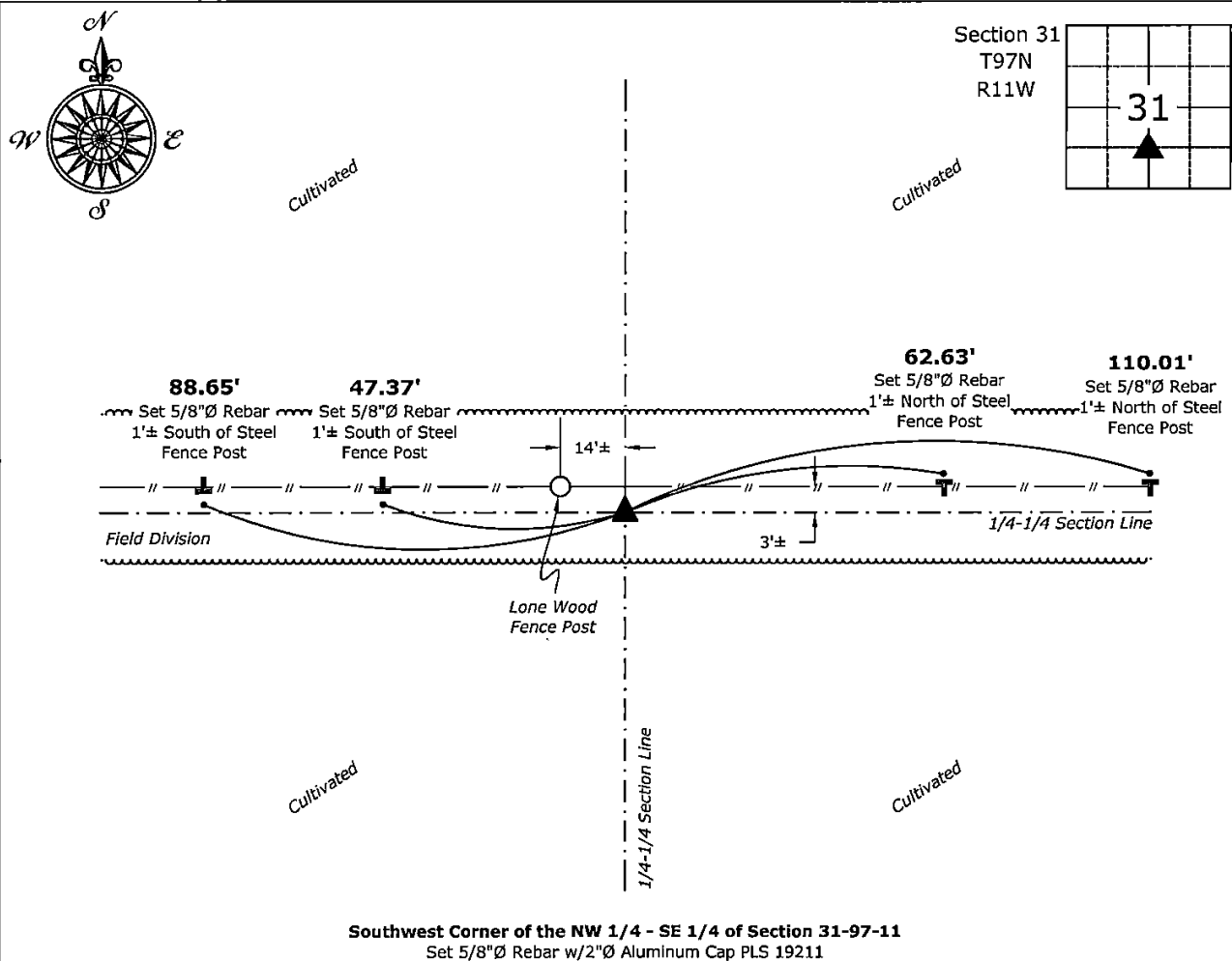
**Monument Description and Remarks:**

**Southwest Corner of the NW 1/4 - SE 1/4:**

Set 5/8"Ø Rebar w/2"Ø Aluminum Cap PLS 19211 equidistant and on line between the South 1/4 Corner and the Center of said Section.

### Plan View - Not to Scale

(Show a minimum of three reference ties to durable physical objects, relevant monuments and physical conditions that will enable recovery of the corner.)



**Southwest Corner of the NW 1/4 - SE 1/4 of Section 31-97-11**  
Set 5/8"Ø Rebar w/2"Ø Aluminum Cap PLS 19211



I hereby certify that this land surveying document was prepared and the related survey work was performed by me or under my direct personal supervision and that I am a duly licensed Land Surveyor under the laws of the State of Iowa.

Kent D. Pugh 5-5-2025

Kirk D. Reicks

Date:

License Number 19211

My license renewal date is December 31, 2026.

My license renewal date is December 31, 2020.  
 Sheets covered by this seal: Individual sheet only

## List Corner to be Indexed

Corner	Section	Township	Range
SW-NW-SE	31	97	11

Project Number: 2025-043

FB: Chickasaw 13. Page(s) 44-46