

Prepared by & Return to: Herold - Reicks Surveying, 18 East Main Street, New Hampton, IA 50658, Ph. 641-394-2725

UNITED STATES PUBLIC LAND SURVEY CORNER CERTIFICATE

Land Survey Monuments situated in Section 9, Township 96 North, Range 11 West of the Fifth Principal Meridian, Chickasaw County, Iowa. 1., 2.) Not previously recorded in the County Recorder's office.

This certificate is being prepared in compliance with Iowa Code Chapter 355.11 because:

- 1 & 2 ☒ There is no certificate on file for this corner.
☐ There are no longer three valid ties of record.
☐ There are changes to reference ties of record.
☐ There is change of monumentation of record.
☐ To clarify description of record monument (ties).

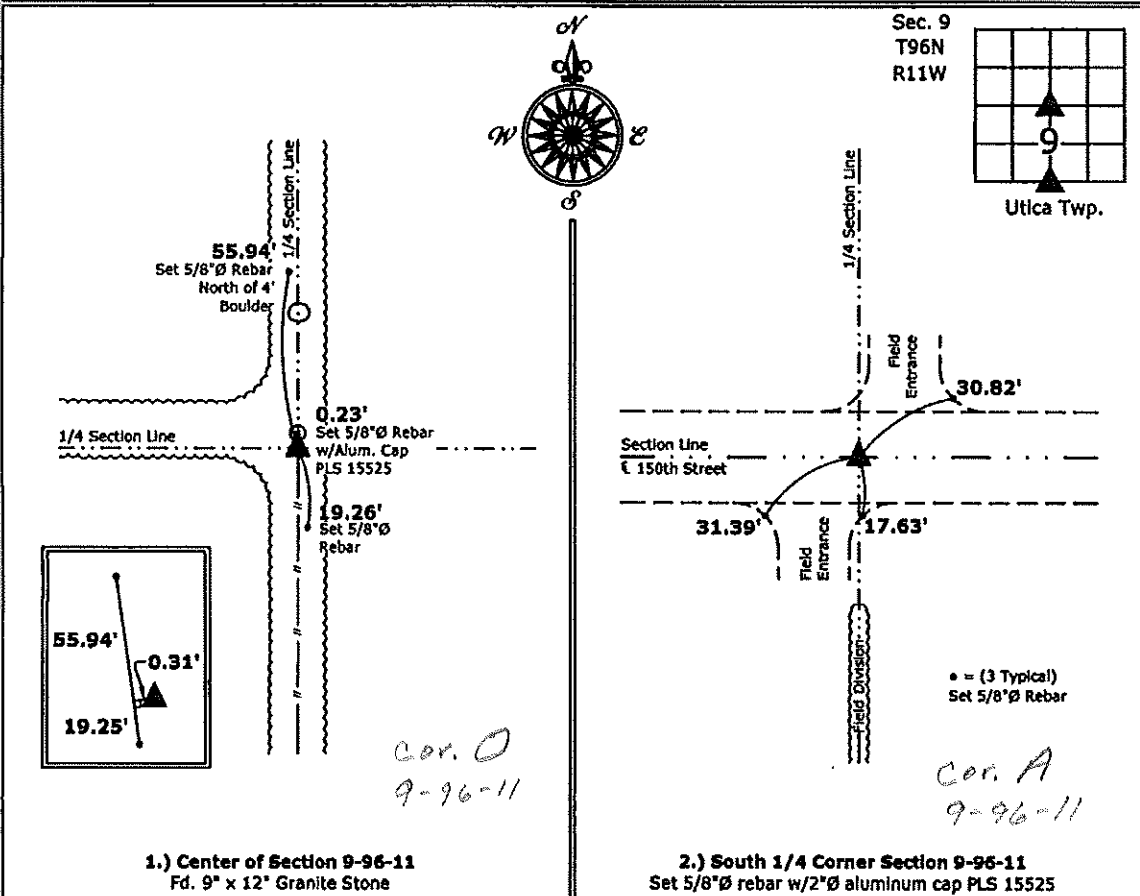
Monument Description and Remarks:

1.) Center: Fd. 9" x 12" Granite Stone from information obtained from the County Engineer's office. Set 5/8"Ø rebar w/2"Ø aluminum cap PLS 15525 0.23' North as an accessory to monument.

2.) South 1/4 Corner: Set 5/8"Ø rebar w/2"Ø aluminum cap PLS 15525 at the intersection of E 150th Street and a field division to the South.

PLAN - VIEW

(Show a minimum of three reference ties to durable physical objects, relevant monuments and physical conditions that will enable recovery of the corner.)



I hereby certify that this land surveying document was prepared and the related survey work was performed by me or under my direct personal supervision and that I am a duly licensed Land Surveyor under the laws of the State of Iowa.

Paul R. Herold 11-30-12
Paul R. Herold Date:

License number 15525
My license renewal date is December 31, 2012.
Sheets covered by this seal: Individual sheet only

List Corners to be Indexed

Corners	Section	Twp.	Range
CTR	9	96	11
S 1/4	9	96	11

Project Number: 2013-010

FB: Chickasaw County 5, Pgs. 1, 2