



Prepared by & Return to: Herold - Reicks Surveying, 10 East Main Street, New Hampton, IA 50659, Ph. 641-354-2725

## United States Public Land Survey Corner Certificate

Land Survey Monument situated in  
Section 9, Township 96 North, Range 11 West of the Fifth Principal Meridian, **Chickasaw** County, Iowa.  
On file in **Document #2012-2398** in the County Recorder's office.

This certificate is being prepared in compliance  
with Iowa Code Chapter 355.11 because:



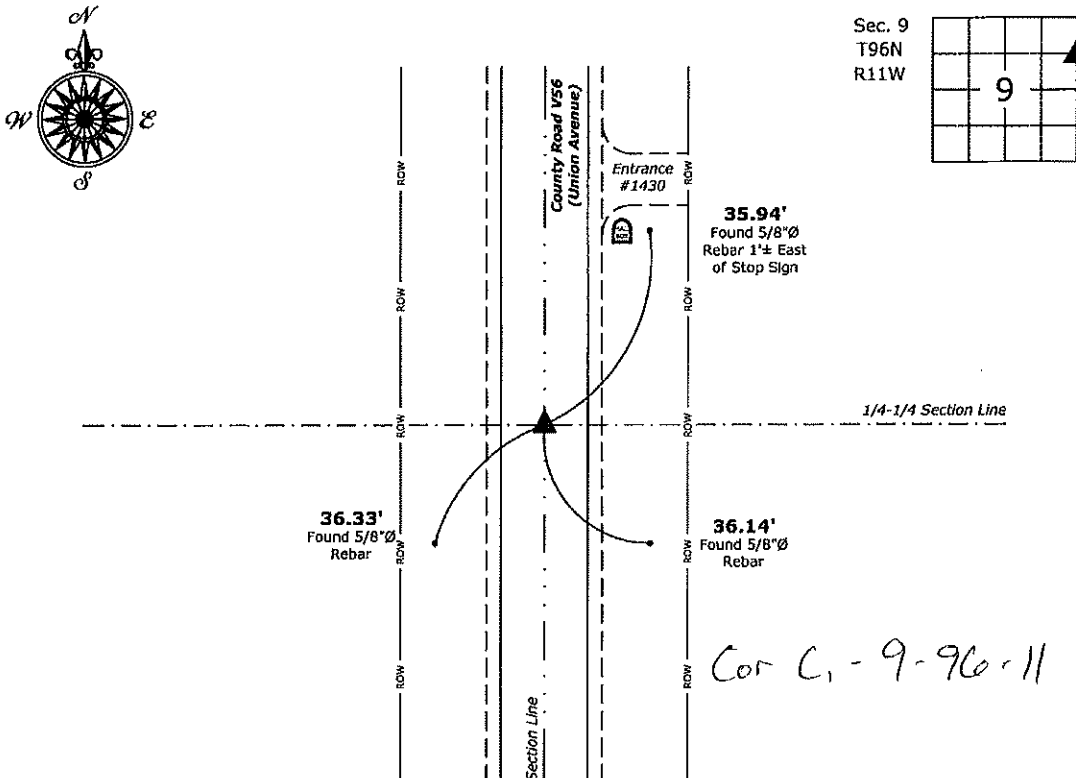
- ☐ There is no certificate on file for this corner.
- ☐ There are no longer three valid ties of record.
- ☐ There are changes to reference ties of record.
- ☒ There is change of monumentation of record.
- ☐ To clarify description of record monument (ties).

### Monument Description and Remarks:

**Southeast Corner NE 1/4-NE 1/4:** Set 1"Ø Bronze Survey Marker PLS 19211 at previous location (Found Survey Mark Nail with Stainless Steel Washer PLS 15525) with coordinates of the Corner obtained prior to highway reconstruction, Project No. FM-C019(89)--55-19.

### Plan View

(Show a minimum of three reference ties to durable physical objects, relevant monuments and physical conditions that will enable recovery of the corner.)



**Southeast Corner NE 1/4-NE 1/4 of Section 9-96-11**  
Set 1"Ø Bronze Survey Marker PLS 19211



I hereby certify that this land surveying document  
was prepared and the related survey work was  
performed by me or under my direct personal  
supervision and that I am a duly licensed Land  
Surveyor under the laws of the State of Iowa.

*Kirk D. Reicks* 6-17-20

Kirk D. Reicks Date:

License number 19211

My license renewal date is December 31, 2020.  
Sheets covered by this seal: Individual sheet only

### List Corner to be Indexed

Corner	Section	Twp.	Range
SE-NE-NE	9	96	11

Project Number: 2019-810

FB: 2019 Construction, Pgs. 14-36

File: S:\\_Projects - NHO\County Control Systems - NHO\CHICKASAW\CHICK-15-2020.dwg, 6/16/2020 11:11:31 AM

11/30/2012 @ 04:17 PM

SEC COR CERT

Book: Page: Total Fees: \$7.00

# Pages: 1

Prepared by & Return to: Herold - Reicks Surveying, 18 East Main Street, New Hampton, IA 50659, Ph. 515-394-2725

## UNITED STATES PUBLIC LAND SURVEY CORNER CERTIFICATE

Land Survey Monuments situated in Section 9, Township 96 North, Range 11 West of the Fifth Principal Meridian, Chickasaw County, Iowa. 1., 2.) Not previously recorded in the County Recorder's office.

This certificate is being prepared in compliance with Iowa Code Chapter 355.11 because:

- 1 & 2 ☒ There is no certificate on file for this corner.  
☐ There are no longer three valid ties of record.  
☐ There are changes to reference ties of record.  
☐ There is change of monumentation of record.  
☐ To clarify description of record monument (ties).

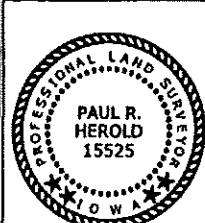
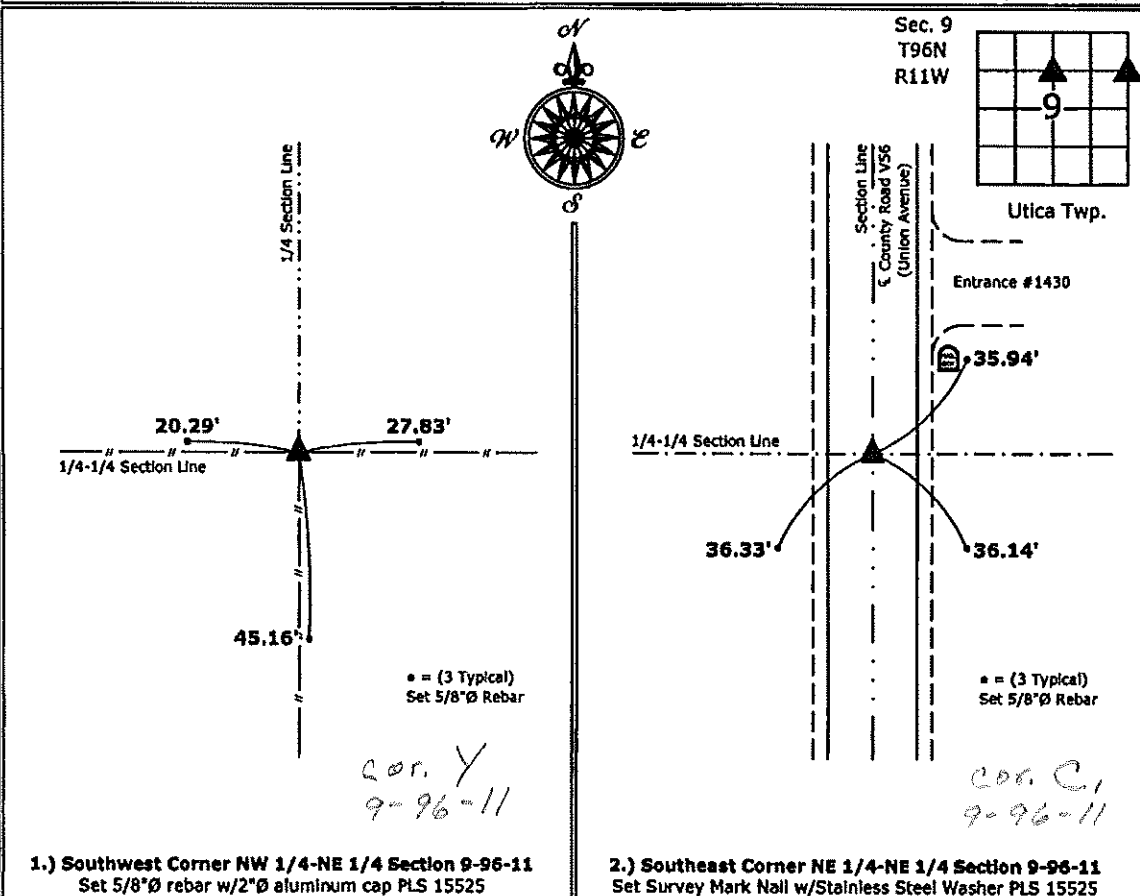
Monument Description and Remarks:

1.) Southwest Corner NW 1/4-NE 1/4: Set 5/8"Ø rebar w/2"Ø aluminum cap PLS 15525 equidistant and online between the North 1/4 Corner and Center of Section 9.

2.) Southeast Corner NE 1/4-NE 1/4: Set Survey Mark Nail w/Stainless Steel Washer PLS 15525 equidistant and online between the Northeast and East 1/4 Corners of Section 9.

### PLAN - VIEW

(Show a minimum of three reference ties to durable physical objects, relevant monuments and physical conditions that will enable recovery of the corner.)



I hereby certify that this land surveying document was prepared and the related survey work was performed by me or under my direct personal supervision and that I am a duly licensed Land Surveyor under the laws of the State of Iowa.

Paul R. Herold Date: 11-30-12

License number 15525

My license renewal date is December 31, 2012.  
Sheets covered by this seal: Individual sheet only

#### List Corners to be Indexed

Corners	Section	Twp.	Range
SW-NW-NE	9	96	11
SE-NE-NE	9	96	11

Project Number: 2013-010

FB: Chickasaw County S, Pgs. 1, 2