

Chickasaw Co. Recorder  
Cindy Messersmith  
Fee Book 2008-0649  
04/10/2008 @ 11:59AM  
SCC SEC COR CERT  
Book: Page: # Pages: 1  
Total Fees: \$7.00

Herold - Reicks Surveying, 25 1/2 East Main Street, Suite 204, New Hampton, IA 50659, Ph. 641-394-2725

## UNITED STATES PUBLIC LAND SURVEY CORNER CERTIFICATE

Land Survey Monuments situated in:

Section 8, Township 96 North, Range 11 West of the Fifth Principal Meridian,  
Chickasaw County, Iowa. Previously recorded in None  
in County Recorder's Office. (book, page, document number, etc.)

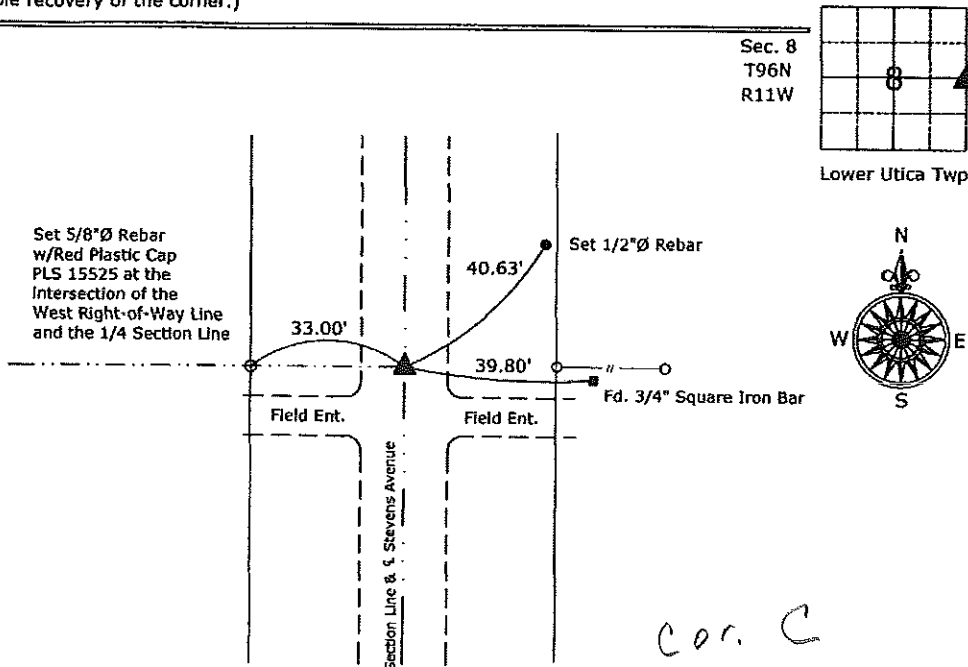
(Show reason for preparing this certificate, the evidence and detailed procedures used in establishing the corner positions and monumentation found or placed.)

Monument Description and Remarks:

E 1/4 Corner Section 8-96-11: Fd. 5/8"Ø rebar w/yellow plastic cap LS 7549 from information obtained from the County Engineer's Office, in Field Book "Lower Utica Corner Ties", Section 8, Corner "C", only one of the County ties remain, added two new ties to update the corner.

### PLAN - VIEW

(Show a minimum of three reference ties to durable physical objects, relevant monuments and physical conditions that will enable recovery of the corner.)



E 1/4 Corner Section 8-96-11  
Fd. 5/8"Ø Rebar w/Yellow Plastic Cap LS 7549



I hereby certify that this land surveying document was prepared and the related survey work was performed by me or under my direct personal supervision and that I am a duly licensed Land Surveyor under the laws of the State of Iowa.

Paul R. Herold 4-10-08  
Paul R. Herold Date:

License number 15525  
My license renewal date is December 31, 2008.  
Sheets covered by this seal: Individual sheet only

List Corners to be Indexed			
Corners	Section	Twp.	Range
E 1/4	8	96	11

Project Number: 2008-025

FB: Chickasaw County I, Pg. 64

File: S:\Projects\2008-025\dwg\2008-025.dwg, 4/10/2008 9:25:46 AM