

Section 5-96-11
As referred to in
Engr. The Book

Chickasaw Co. Recorder
Cindy Messersmith
Fee Book 2008-2072

10/29/2008 @1100AM
SCC SEC COR CERT
Book: Page: # Pages: 1
Total Fees: \$7.00

Herold - Reicks Surveying, 25 1/2 East Main Street, Suite 204, New Hampton, IA 50659, Ph. 641-394-2725

UNITED STATES PUBLIC LAND SURVEY CORNER CERTIFICATE

Land Survey Monuments situated in Section **8**; Township **96** North, Range **11** West of the Fifth Principal Meridian, **Chickasaw** County, Iowa. Not previously recorded in **Chickasaw** County Recorder's office.

This certificate is being prepared in compliance with Iowa Code Chapter 355.11 because:

- 1., 2. ☒ There is no certificate on file for this corner.
☐ There are no longer three valid ties of record.
☐ There are changes to reference ties of record.
☐ There is change of monumentation of record.
☐ To clarify description of record monument (ties).

Monument Description and Remarks:

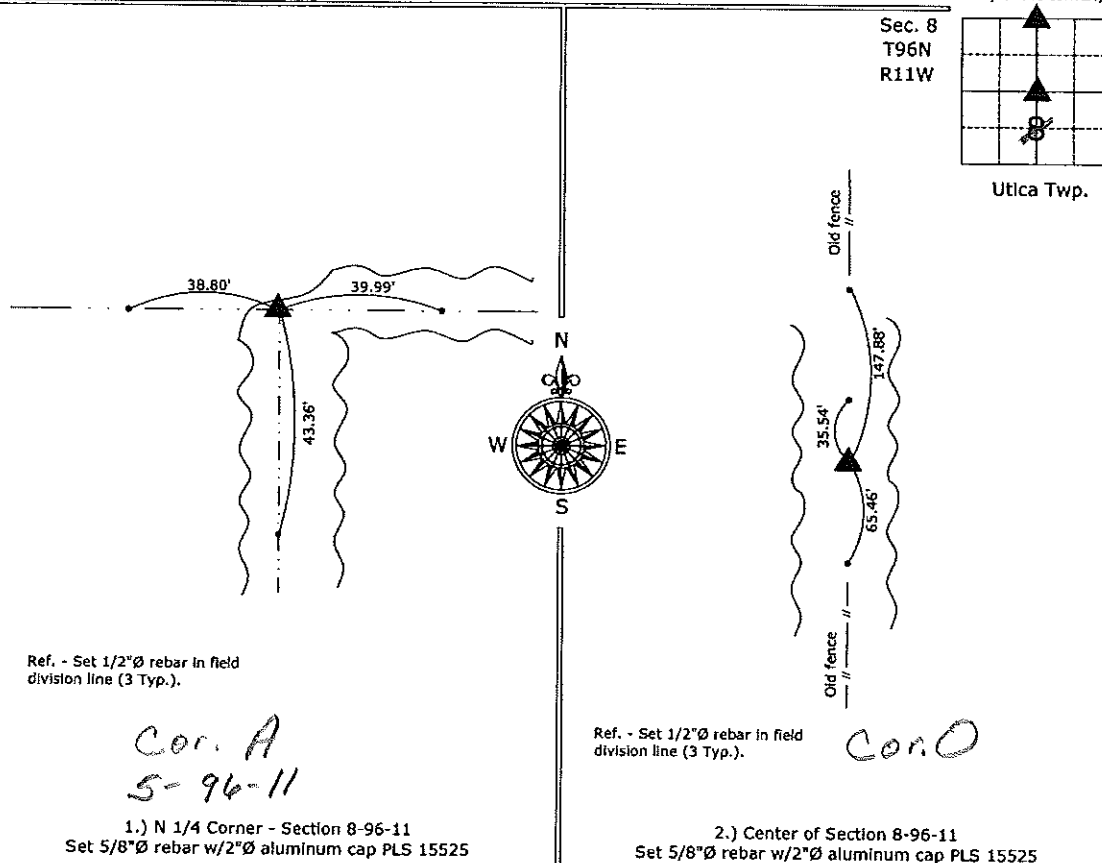
The County Engineer's office shows no perpetuation of these corners.

1.) N 1/4 Corner - Set 5/8"Ø rebar with 2" aluminum cap 15525 at the intersection of existing lines of occupation after comparing distances from the South and East.

2.) Center of Section - Set 5/8"Ø rebar with 2" aluminum cap 15525 at the intersection of 1/4 Section lines.

PLAN - VIEW

(Show a minimum of three reference ties to durable physical objects, relevant monuments and physical conditions that will enable recovery of the corner.)



I hereby certify that this land surveying document was prepared and the related survey work was performed by me or under my direct personal supervision and that I am a duly licensed Land Surveyor under the laws of the State of Iowa.

Paul R. Herold 10-29-08
Paul R. Herold Date:

License number 15525

My license renewal date is December 31, 2008.
Sheets covered by this seal: Individual sheet only

List Corners to be Indexed

Corners	Section	Twp.	Range
N 1/4	8	96	11
Center	8	96	11

Project Number: 2008-106

FB: Chickasaw County 3, Pgs. 9-10

File: S:\Projects\2008-106\dwg\2008-106.dwg, 10/29/2008 09:11:49