

Chickasaw Co. Recorder  
Cindy Messersmith  
Fee Book 2016-1665  
12/07/2016 @12:08PM  
SEC COR CERT  
Book: Page: # Pages: 1  
Total Fees: \$7.00

Prepared by & Return to: Harold - Reicks Surveying, 10 East Main Street, New Hampton, IA 50659, Ph. 515-384-2725

## United States Public Land Survey Corner Certificate

Land Survey Monument situated in  
Section 7, Township 96 North, Range 11 West of the Fifth Principal Meridian, Chickasaw County, Iowa.  
Not on file in the County Recorder's office.

This certificate is being prepared in compliance  
with Iowa Code Chapter 355.11 because:

- ☒ There is no certificate on file for this corner.  
☐ There are no longer three valid ties of record.  
☐ There are changes to reference ties of record.  
☐ There is change of monumentation of record.  
☐ To clarify description of record monument (ties).

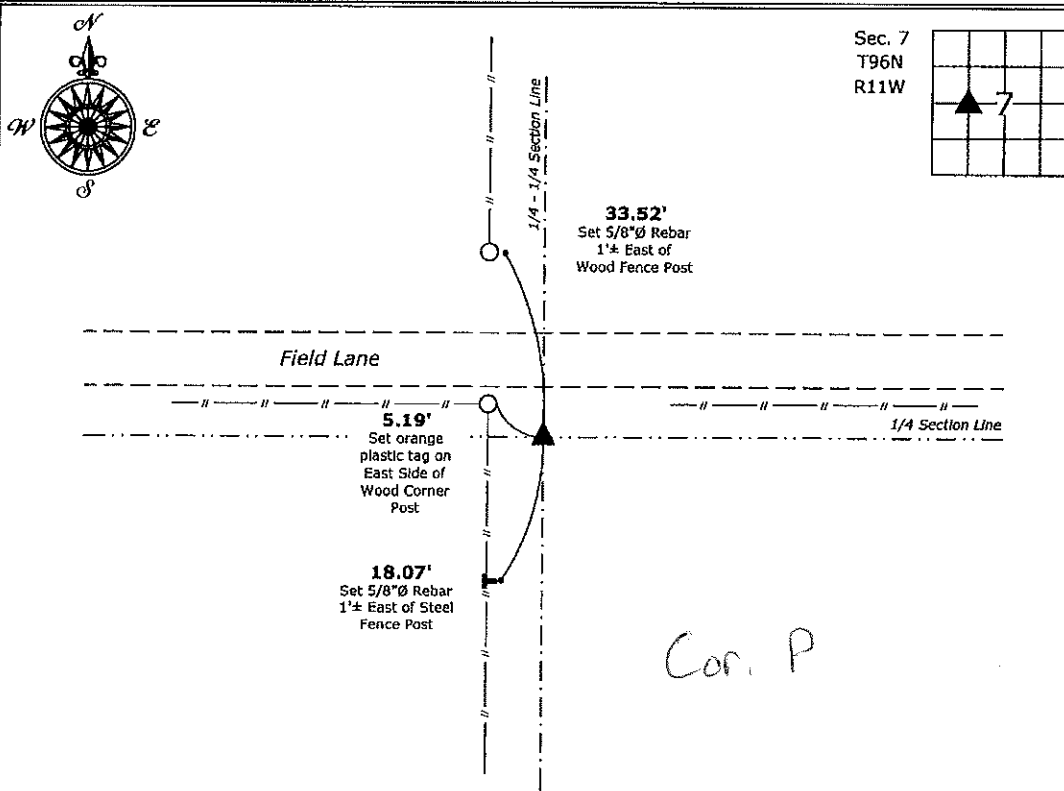
### Monument Description and Remarks:

**Southeast Corner Fr'l SW 1/4 - Fr'l NW 1/4:** Set 5/8"Ø rebar w/2"Ø aluminum cap PLS 19211 on line between the Center and West 1/4 Corners of said Section by single proportionate methods.

An extensive search of all of the records within the County offices was performed as part of the section corner recovery, No records were located of the perpetuation of a monument at this corner.

### Plan View

(Show a minimum of three reference ties to durable physical objects, relevant monuments and physical conditions that will enable recovery of the corner.)



**Southeast Corner Fr'l SW 1/4 - Fr'l NW 1/4 of Section 7-96-11**  
Set 5/8"Ø rebar w/2"Ø aluminum cap PLS 19211



I hereby certify that this land surveying document  
was prepared and the related survey work was  
performed by me or under my direct personal  
supervision and that I am a duly licensed Land  
Surveyor under the laws of the State of Iowa.

*Kirk D. Reicks* 12-7-16  
Kirk D. Reicks Date:

License number 19211  
My license renewal date is December 31, 2016.  
Sheets covered by this seal: Individual sheet only

### List Corner to be Indexed

Corner	Section	Twp.	Range
SE-SW-NW	7	96	11

Project Number: 2016-059

FB: Chickasaw Co. 8, Pgs. 15-16

File: S:\C3D Projects\County Control Systems\CHICKASAW\CHICK-15\CHICK-15.dwg, 12/7/2016 11:18:59 AM