

Prepared by & Return to: Kirk D. Reicks, HRS, LLC, 10 East Main Street, New Hampton, IA 50659, Phone 641-394-2725

United States Public Land Survey Corner Certificate

Land Survey Monument situated in  
Section 4, Township 96 North, Range 11 West of the Fifth Principal Meridian, Chickasaw County, Iowa.  
On file in Document #2003-0284 in the County Recorder's Office.

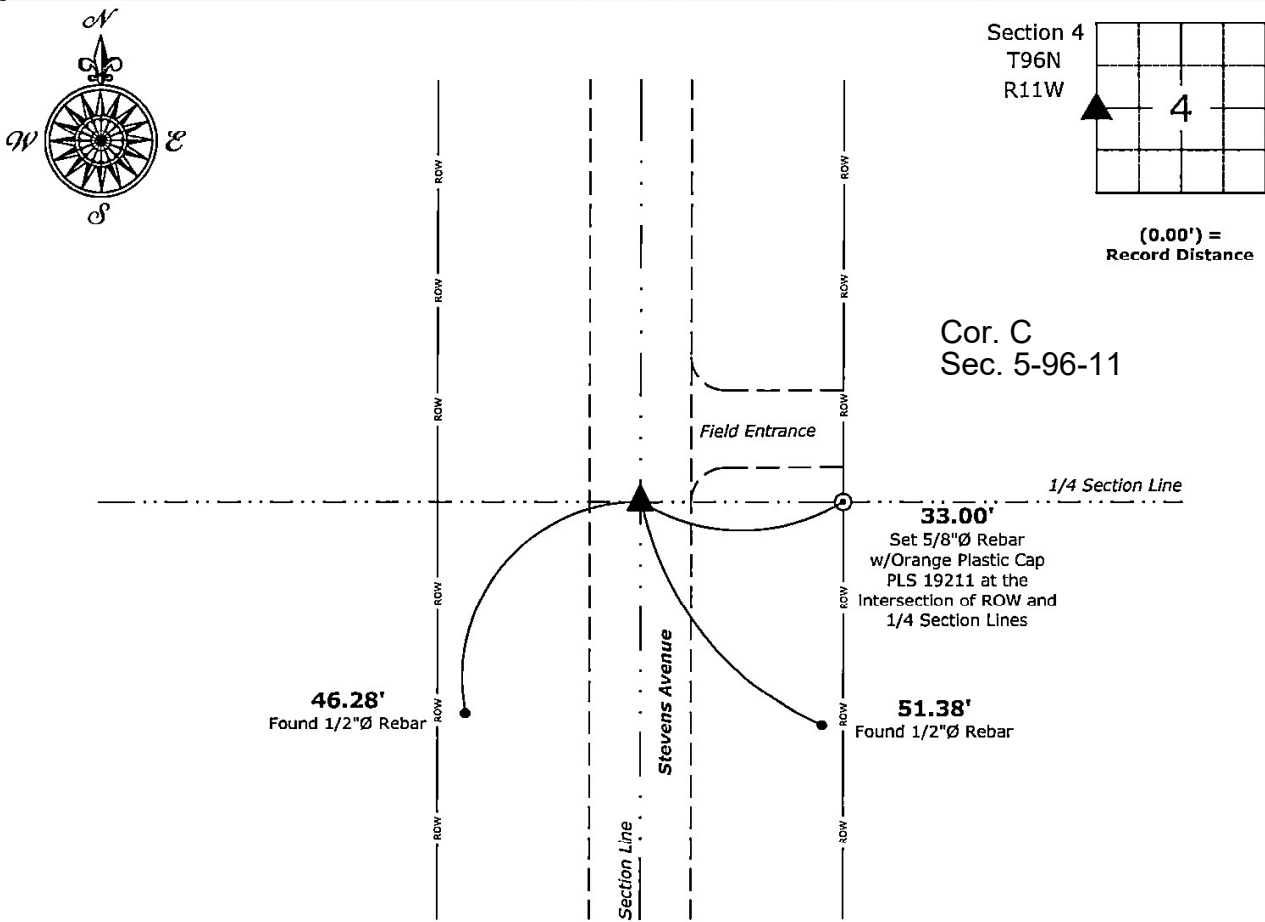
This certificate is being prepared in compliance with Iowa Code Chapter 355.11 because:   
☐ There is no certificate on file for this corner.  
☒ There are no longer three valid ties of record.  
☐ There are changes to reference ties of record.  
☒ There is change of monumentation of record.  
☐ To clarify description of record monument (ties).

Monument Description and Remarks:

**West Quarter Corner:** Set 5/8"Ø Rebar w/2"Ø Aluminum Cap PLS 19211 with information obtained from the previously recorded Section Corner Certificate. Searched for the previous monument, but did not locate it as it appears to have been graded out.

Plan View - Not to Scale

(Show a minimum of three reference ties to durable physical objects, relevant monuments and physical conditions that will enable recovery of the corner.)



**West 1/4 Corner of Section 4-96-11**  
Set 5/8"Ø Rebar w/2"Ø Aluminum Cap PLS 19211



I hereby certify that this land surveying document was prepared and the related survey work was performed by me or under my direct personal supervision and that I am a duly licensed Land Surveyor under the laws of the State of Iowa.  
*Kirk D. Reicks* 11-16-2023  
Kirk D. Reicks Date:  
License number 19211  
My license renewal date is December 31, 2024.  
Sheets covered by this seal: Individual sheet only

List Corner to be Indexed			
Corner	Section	Township	Range
W 1/4	4	96	11
Project Number: 2023-075			
FB: Chickasaw 12, Page(s) 36-37			