



Prepared by & Return to: Harold - Reicks Surveying, 10 East Main Street, New Hampton, IA 50659, Ph. 641-354-2725

United States Public Land Survey Corner Certificate

Land Survey Monument situated in
Section 4, Township 96 North, Range 11 West of the Fifth Principal Meridian, **Chickasaw County, Iowa.**
On file in **Document #2003-0287** in the County Recorder's office.

This certificate is being prepared in compliance
with Iowa Code Chapter 355.11 because:



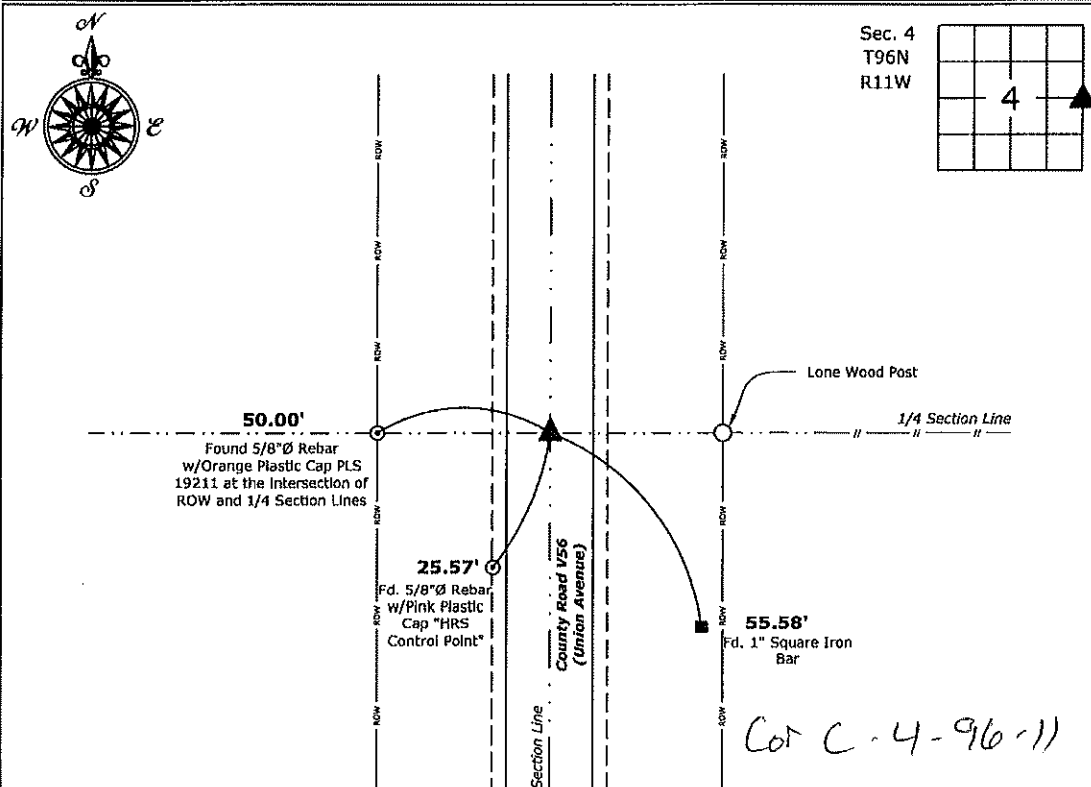
- ☐ There is no certificate on file for this corner.
- ☐ There are no longer three valid ties of record.
- ☐ There are changes to reference ties of record.
- ☒ There is change of monumentation of record.
- ☐ To clarify description of record monument (ties).

Monument Description and Remarks:

East 1/4 Corner: Set 1"Ø Bronze Survey Marker PLS 19211 at previous location (Found PK Nail) with
coordinates of the Corner obtained prior to highway reconstruction, Project No. FM-C019(89)--55-19.

Plan View

(Show a minimum of three reference ties to durable physical objects, relevant monuments and physical conditions that will enable recovery of the corner.)



East 1/4 Corner of Section 4-96-11
Set 1"Ø Bronze Survey Marker PLS 19211



I hereby certify that this land surveying document
was prepared and the related survey work was
performed by me or under my direct personal
supervision and that I am a duly licensed Land
Surveyor under the laws of the State of Iowa.

Kirk D. Reicks 6-17-20
Kirk D. Reicks Date:

License number 19211

My license renewal date is December 31, 2020.
Sheets covered by this seal: Individual sheet only

List Corner to be Indexed

Corner	Section	Twp.	Range
E 1/4	4	96	11

Project Number: 2019-810

FB: 2019 Construction, Pgs. 14-36

03 JAN 27 AM 9 20

CINDY MESSEKSMITH
COUNTY RECORDER

TeKIPPE ENGINEERING, P.C., 128 South Vine Street, West Union, Iowa 52176 Phone (563) 422-5131

UNITED STATES PUBLIC LAND SURVEY CORNER CERTIFICATE

OF
Land Survey Monuments situated in Section 4, Township 96 North, Range
11 West of the Fifth Principal Meridian, CHICKASAW County, Iowa.
Previously recorded in none in County Recorder's Office.
(book, page, document number, etc.)

(Show reason for preparing this certificate, the evidence and detailed procedures used in establishing the corner positions and monumentation found or placed.)

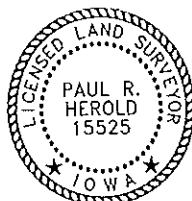
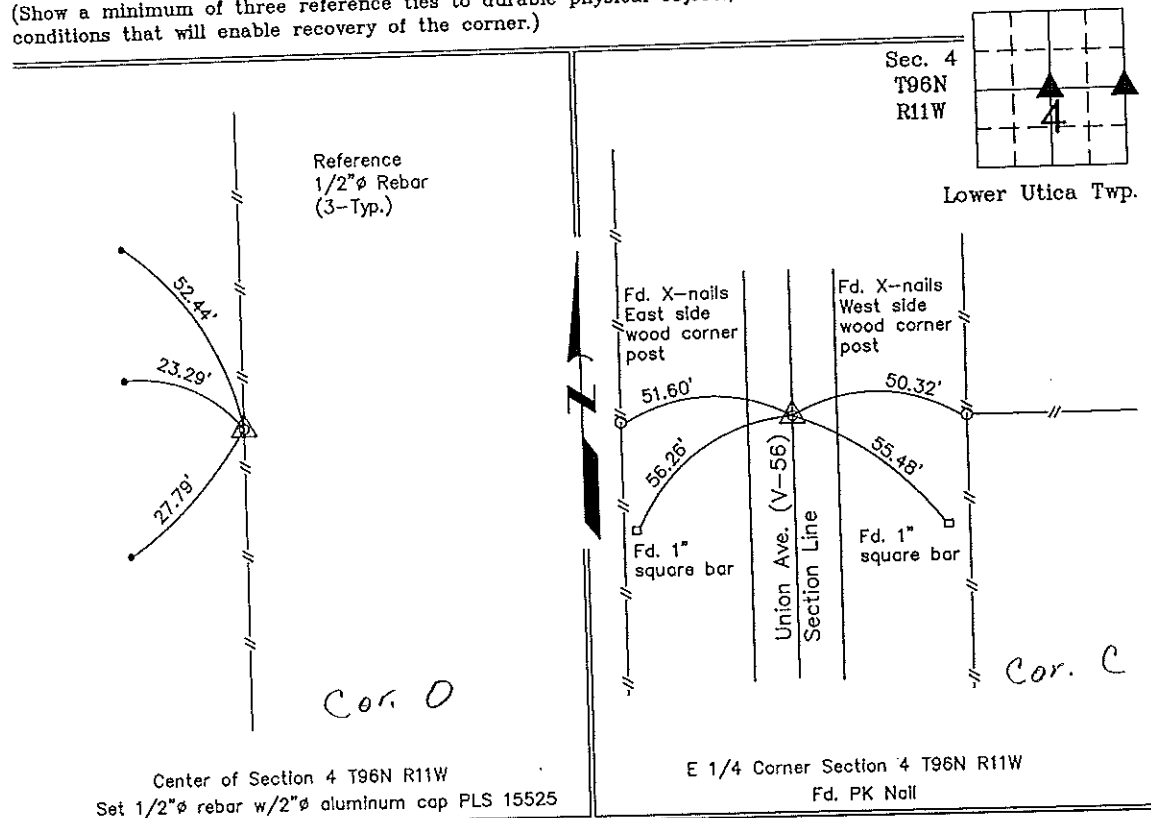
Monument Description and Remarks: Center of Section 4 T96N R11W: Set 1/2"Ø rebar w/2"Ø aluminum cap PLS 15525 at the intersection of 1/4 section lines.

E 1/4 Corner Section 4 T96N R11W: Fd. PK Nail from County ties in Field Book "Lower Utica Twp." Section 4 Corner "C".

PLAN - VIEW

Project Number 02267.LS
FB. 46J PG. 48-52

(Show a minimum of three reference ties to durable physical objects, relevant monuments and physical conditions that will enable recovery of the corner.)



I hereby certify that this land surveying document was prepared and the related survey work was performed by me or under my direct personal supervision and that I am a duly licensed Land Surveyor under the laws of the State of Iowa.

Paul R. Herold 1-23-03
Paul R. Herold Date
License number 15525
My license renewal date is December 31, 2004.
Sheets covered by this seal: Individual

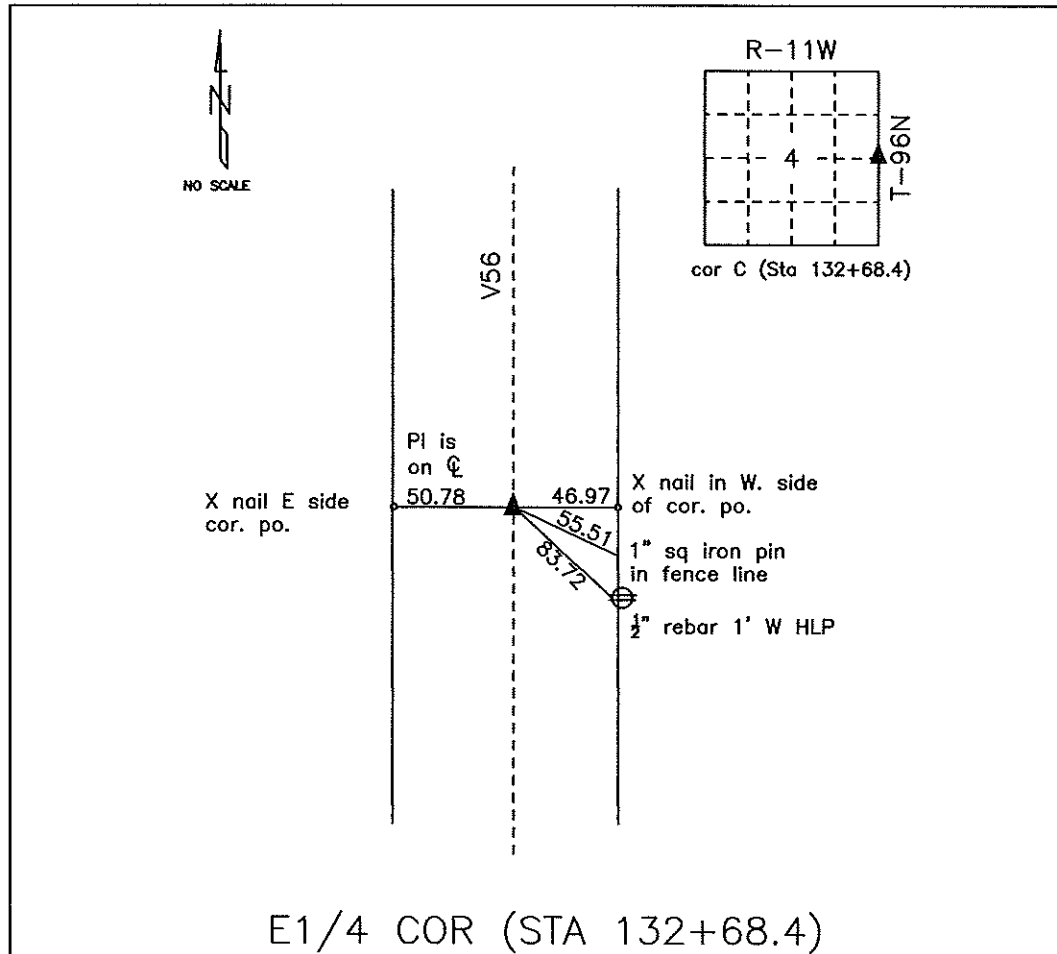
List Corners to be Indexed			
Corners	Section	Twp.	Range
Center	4	96N	11W
E 1/4	4	96N	11W

Filed 2-13-03
X:\Section Corners\Sec. 04V-96-11mo.dwg

County Engineer
Copy

COUNTY ENGINEER'S SECTION CORNER PRESERVATION RECORD

LAND SURVEY MONUMENT LOCATED IN SECTION 4, TOWNSHIP 96 N
NORTH, RANGE 11 W, OF THE 5TH P.M. Chickasaw COUNTY, IOWA
PREVIOUSLY RECORDED Bk 2003 - Pg 0287



MONUMENT DESCRIPTION AND NARRATIVE Found PK nail in HMA mat

From Chickasaw County Project plans SN-188(9) found PI on center line. Information was also found in the
county engineer tie book.

All ties are GPS surveyed.

I AM NOT A REGISTERED LAND SURVEYOR UNDER THE LAWS OF THE STATE OF IOWA

JIM FOSTER CHICKASAW CO. DATE: 08/02/10