

FILED 2003-0285

RECORDER'S OFFICE
CHICKASAW COUNTY, IOWA

'03 JAN 27 AM 9 19

CINDY MESSERSMITH
COUNTY RECORDER

TEKIPPE ENGINEERING, P.C., 128 South Vine Street, West Union, Iowa 52175 Phone (563) 422-5131

UNITED STATES PUBLIC LAND SURVEY CORNER CERTIFICATE

OF

Land Survey Monuments situated in Section 4, Township 96 North, Range 11 West of the Fifth Principal Meridian, CHICKASAW County, Iowa.
Previously recorded in none in County Recorder's Office.
(book, page, document number, etc.)

(Show reason for preparing this certificate, the evidence and detailed procedures used in establishing the corner positions and monumentation found or placed.)

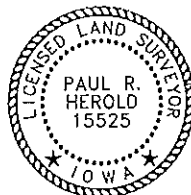
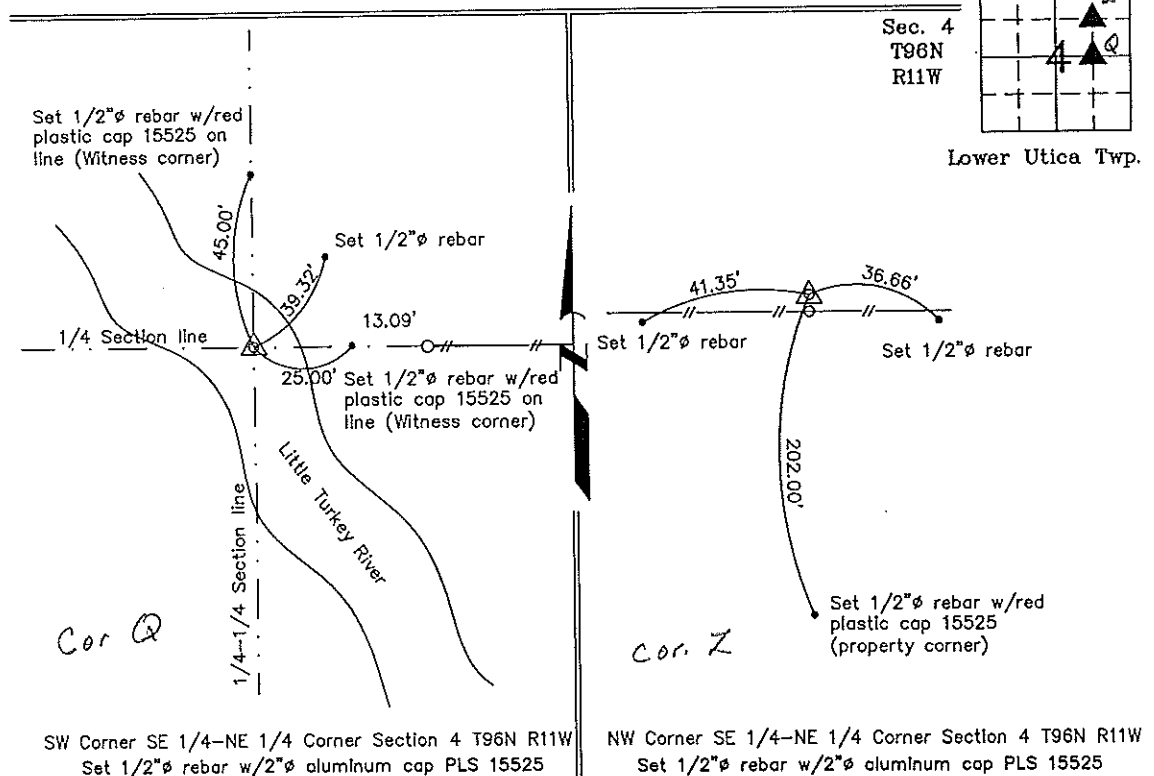
Monument Description and Remarks: Southwest Corner of the Southeast Quarter of the Northeast Quarter Section 4 T96N R11W: Corner position calculated equidistant and on line between the Center and E 1/4 corners. Corner falls in river. Set witness corners 45.00' North on line and 25.00' East on line. (See below)

Northwest Corner of the Southeast Quarter of the Northeast Quarter Section 4 T96N R11W: Set 1/2"Ø rebar w/2"Ø aluminum cap PLS 15525 at the intersection of the Quarter-Quarter Section lines.

PLAN - VIEW

Project Number 02267.LS
FB. 46J PG. 48-52

(Show a minimum of three reference ties to durable physical objects, relevant monuments and physical conditions that will enable recovery of the corner.)



I hereby certify that this land surveying document was prepared and the related survey work was performed by me or under my direct personal supervision and that I am a duly licensed Land Surveyor under the laws of the State of Iowa.

Paul R. Herold 1-23-03
Paul R. Herold Date
License number 15525
My license renewal date is December 31, 2004.
Sheets covered by this seal: Individual

List Corners to be Indexed

Corners	Section	Twp.	Range
SW-SE-NE	4	96N	11W
NW-SE-NE	4	96N	11W

Filed 2-13-03

X:\Section Corners\Sec. 04\4-96-11n.dwg

County Engineer
Cindy Messersmith