

Section 5-96-11
As referred to in
Eng. The Book

Chickasaw Co. Recorder
Cindy Messersmith
Fee Book 2008-2071
10/29/2008 @1055AM
SCC SEC COR CERT
Book: Page: # Pages: 1
Total Fees: \$7.00

Herold - Recks Surveying, 25 1/2 East Main Street, Suite 204, New Hampton, IA 50659, Ph. 641-394-2725

UNITED STATES PUBLIC LAND SURVEY CORNER CERTIFICATE

Land Survey Monuments situated in Section 8, Township 96 North, Range 11 West of the Fifth Principal Meridian, Chickasaw County, Iowa. Not previously recorded in Chickasaw County Recorder's office.

This certificate is being prepared in compliance with Iowa Code Chapter 355.11 because:

- 1,2. ☒ There is no certificate on file for this corner.
☐ There are no longer three valid ties of record.
☐ There are changes to reference ties of record.
☐ There is change of monumentation of record.
☐ To clarify description of record monument (ties).

Monument Description and Remarks:

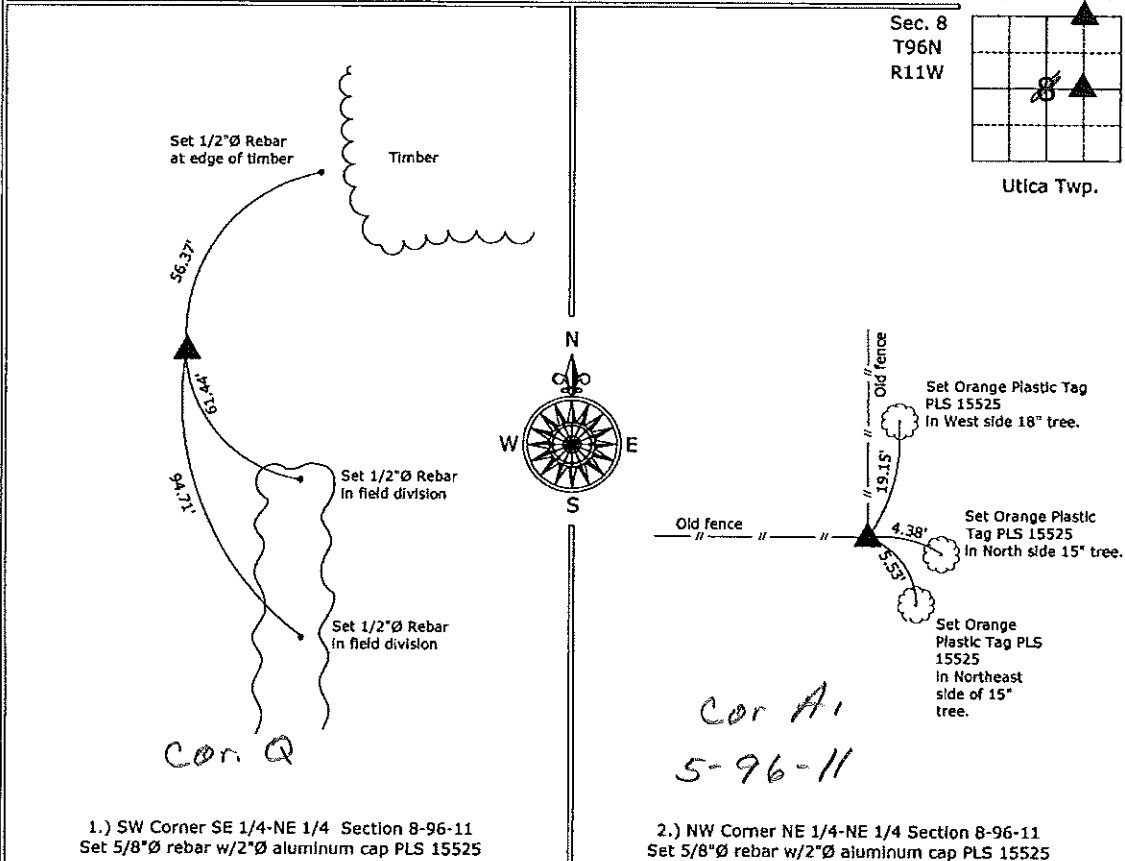
The County Engineer's office shows no perpetuation of these corners.

1.) SW Corner SE 1/4-NE 1/4: Set 5/8"Ø rebar with 2" aluminum cap 15525 midway and on line between Center of Section and East 1/4 corner.

2.) NW Corner NE 1/4-NE 1/4: Set 5/8"Ø rebar with 2" aluminum cap 15525 midway and on line between the North 1/4 corner and NE corner of Section.

PLAN - VIEW

(Show a minimum of three reference ties to durable physical objects, relevant monuments and physical conditions that will enable recovery of the corner.)



I hereby certify that this land surveying document was prepared and the related survey work was performed by me or under my direct personal supervision and that I am a duly licensed Land Surveyor under the laws of the State of Iowa.

Paul R. Herold 10-29-08

Paul R. Herold Date:

License number 15525

My license renewal date is December 31, 2008.
Sheets covered by this seal: Individual sheet only

List Corners to be Indexed

Corners	Section	Twp.	Range
SW-SE-NE	8	96	11
NW-NE-NE	8	96	11

Project Number: 2008-106

FB: Chickasaw County 3, Pgs. 9 and 10

File: S:\Projects\2008\2008-106.dwg\2008-106.dwg, 10/29/2008 09:12:09