

03 JAN 27 AM 9 20

CINDY MESSEKSMITH  
COUNTY RECORDER

TeKIPPE ENGINEERING, P.C., 128 South Vine Street, West Union, Iowa 52176 Phone (563) 422-5131

# UNITED STATES PUBLIC LAND SURVEY CORNER CERTIFICATE

OF  
Land Survey Monuments situated in Section 4, Township 96 North, Range  
11 West of the Fifth Principal Meridian, CHICKASAW County, Iowa.  
Previously recorded in none in County Recorder's Office.  
(book, page, document number, etc.)

(Show reason for preparing this certificate, the evidence and detailed procedures used in establishing the corner positions and monumentation found or placed.)

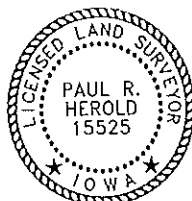
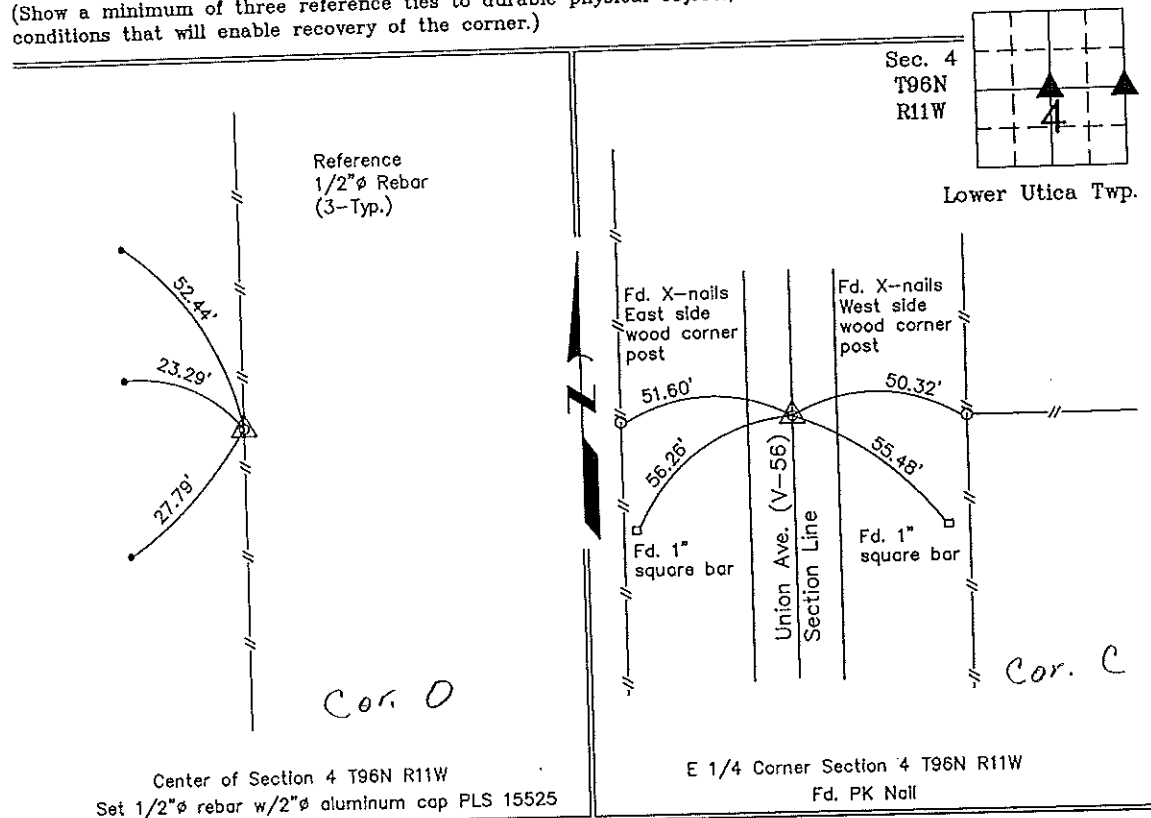
Monument Description and Remarks: Center of Section 4 T96N R11W: Set 1/2"Ø rebar w/2"Ø aluminum cap PLS 15525 at the intersection of 1/4 section lines.

E 1/4 Corner Section 4 T96N R11W: Fd. PK Nail from County ties in Field Book "Lower Utica Twp." Section 4 Corner "C".

## PLAN - VIEW

Project Number 02267.LS  
FB. 46J PG. 48-52

(Show a minimum of three reference ties to durable physical objects, relevant monuments and physical conditions that will enable recovery of the corner.)



I hereby certify that this land surveying document was prepared and the related survey work was performed by me or under my direct personal supervision and that I am a duly licensed Land Surveyor under the laws of the State of Iowa.

Paul R. Herold 1-23-03  
Paul R. Herold Date  
License number 15525  
My license renewal date is December 31, 2004.  
Sheets covered by this seal: Individual

List Corners to be Indexed			
Corners	Section	Twp.	Range
Center	4	96N	11W
E 1/4	4	96N	11W

Filed 2-13-03  
X:\Section Corners\Sec. 04V-96-11mo.dwg

County Engineer  
Cindy Messersmith