



Prepared by & Return to: Herold - Reicks Surveying, 10 East Main Street, New Hampton, IA 50659, Ph. 641-354-2725

United States Public Land Survey Corner Certificate

Land Survey Monument situated in
 Section 4, Township 96 North, Range 11 West of the Fifth Principal Meridian, **Chickasaw** County, Iowa.
 On file in **Document #2003-0286** in the County Recorder's office.

This certificate is being prepared in compliance with Iowa Code Chapter 355.11 because:

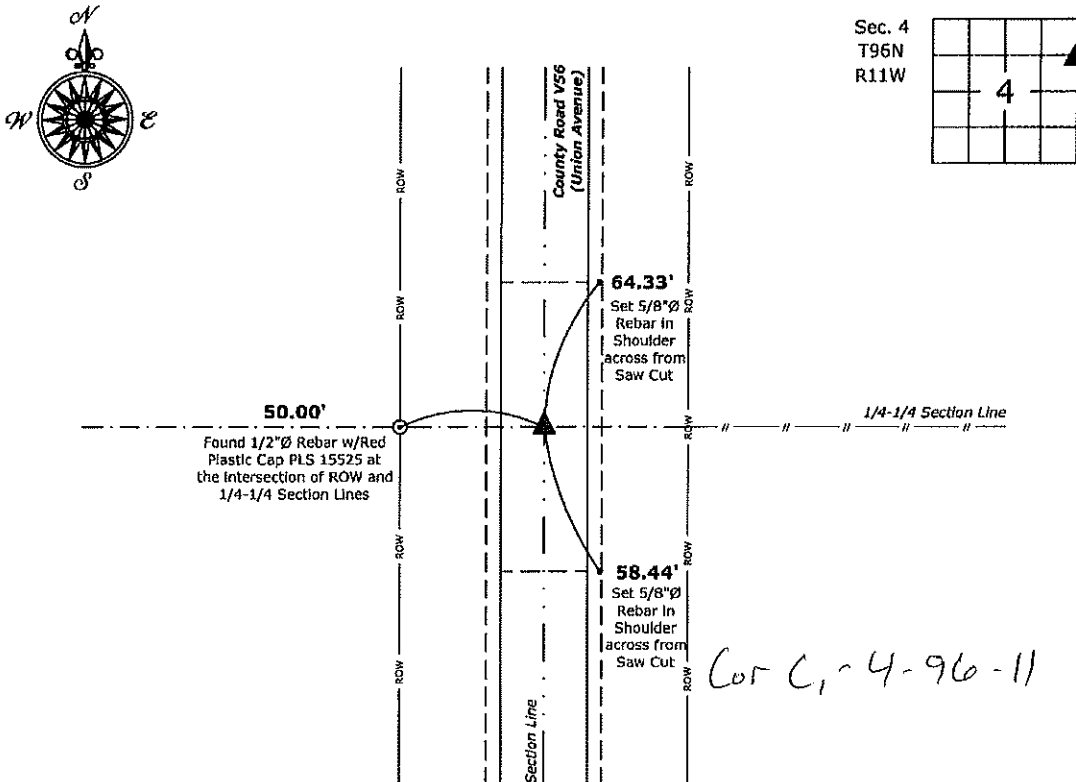
- ☐ There is no certificate on file for this corner.
☐ There are no longer three valid ties of record.
☐ There are changes to reference ties of record.
☒ There is change of monumentation of record.
☐ To clarify description of record monument (ties).

Monument Description and Remarks:

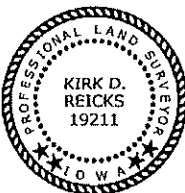
Northeast Corner SE 1/4-NE 1/4: Set 1"Ø Bronze Survey Marker PLS 19211 at previous location (Found MAG Nail with Stainless Steel Washer PLS 15525) with coordinates of the Corner obtained prior to highway reconstruction, Project No. FM-C019(89)--55-19.

Plan View

(Show a minimum of three reference ties to durable physical objects, relevant monuments and physical conditions that will enable recovery of the corner.)



Northeast Corner SE 1/4-NE 1/4 of Section 4-96-11
 Set 1"Ø Bronze Survey Marker PLS 19211



I hereby certify that this land surveying document was prepared and the related survey work was performed by me or under my direct personal supervision and that I am a duly licensed Land Surveyor under the laws of the State of Iowa.

Kirk D. Reicks 6-17-20
 Kirk D. Reicks Date:

License number 19211
 My license renewal date is December 31, 2020.
 Sheets covered by this seal: Individual sheet only

List Corner to be Indexed

Corner	Section	Twp.	Range
NE-SE-NE	4	96	11

Project Number: 2019-810

FB: 2019 Construction, Pgs. 14-36

'03 JAN 27 AM 9 20

CINDY MESSELSMITH
COUNTY RECORDER

TEKIPPE ENGINEERING, P.C., 128 South Vine Street, West Union, Iowa 52175 Phone (563) 422-5131

UNITED STATES PUBLIC LAND SURVEY CORNER CERTIFICATE

OF

Land Survey Monuments situated in Section 4, Township 96 North, Range
11 West of the Fifth Principal Meridian, CHICKASAW County, Iowa.
Previously recorded in none in County Recorder's Office.
(book, page, document number, etc.)

(Show reason for preparing this certificate, the evidence and detailed procedures used in establishing the corner positions and monumentation found or placed.)

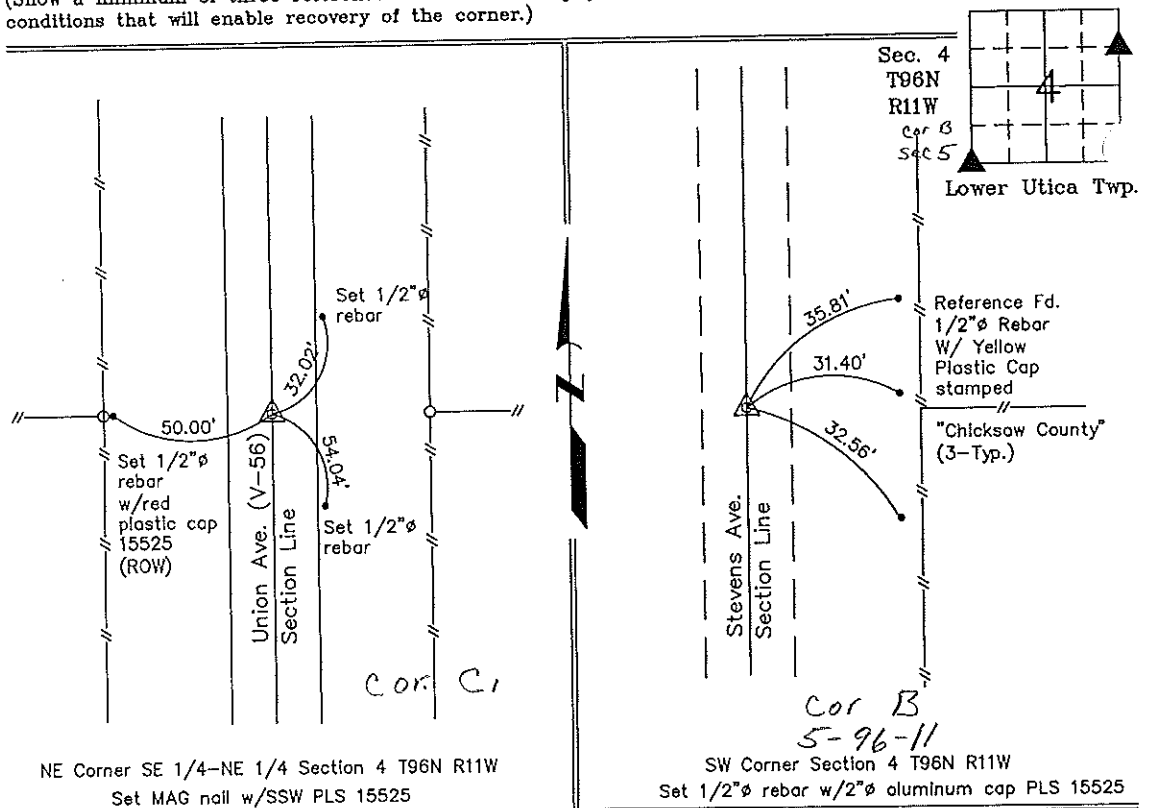
Monument Description and Remarks: Northeast Corner of the Southeast Quarter of the
Northeast Quarter of Section 4 T96N R11W: Set Mag Nail w/SSW PLS 15525 on line
between the Northeast Corner and the East 1/4 Corner at a prorated distance from
original government notes.

Southwest Corner Section 4 T96N R11W: Fd. 5/8" ϕ iron pin from County ties in Field Book "Lower Utica Twp." Sec 5 Corner "B".

PLAN - VIEW

49611ju.dwg Project Number 02267.LS
FB. 46J PG. 48-52

(Show a minimum of three reference ties to durable physical objects, relevant monuments and physical conditions that will enable recovery of the corner.)



I hereby certify that this land surveying document was prepared and the related survey work was performed by me or under my direct personal supervision and that I am a duly licensed Land Surveyor under the laws of the State of Iowa.

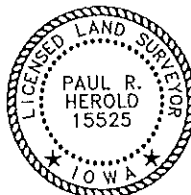
Paul R. Herold 1-23-03

License number 15525
My license renewal date is December 31, 2004.
Sheets covered by this seal: Individual

List Corners to be Indexed

Corners	Section	Twp.	Range
NE-SE-NE	4	96N	11W
SW	4	96N	11W

X:\Section Corners\Sec. 04\4-96-11ju.dwg



County Engineer
Coeur