

Chickasaw Co. Recorder
Cindy Messersmith
Fee Book 2008-1035

05/29/2008 00354PM
SCC SEC COR CERT
Book: Page: # Pages: 1
Total Fees: \$7.00

Herold - Reicks Surveying, 25 1/2 East Main Street, Suite 204, New Hampton, IA 50659, Ph. 641-394-2725

UNITED STATES PUBLIC LAND SURVEY CORNER CERTIFICATE

Land Survey Monuments situated in:

Section 3, Township 96 North, Range 11 West of the Fifth Principal Meridian,
Chickasaw County, Iowa. Previously recorded in none

in County Recorder's Office.

(book, page, document number, etc.)

(Show reason for preparing this certificate, the evidence and detailed procedures used in establishing the corner positions and monumentation found or placed.)

Monument Description and Remarks:

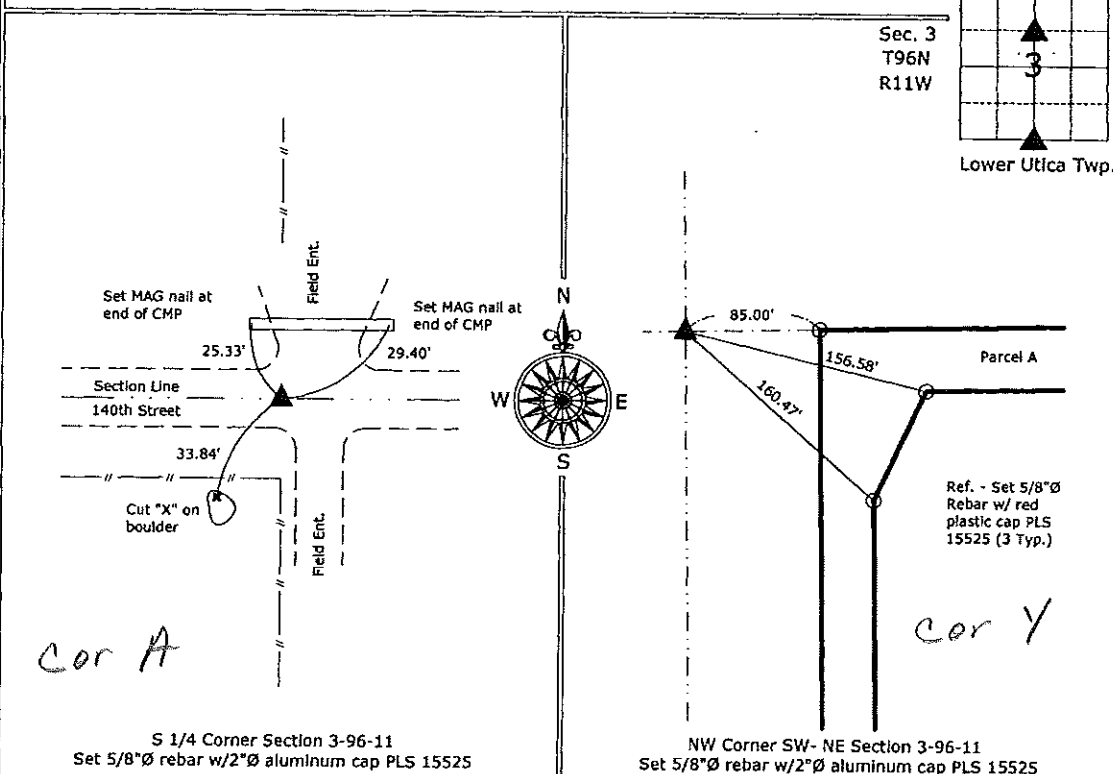
S 1/4 Corner Section 3-96-11: Searched for ties from the County Engineer's office, none exist.

Set 5/8"Ø rebar w/2"Ø Alum. Cap PLS 15525 at the centerline of 140th Street in line with possession line fences running North and South.

NW Corner SW- NE Section 3-96-11: Set 5/8"Ø rebar w/2"Ø Alum. Cap PLS 15525 at an average prorated distance from original government notes on line and between the Center and N 1/4 Corners.

PLAN - VIEW

(Show a minimum of three reference ties to durable physical objects, relevant monuments and physical conditions that will enable recovery of the corner.)



S 1/4 Corner Section 3-96-11
Set 5/8"Ø rebar w/2"Ø aluminum cap PLS 15525

NW Corner SW- NE Section 3-96-11
Set 5/8"Ø rebar w/2"Ø aluminum cap PLS 15525



I hereby certify that this land surveying document was prepared and the related survey work was performed by me or under my direct personal supervision and that I am a duly licensed Land Surveyor under the laws of the State of Iowa.

Paul R. Herold Date: *5-28-08*

Paul R. Herold

License number 15525

My license renewal date is December 31, 2008.

Sheets covered by this seal: Individual sheet only

List Corners to be Indexed

Corners	Section	Twp.	Range
S 1/4	3	96	11
NW-SW-NE	3	96	11

Project Number: 2008-041

FB: Chickasaw County 1, Pgs. 67-69

S:\Projects\2008\2008-041\map\2008-041.dwg, 5/28/2008 4:14:29 PM