

Section 26-96-11
As referred to in
Engr. The Book

TEKIPPE ENGINEERING, P.C., 128 South Vine Street, West Union, Iowa 52175 Phone (319) 422-5131

UNITED STATES PUBLIC LAND SURVEY CORNER CERTIFICATE

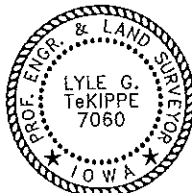
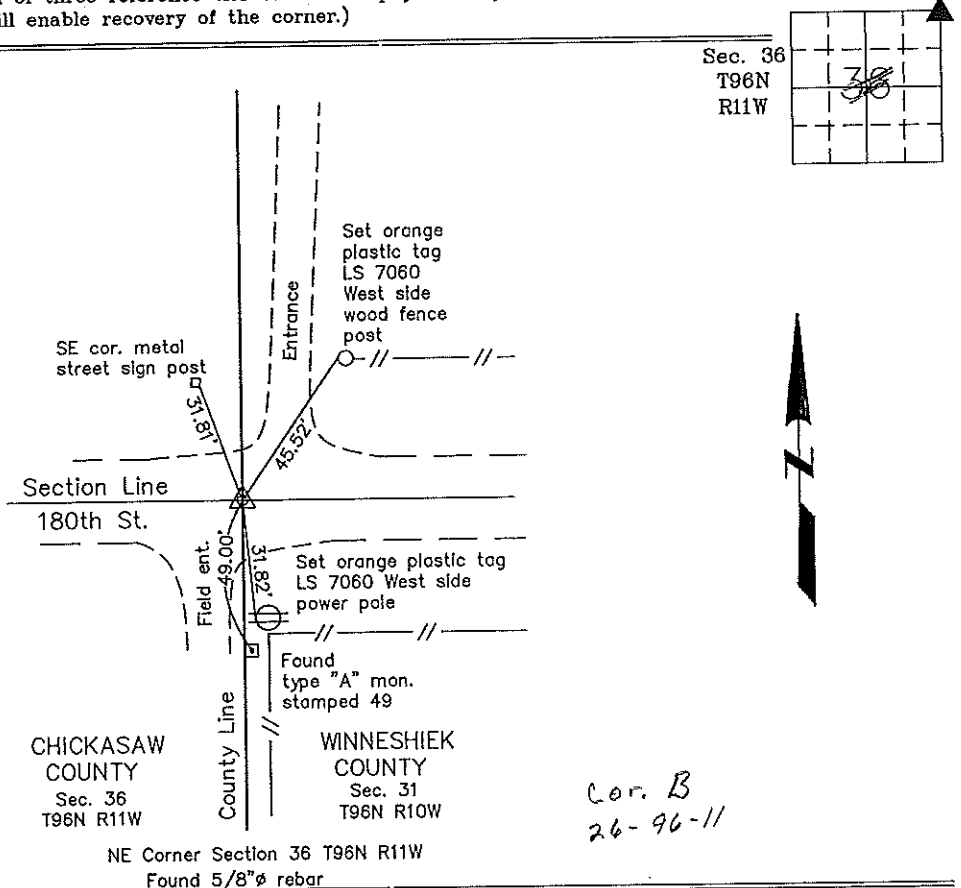
Land Survey Monuments situated in Section 26 ^{OF} 36, Township 96 North, Range 11 West, of the Fifth Principal Meridian, CHICKASAW County, Iowa.
Previously recorded in none in County Recorder's Office.
(book, page, document number, etc.)

(Show reason for preparing this certificate, the evidence and detailed procedures used in establishing the corner positions and monumentation found or placed.)

Monument Description and Remarks: NE Corner Section 36 T96N R11W: Found 5/8"Ø rebar with information obtained from the Winneshiek County Engineer's Office in Field Books "Jackson Twp. Corner Ties," Page 57, and "Jackson Twp.," Page 28.

PLAN - VIEW

(Show a minimum of three reference ties to durable physical objects, relevant monuments and physical conditions that will enable recovery of the corner.)



I hereby certify that this land surveying document was prepared and the related survey work was performed by me or under my direct personal supervision and that I am a duly licensed Land Surveyor under the laws of the State of Iowa.

Lyle G. Tekippe 11-17-98
Lyle G. Tekippe Date
License number 7060
My license renewal date is December 31, 1998.
Sheets covered by this seal: Individual

Corners	Section	Twp.	Range
NE	36	96N	11W

Cor. D - 36-96-11

Placed in the book 11/19/