

2001-0519

TeKIPPE ENGINEERING, P.C., 128 South Vine Street, West Union, Iowa 52175 Phone (319) 422-5131

UNITED STATES PUBLIC LAND SURVEY CORNER CERTIFICATE

OF

Land Survey Monuments situated in Section 36, Township 96 North, Range 11 West of the Fifth Principal Meridian, CHICKASAW County, Iowa.

Previously recorded in none in County Recorder's Office.
(book, page, document number, etc.)

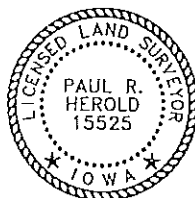
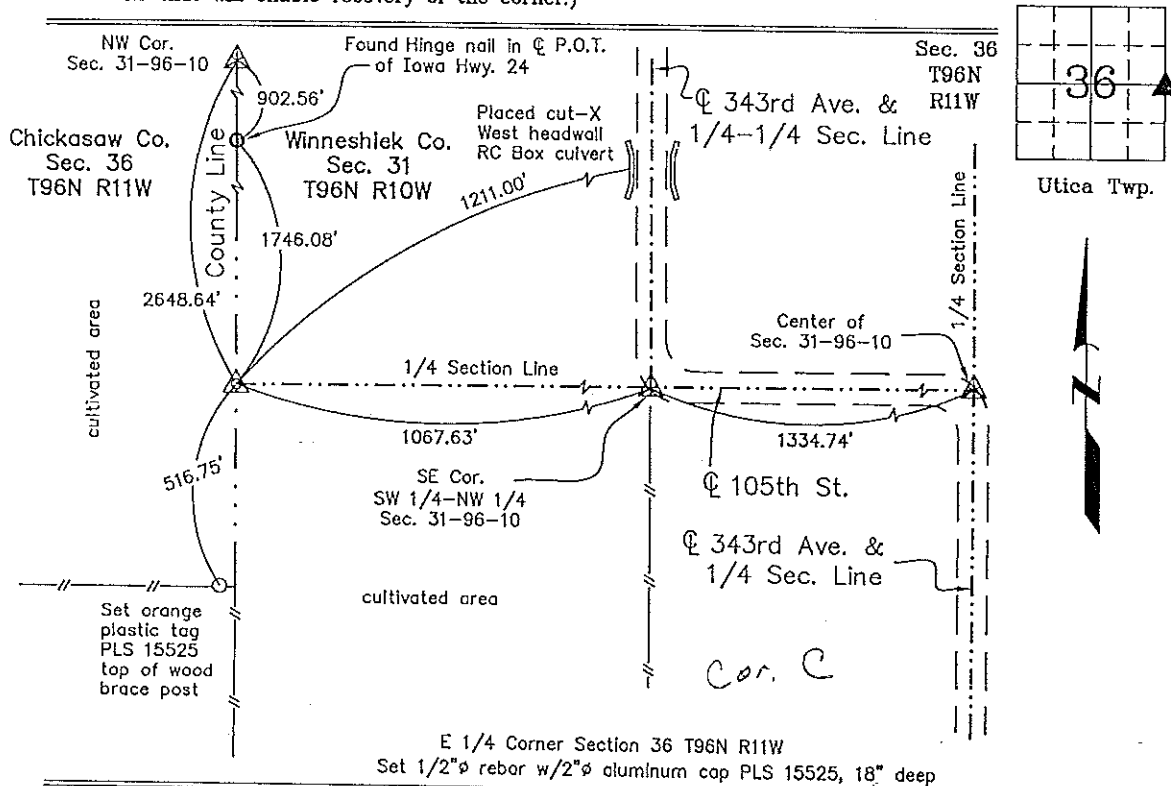
(Show reason for preparing this certificate, the evidence and detailed procedures used in establishing the corner positions and monumentation found or placed.)

Monument Description and Remarks: E 1/4 Corner Section 36 T96N R11W: Set 1/2"Ø rebar w/2"Ø aluminum cap PLS 15525 by extending a line from the Center of Section 31-96-10W to and across the SE Corner SW 1/4-NW 1/4 and intersecting a line extended from the NW Corner to and across a found hinge nail that is a P.O.T. on the County Line on the centerline of Iowa Highway 24. The corner monument is buried 18" deep in a cultivated area. The original monument and its reference ties have been removed by farming.

PLAN - VIEW

Project Number 00020.LS
FR 30E PG. 63-66

(Show a minimum of three reference ties to durable physical objects, relevant monuments and physical conditions that will enable recovery of the corner.)



I hereby certify that this land surveying document was prepared and the related survey work was performed by me or under my direct personal supervision and that I am a duly licensed Land Surveyor under the laws of the State of Iowa.

Paul R. Herold 03-21-01
Paul R. Herold Date
License number 15525
My license renewal date is December 31, 2002.
Sheets covered by this seal: Individual

List Corners to be Indexed			
Corners	Section	Twp.	Range
E 1/4	36	96N	11W

County Engineer's
Office