

# UNITED STATES PUBLIC LAND SURVEY CORNER CERTIFICATE

OF

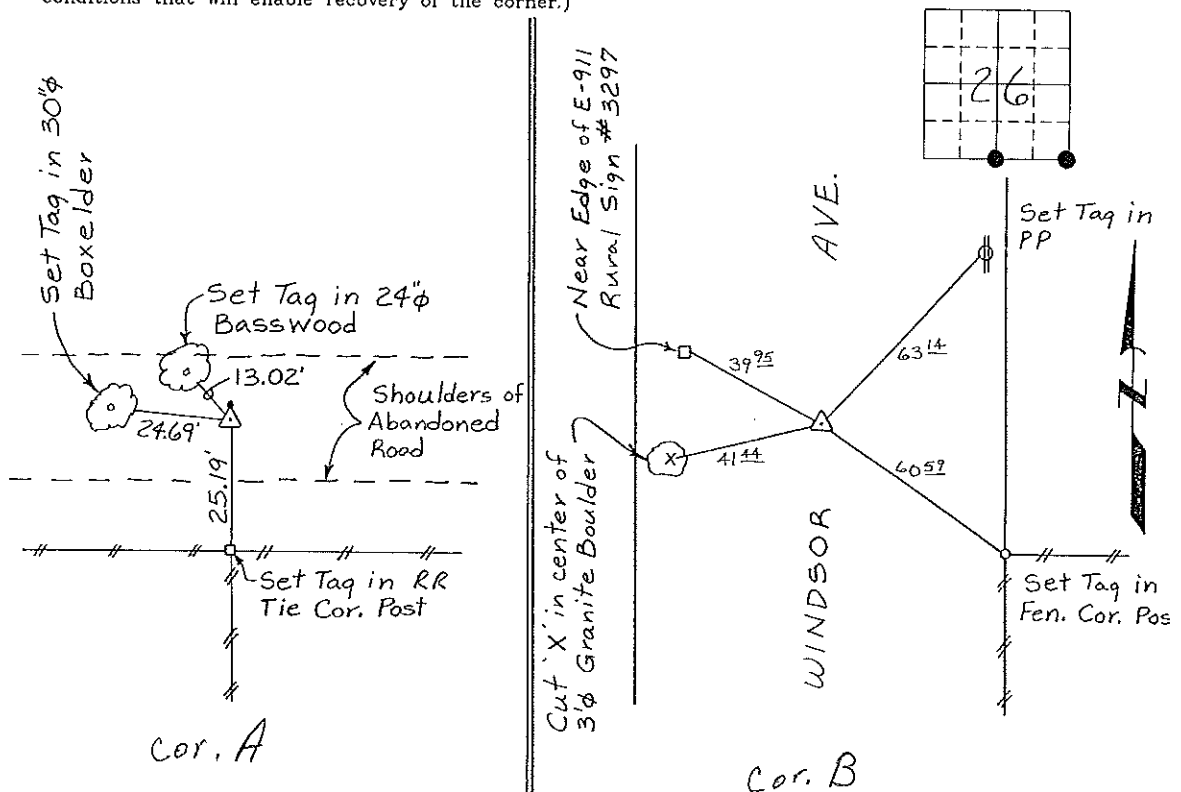
Land Survey Monuments situated in Section 26, Township 96 North, Range 11 West, of the Fifth Principal Meridian, CHICKASAW County, Iowa.  
Previously recorded in NONE in County Recorder's Office.  
(book, page, document number, etc.)

(Show reason for preparing this certificate, the evidence and detailed procedures used in establishing the corner positions and monumentation found or placed.)

Monument Description and Remarks: S 1/4 CORNER, SECTION 26-T96N-R11W: Found Stone 8" deep, Set 1/2" Rebar w/cap 0.50' N. of Stone.  
SE CORNER, SECTION 26-T96N-R11W: Found 5/8" Rebar

## PLAN - VIEW

(Show a minimum of three reference ties to durable physical objects, relevant monuments and physical conditions that will enable recovery of the corner.)



S 1/4 CORNER, SECTION 26-T96N-R11W SE CORNER, SECTION 26-T96N-R11W

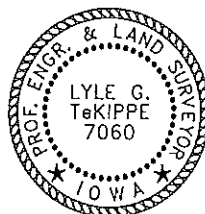
I hereby certify that the survey work was completed and this certificate was prepared by me or under my direct personal supervision and that I am a duly registered land surveyor under the laws of the state of Iowa.

Signature: Lyle G. TeKippe  
Lyle G. TeKippe

Date: 7-5-95 Reg. No. 7060

My Registration Renewal Date is December 31, 1996

Seal



Corners	List Corners to be Indexed		
	Section	Twp.	Range
S 1/4	26	96N	11W
SE	26	96N	11W

*Place in file  
Box 7/10/95*