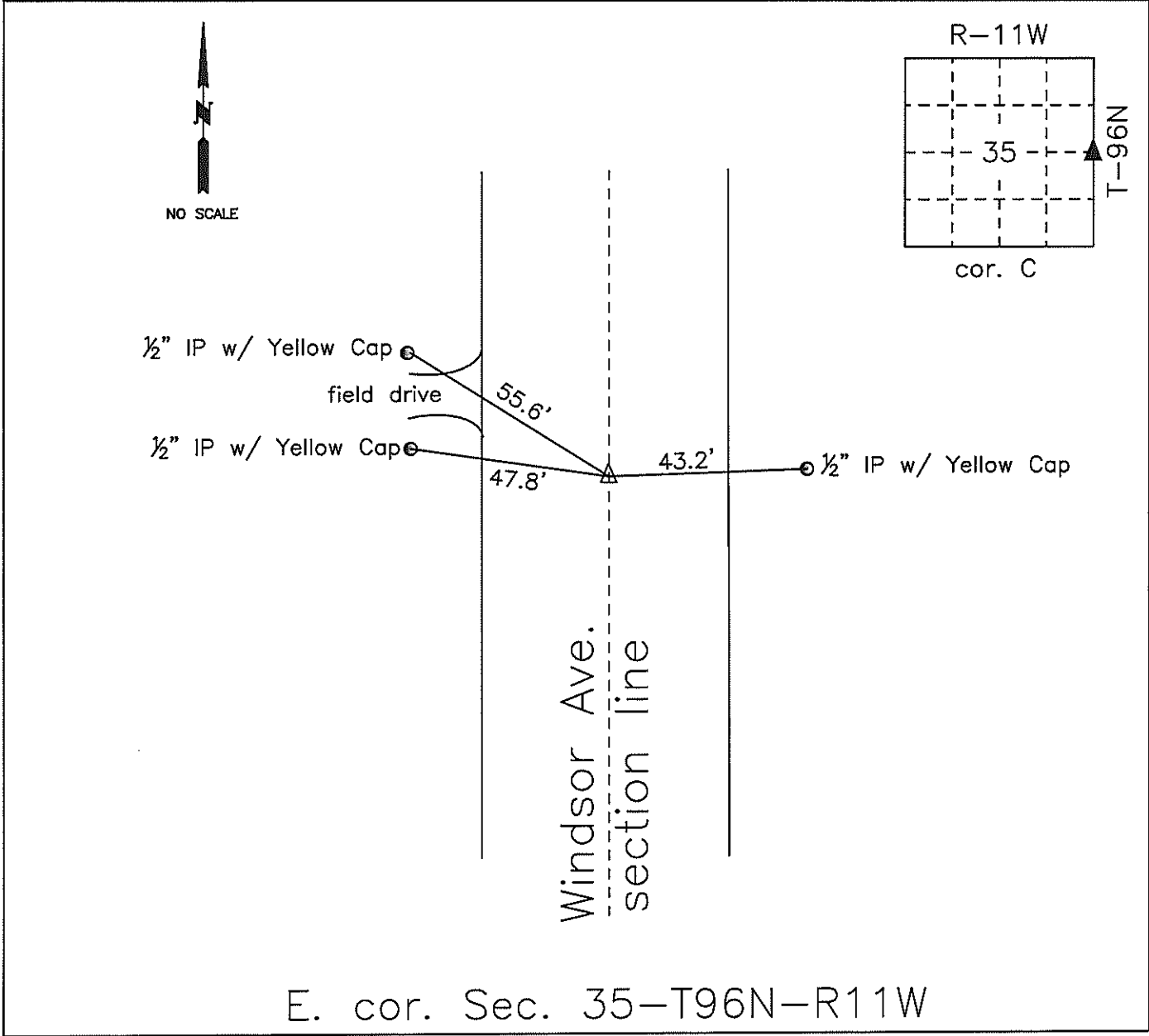


COUNTY ENGINEER'S SECTION CORNER
PRESERVATION RECORD

LAND SURVEY MONUMENT LOCATED IN SECTION 35, TOWNSHIP 96 N
NORTH, RANGE 11 W, OF THE 5TH P.M. Chickasaw COUNTY, IOWA
PREVIOUSLY RECORDED MAY 1956



MONUMENT DESCRIPTION AND NARRATIVE Found bent 1" IP (set for const. of adj. bridge #2172 in May-1956) sticking out of roadway. Previous ties were gone. Reset with 1/2" IP and tied in with three 1/2" I.P.s with Yellow Chickasaw County Caps.

I AM NOT A REGISTERED LAND SURVEYOR UNDER THE LAWS OF THE STATE OF IOWA
ROMAN LENSING CHICKASAW CO. DATE: 03/20/2015