

[illegible]

# United States Public Land Survey Corner Certificate

Land Survey Monument situated in  
Section **34**, Township **96** North, Range **11** West of the Fifth Principal Meridian, **Chickasaw** County, Iowa.  
On file in **Document #2000-2061** in the County Recorder's Office.

**This certificate is being prepared in compliance with Iowa Code Chapter 355.11 because:**

- ☐ There is no certificate on file for this corner.  
☒ There are no longer three valid ties of record.  
☐ There are changes to reference ties of record.  
☐ There is change of monumentation of record.  
☐ To clarify description of record monument (ties).

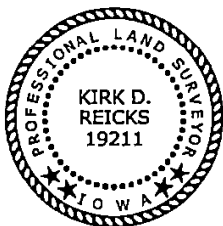
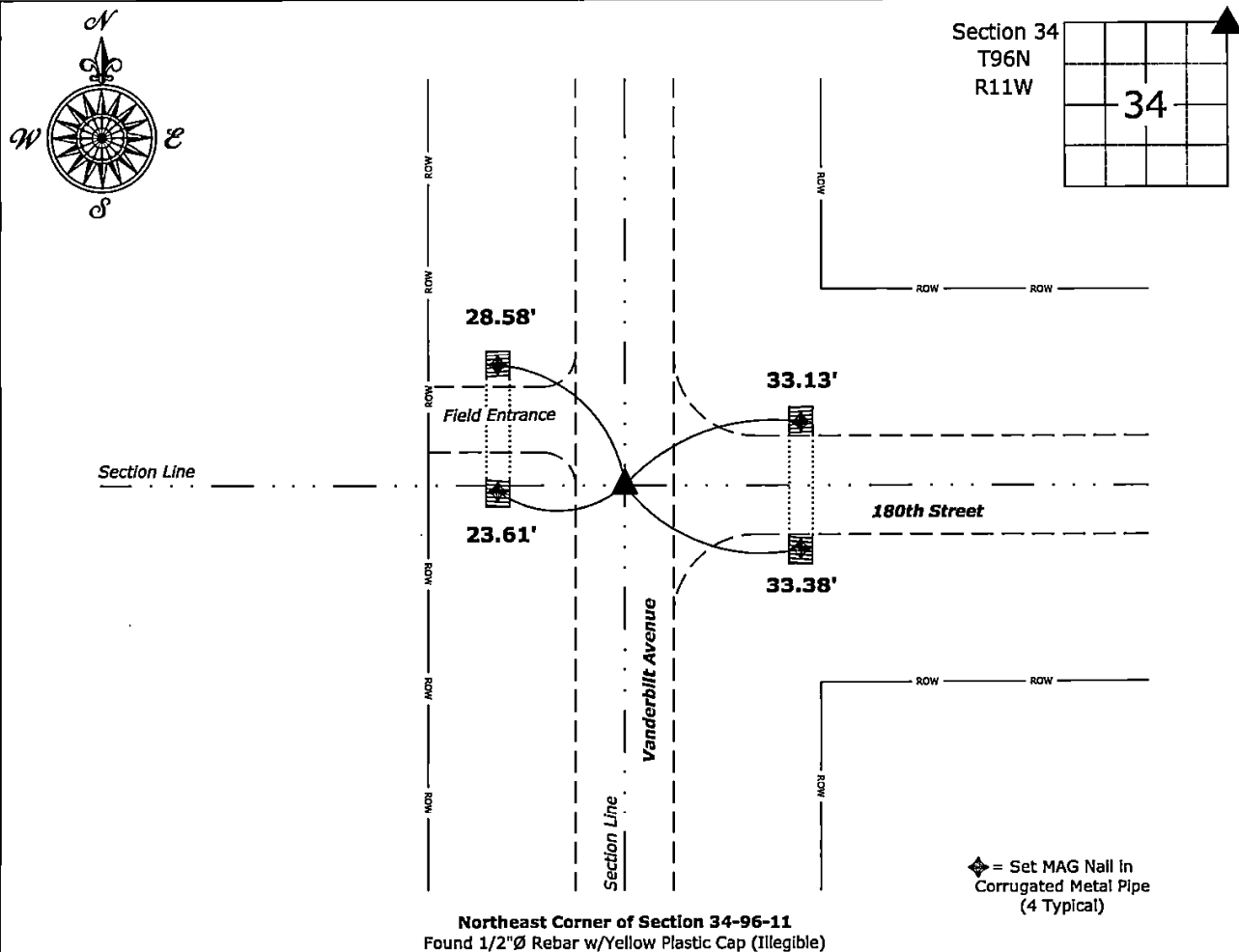
**Monument Description and Remarks:**

**Northeast Corner:**

Found 1/2"Ø Rebar w/Yellow Plastic Cap (Illegible) with information obtained from the previously recorded Section Corner Certificate.

### Plan View - Not to Scale

(Show a minimum of three reference ties to durable physical objects, relevant monuments and physical conditions that will enable recovery of the corner.)



I hereby certify that this land surveying document was prepared and the related survey work was performed by me or under my direct personal supervision and that I am a duly licensed Land Surveyor under the laws of the State of Iowa.

Kirk D. Reicks 12-16-2024  
Kirk D. Reicks Date:

License number 19211  
My license renewal date is December 31, 2024.  
Sheets covered by this seal: Individual sheet only

### List Corner to be Indexed

Corner	Section	Township	Range
NE	34	96	11

**Project Number: 2024-145**

FB: Chickasaw 13, Page(s) 24-25

File: S:\\_ Projects - NHO\County Control Systems - NHO\CHICKASAW\CHICK-23\CHICK-23-2024.dwg, 12/12/2024 2:16:16 PM