

United States Public Land Survey Corner Certificate

Land Survey Monument situated in
Section **34**, Township **96** North, Range **11** West of the Fifth Principal Meridian, **Chickasaw** County, Iowa.
Not on file in the County Recorder's Office.

This certificate is being prepared in compliance with Iowa Code Chapter 355.11 because:

- ☒ There is no certificate on file for this corner.
☐ There are no longer three valid ties of record.
☐ There are changes to reference ties of record.
☐ There is change of monumentation of record.
☐ To clarify description of record monument (ties).

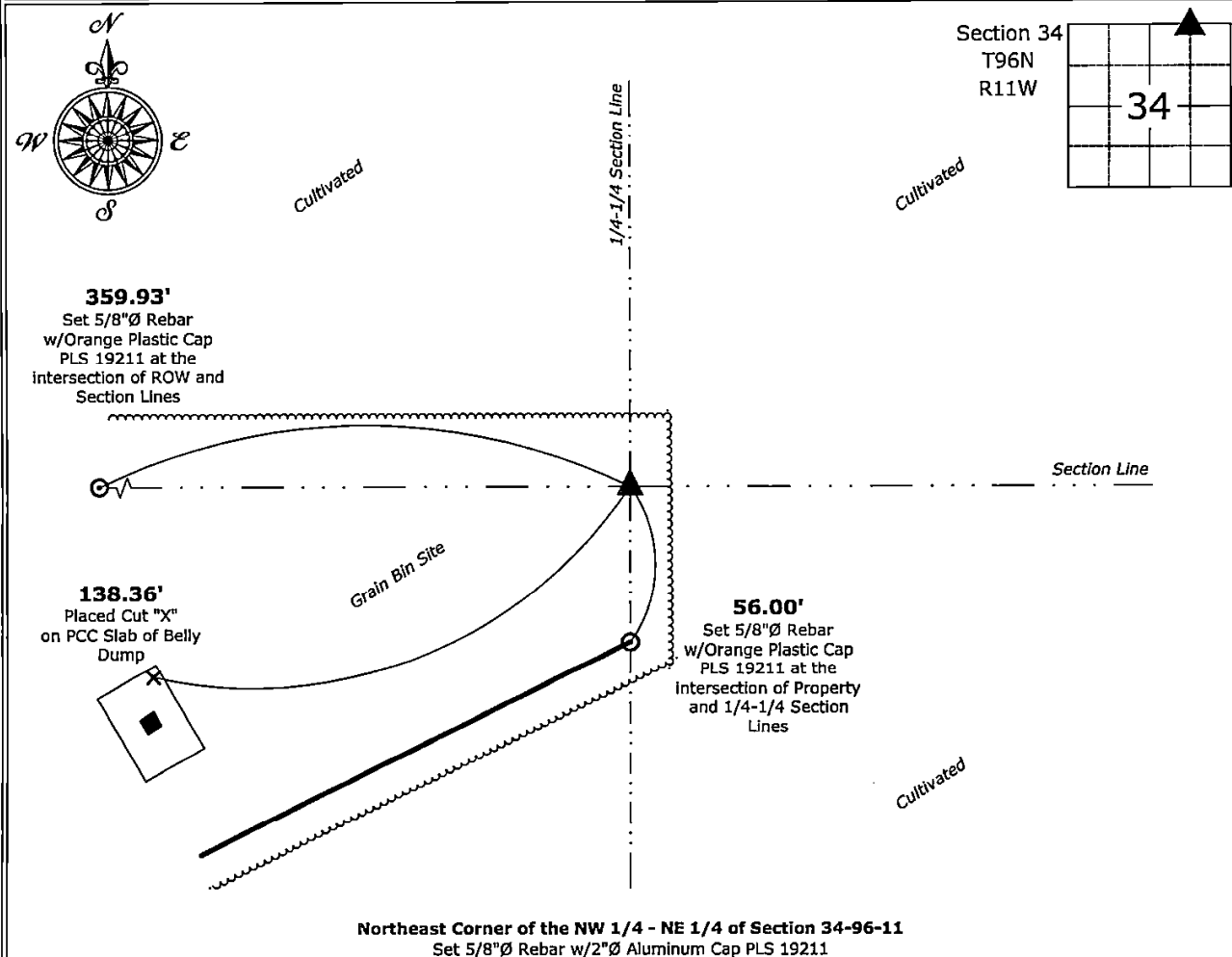
Monument Description and Remarks:

Northeast Corner of the NW 1/4 - NE 1/4:

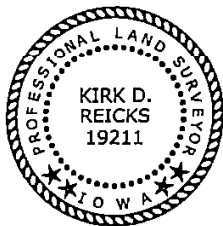
Set 5/8"Ø Rebar w/2"Ø Aluminum Cap PLS 19211 equidistant and on line between the North 1/4 and Northeast Corners of said Section.

Plan View - Not to Scale

(Show a minimum of three reference ties to durable physical objects, relevant monuments and physical conditions that will enable recovery of the corner.)



Northeast Corner of the NW 1/4 - NE 1/4 of Section 34-96-11
Set 5/8"Ø Rebar w/2"Ø Aluminum Cap PLS 19211



I hereby certify that this land surveying document was prepared and the related survey work was performed by me or under my direct personal supervision and that I am a duly licensed Land Surveyor under the laws of the State of Iowa.

K. D. K. 12-16-2024

Kirk D. Reicks

Date:

License number 19211

My license renewal date is December 31, 2024.

Sheets covered by this seal: Individual sheet only

List Corner to be Indexed

Corner	Section	Township	Range
NE-NW-NE	34	96	11

Project Number: 2024-145

FB: Chickasaw 13, Page(s) 24-25

File: S:_ Projects - NHO\County Control Systems - NHO\CHICKASAW\CHICK-23\CHICK-23-2024.dwg, 12/12/2024 2:16:01 PM