

XX  
C  
M  
S  
DOCUMENT NO. **01373**  
RECORDING FEE \$ **6.00**  
TRANSFER FEE \$

FILED FOR RECORD THE **27th** DAY OF **December**, 19**96** AT **8:30** O'CLOCK **A.** M. BOOK **162** Deeds PAGE **496**

STATE OF IOWA, CHICKASAW COUNTY.  
*Leitha M. Ross*  
LEITHA M. ROSS, Recorder  
By \_\_\_\_\_, Deputy

Section 34-96-11  
As referred to in  
Engr. Tie Book

Prepared by: Erdman Engineering P.C. 708 Commerce Drive, P.O. Box 246, Decorah Iowa, 52101  
Phone (319)382-4194, Fax (319)382-3623

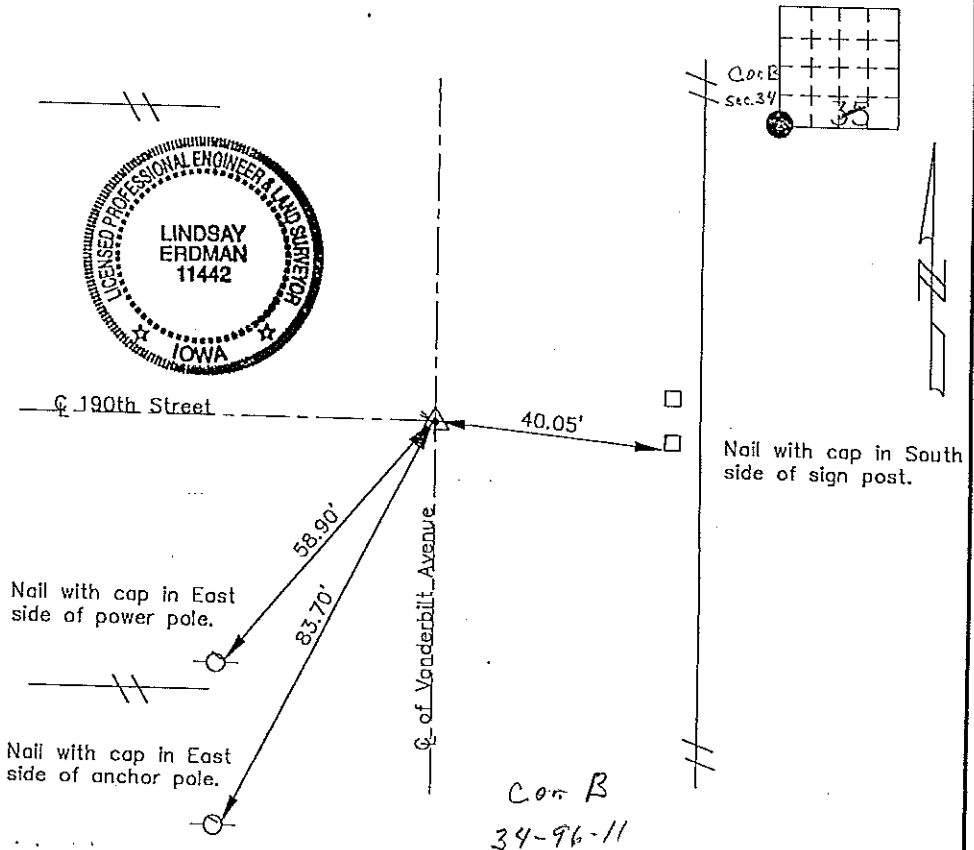
# United States Public Land Survey Corner Certificate

Land Survey Monuments situated in Section **34** of Township **96** Range **11** of the Fifth Principle Meridian, Chickasaw County, Iowa. Previously recorded in does not apply in County Recorder's Office.

(Show reason for preparing this certificate, the evidence and detailed procedures used in establishing the corner positions and monumentation found or placed.)

Monument Description and Remarks: This certificate is prepared in accordance with Section 355.11 of the 1995 Code of Iowa. No previous certificate has been filed for this corner location. Based on County Engineer's Reference Ties we found a 1" iron pin down  $\pm 12"$  below the crushed rock surface at the SW corner of Sec. 35-96-11. We did not find any of the previous tie markers but the description for the SW corner matched what we found at the corner location.

Plan-View  
(Show a minimum of three reference ties to durable physical objects, relevant monuments and physical conditions that will enable recovery of the corner.)



I hereby certify that the survey work was completed and this certificate was prepared by me or under my direct supervision and that I am a duly registered land surveyor under the laws of the State of Iowa.

Signature *Lindsay Erdman*  
Lindsay Erdman, P.E. and L.S.

Date: *12/20/96* Reg. No. **11442**

My license will be renewed January 1, 1997

Corners	Section	Twp.	Range
SW	35	96	11