

Prepared by & Return to: Kirk D. Reicks, HRS, LLC, 10 East Main Street, New Hampton, IA 50659, Phone 641-394-2725

United States Public Land Survey Corner Certificate

Land Survey Monument situated in
Section 28, Township 96 North, Range 11 West of the Fifth Principal Meridian, Chickasaw County, Iowa.
Not on file in the County Recorder's Office.

This certificate is being prepared in compliance with Iowa Code Chapter 355.11 because:

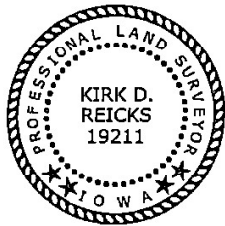
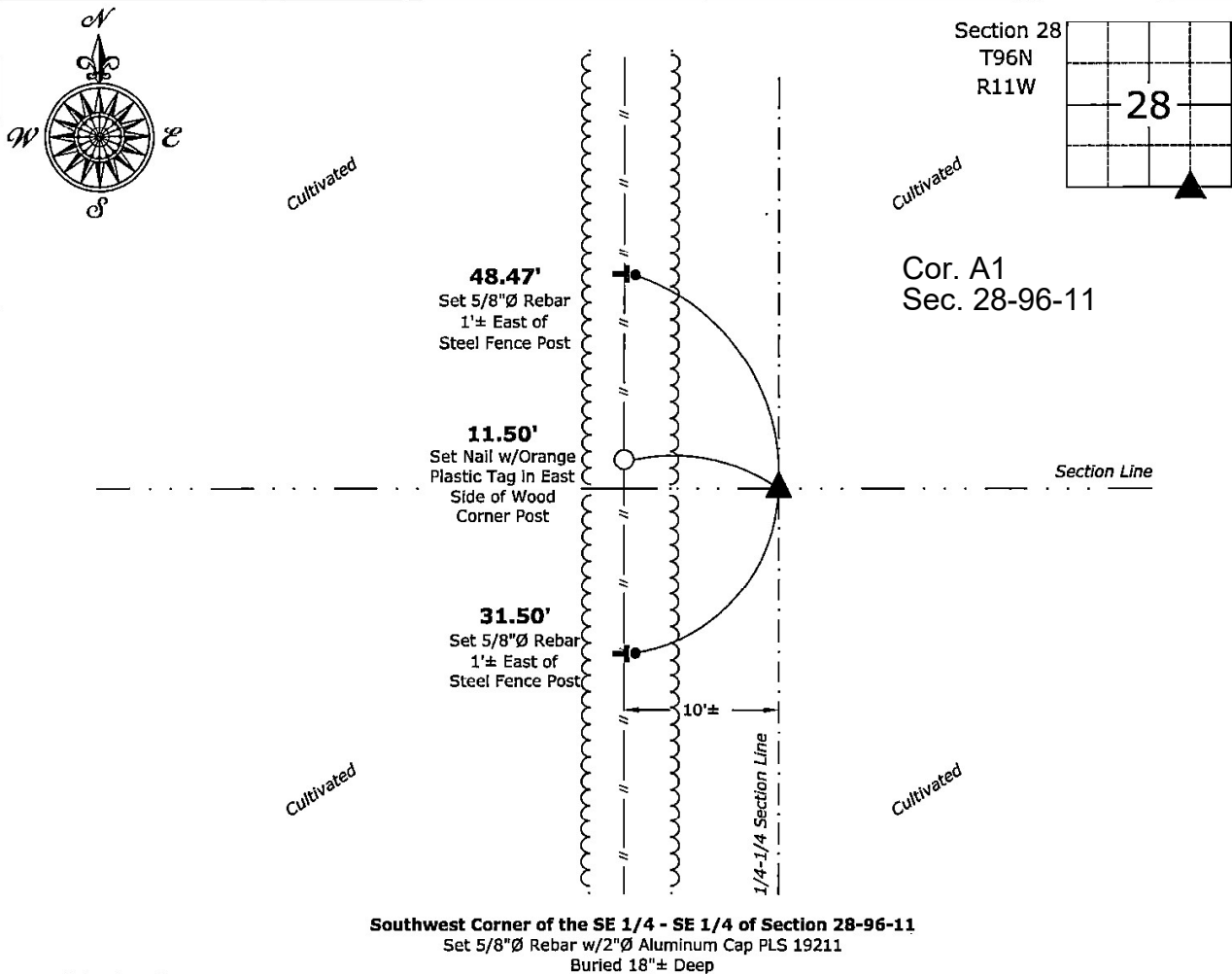
☒ There is no certificate on file for this corner.
☐ There are no longer three valid ties of record.
☐ There are changes to reference ties of record.
☐ There is change of monumentation of record.
☐ To clarify description of record monument (ties).

Monument Description and Remarks:

Southwest Corner of the SE 1/4 - SE 1/4: Set 5/8"Ø Rebar w/2"Ø Aluminum Cap PLS 19211 equidistant and on line between the South 1/4 and Southeast Corners of said Section. Monument was buried 18"± to prevent its obliteration by field cultivation.

Plan View - Not to Scale

(Show a minimum of three reference ties to durable physical objects, relevant monuments and physical conditions that will enable recovery of the corner.)



I hereby certify that this land surveying document was prepared and the related survey work was performed by me or under my direct personal supervision and that I am a duly licensed Land Surveyor under the laws of the State of Iowa.
Kirk D. Reicks 6-28-2023
Kirk D. Reicks Date:
License number 19211
My license renewal date is December 31, 2024.
Sheets covered by this seal: Individual sheet only

List Corner to be Indexed			
Corner	Section	Township	Range
SW-SE-SE	28	96	11

Project Number: 2023-072
FB: Chickasaw 12, Page(s) 13,17-22