

000001 111111 222222 333333 444444 555555 666666 777777 888888 999999

United States Public Land Survey Corner Certificate

Land Survey Monument situated in
Section **33**, Township **96** North, Range **11** West of the Fifth Principal Meridian, **Chickasaw** County, Iowa.
On file in **Book 159, Page 252** in the County Recorder's Office.

This certificate is being prepared in compliance with Iowa Code Chapter 355.11 because:

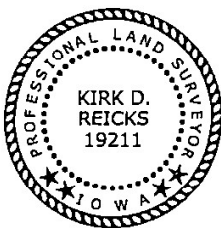
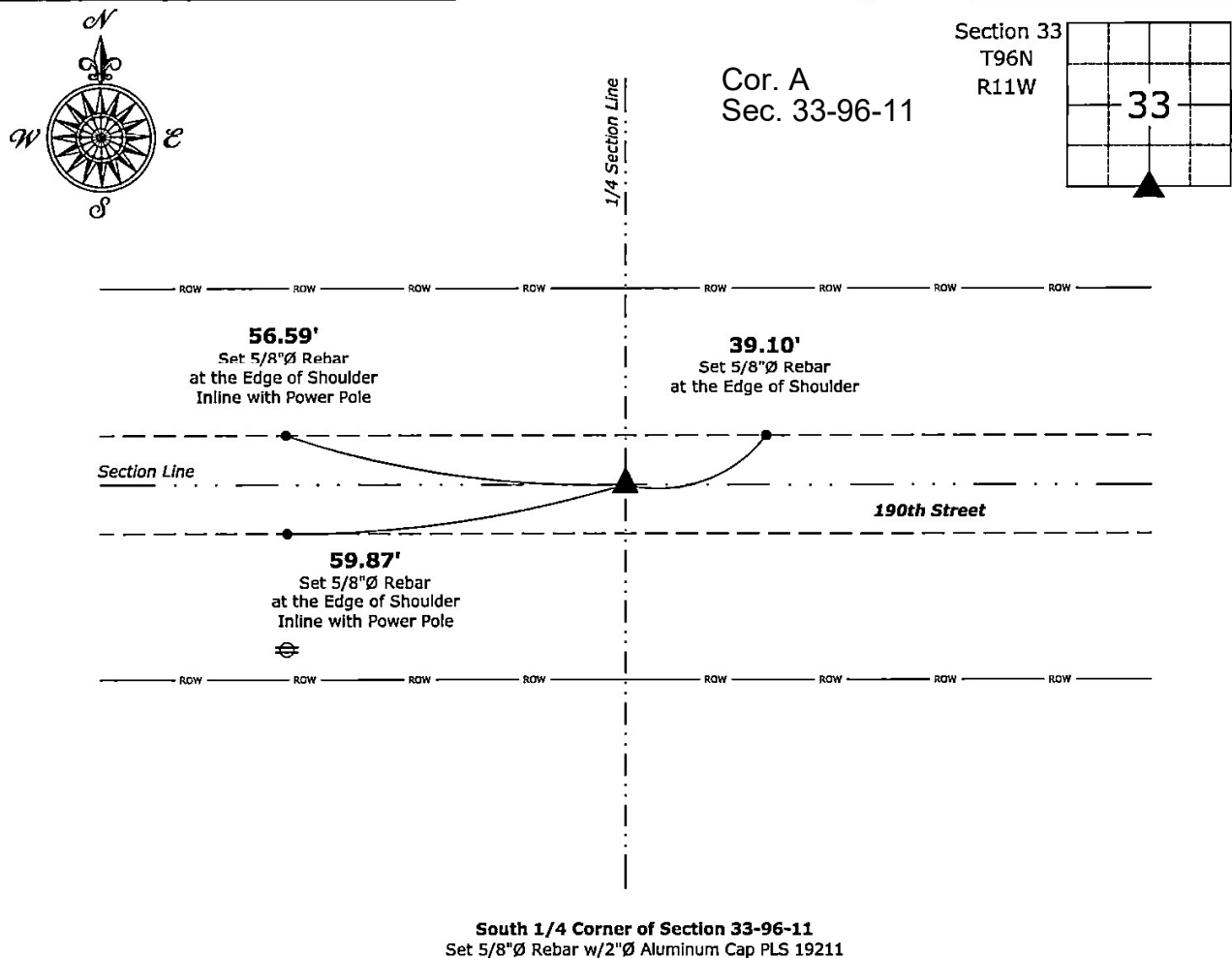
- ☐ There is no certificate on file for this corner.
☐ There are no longer three valid ties of record.
☐ There are changes to reference ties of record.
☒ There is change of monumentation of record.
☐ To clarify description of record monument (ties).

Monument Description and Remarks:

South 1/4 Corner: Set 5/8"Ø Rebar w/2"Ø Aluminum Cap PLS 19211 by doubling the distance from the Southwest Corner to and across the Southeast Corner of the SW 1/4 - SW 1/4, both of said Section, with information obtained from a Survey and Plat, as recorded in Document #2000-1552, on file in the County Recorder's office. The previous monument was removed with road maintenance.

Plan View - Not to Scale

(Show a minimum of three reference ties to durable physical objects, relevant monuments and physical conditions that will enable recovery of the corner.)



I hereby certify that this land surveying document was prepared and the related survey work was performed by me or under my direct personal supervision and that I am a duly licensed Land Surveyor under the laws of the State of Iowa.

Krist D. Paul 6-28-2023

Kirk D. Reicks

Date:

License number 19211

My license renewal date is December 31, 2024.

My license renewal date is December 31, 2021.
 Sheets covered by this seal: Individual sheet only

List Corner to be Indexed

Corner	Section	Township	Range
S 1/4	33	96	11

Project Number: 2023-072

FB: Chickasaw 12, Page(s) 13,17-22

File: S:\Projects - NHO\County Control Systems - NHO\CHICKASAW\CHICK-23\CHICK-23-2022.dwg, 6/28/2023 7:38:59 AM