

2001-0620

Section 29-96-11
As referred to in
Engr. Tie Book

TEKIPPE ENGINEERING, P.C., 128 South Vine Street, West Union, Iowa 52175 Phone (319) 422-5131

UNITED STATES PUBLIC LAND SURVEY CORNER CERTIFICATE

OF

Land Survey Monuments situated in Section 32, Township 96 North, Range 11 West of the Fifth Principal Meridian, CHICKASAW County, Iowa.
Previously recorded in (1) none (2) Book 150, Page 492 in County Recorder's Office.
(book, page, document number, etc.)

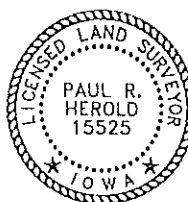
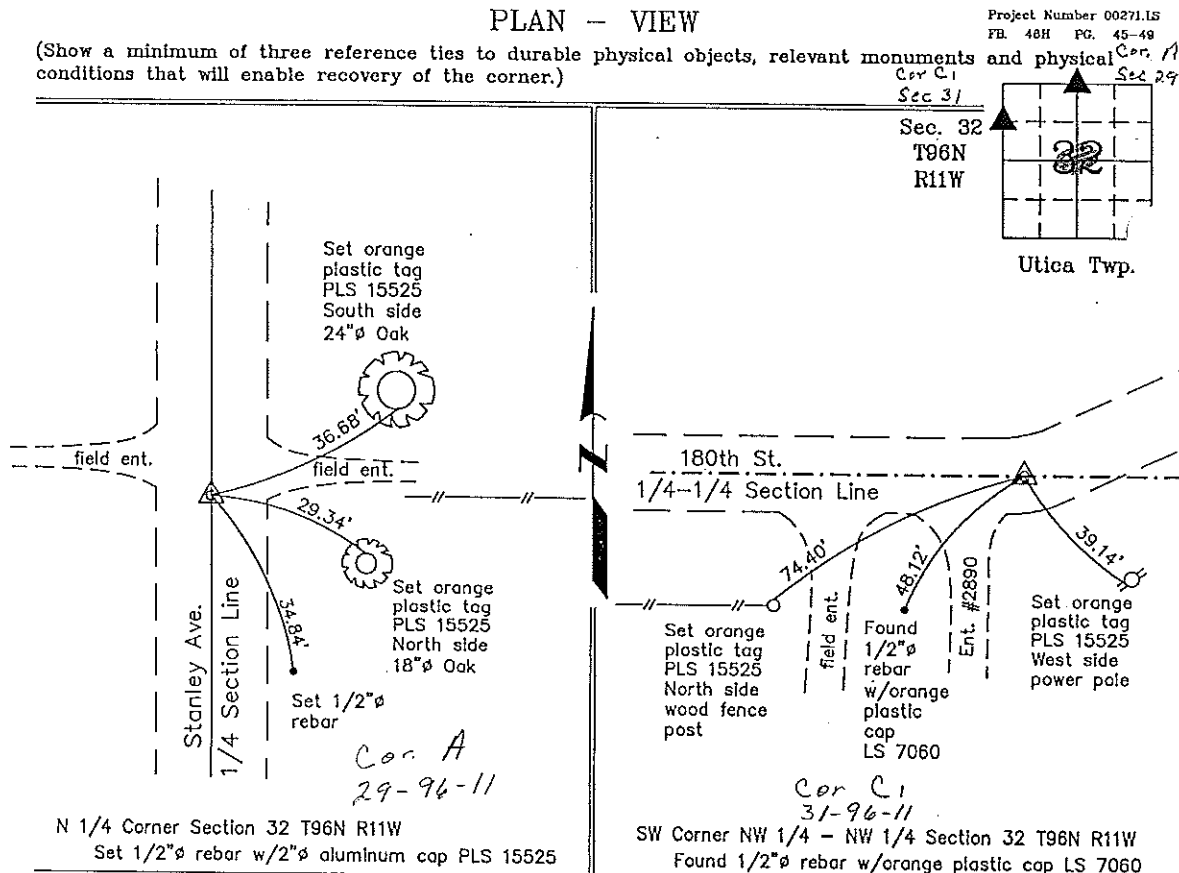
(Show reason for preparing this certificate, the evidence and detailed procedures used in establishing the corner positions and monumentation found or placed.)

Monument Description and Remarks: (1) N 1/4 Corner Section 32 T96N R11W: Set 1/2"Ø rebar w/2"Ø aluminum cap PLS 15525 on the centerline of County Road (Stanley Ave.) on the extension of the Section Line fence from the East.

(2) SW Corner NW 1/4 - NW 1/4 Section 32 T96N R11W: Found 1/2"Ø rebar w/orange plastic cap LS 7060 with information obtained from the previous Section Corner Certificate filed in the Chickasaw County Recorder's Office in Book 150, Page 492. Two reference ties were missing and two reference ties were added.

PLAN - VIEW

(Show a minimum of three reference ties to durable physical objects, relevant monuments and physical conditions that will enable recovery of the corner.)



I hereby certify that this land surveying document was prepared and the related survey work was performed by me or under my direct personal supervision and that I am a duly licensed Land Surveyor under the laws of the State of Iowa.

Paul R. Herold 04-02-01
Paul R. Herold Date
License number 15525
My license renewal date is December 31, 2002.
Sheets covered by this seal: Individual

List Corners to be Indexed

Corners	Section	Twp.	Range
N 1/4	32	96N	11W
SW-NW-NW	32	96N	11W

County Engineer
11/24