

2002 APR 12 AM 8 46

CINDY MESSERSMITH
COUNTY RECORDER

TEKIPPE ENGINEERING, P.C., 128 South Vine Street, West Union, Iowa 52175 Phone (563) 422-5131

UNITED STATES PUBLIC LAND SURVEY CORNER CERTIFICATE

OF

Land Survey Monuments situated in Section 29, Township 96 North, Range 11 West of the Fifth Principal Meridian, CHICKASAW County, Iowa.
Previously recorded in none in County Recorder's Office.
(book, page, document number, etc.)

(Show reason for preparing this certificate, the evidence and detailed procedures used in establishing the corner positions and monumentation found or placed.)

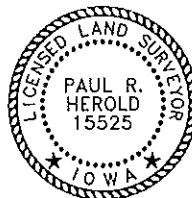
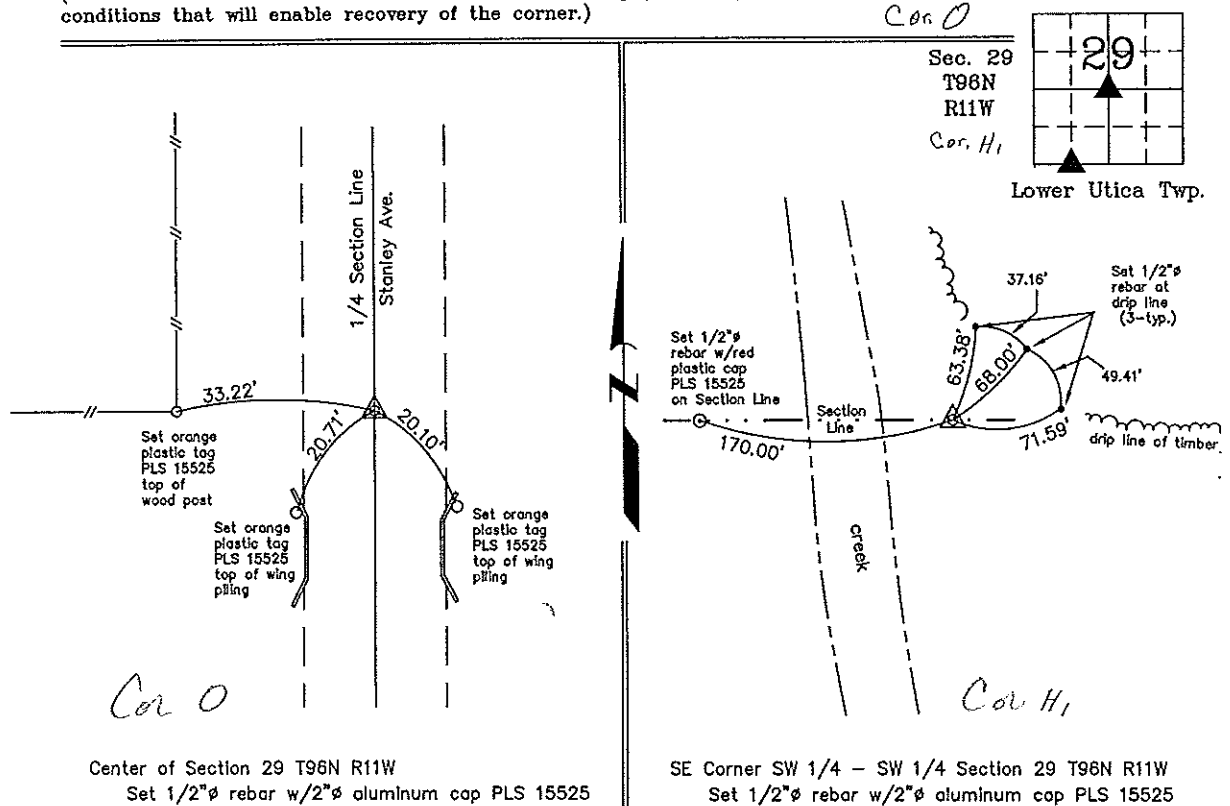
Monument Description and Remarks: Center of Section 29 T96N R11W: Set 1/2"Ø rebar w/2"Ø aluminum cap PLS 15525 on the centerline of Stanley Ave. on the extension of the fence line from the West as indicated in the Chickasaw County Engineer's Office in Corner Ties for Lower Utica Township, Section 29, Corner 'O'.

SE Corner SW 1/4 - SW 1/4 Section 29 T96N R11W: Set 1/2"Ø rebar w/2"Ø aluminum cap PLS 15525 equidistant and on line between the S 1/4 Corner and the SW Corner.

PLAN - VIEW

299611mv.dwg Project Number 02073.LS
FB. 46H PG. 70-71

(Show a minimum of three reference ties to durable physical objects, relevant monuments and physical conditions that will enable recovery of the corner.)



I hereby certify that this land surveying document was prepared and the related survey work was performed by me or under my direct personal supervision and that I am a duly licensed Land Surveyor under the laws of the State of Iowa.

Paul R. Harold 4-11-02
Paul R. Harold Date
License number 15525
My license renewal date is December 31, 2002.
Sheets covered by this seal: Individual

List Corners to be Indexed			
Corners	Section	Twp.	Range
Center	29	96N	11W
SE-SW-SW	29	96N	11W