

Section 30-96-11  
As referred to in  
Eng. The Book

2001-0619

TEKIPPE ENGINEERING, P.C., 128 South Vine Street, West Union, Iowa 52175 Phone (319) 422-5131

# UNITED STATES PUBLIC LAND SURVEY CORNER CERTIFICATE

OF

Land Survey Monuments situated in Section 29, Township 96 North, Range 11 West of the Fifth Principal Meridian, CHICKASAW County, Iowa.  
Previously recorded in none in County Recorder's Office.  
(book, page, document number, etc.)

(Show reason for preparing this certificate, the evidence and detailed procedures used in establishing the corner positions and monumentation found or placed.)

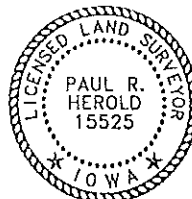
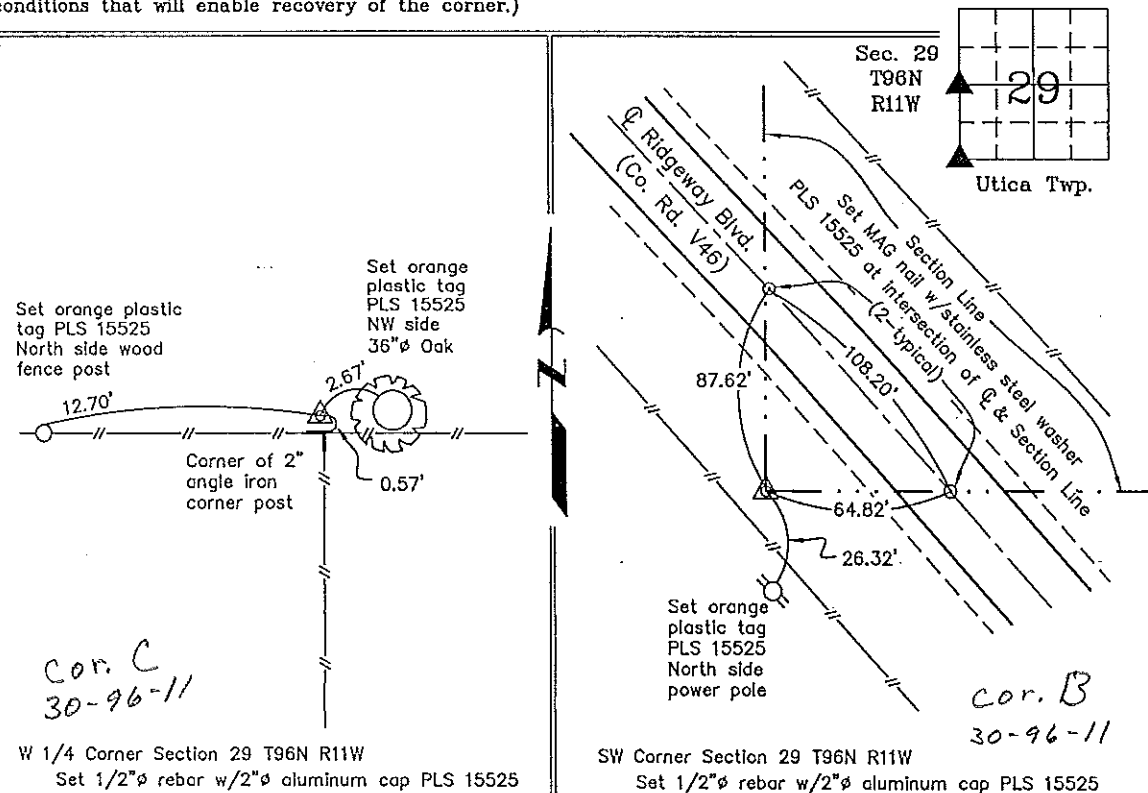
Monument Description and Remarks: W 1/4 Corner Section 29 T96N R11W: Set 1/2"  $\phi$  rebar w/2"  $\phi$  aluminum cap PLS 15525 at the intersection of the Section Line fence with the 1/4 Section Line fence.

SW Corner Section 29 T96N R11W: Set 1/2"  $\phi$  rebar w/2"  $\phi$  aluminum cap PLS 15525 by doubling the distance from the W 1/4 Corner, Section 32, to and across the SW Cor. NW 1/4-NW 1/4, Section 32.

## PLAN - VIEW

Project Number 00271.15  
FB. 48H PG. 45-49

(Show a minimum of three reference ties to durable physical objects, relevant monuments and physical conditions that will enable recovery of the corner.)



I hereby certify that this land surveying document was prepared and the related survey work was performed by me or under my direct personal supervision and that I am a duly licensed Land Surveyor under the laws of the State of Iowa.

Paul R. Herold 04-02-01

Paul R. Herold Date  
License number 15525  
My license renewal date is December 31, 2002.  
Sheets covered by this seal: Individual

List Corners to be Indexed			
Corners	Section	Twp.	Range
W 1/4	29	96N	11W
SW	29	96N	11W

County Engineer  
Repl