

UNITED STATES PUBLIC LAND SURVEY CORNER CERTIFICATE

OF

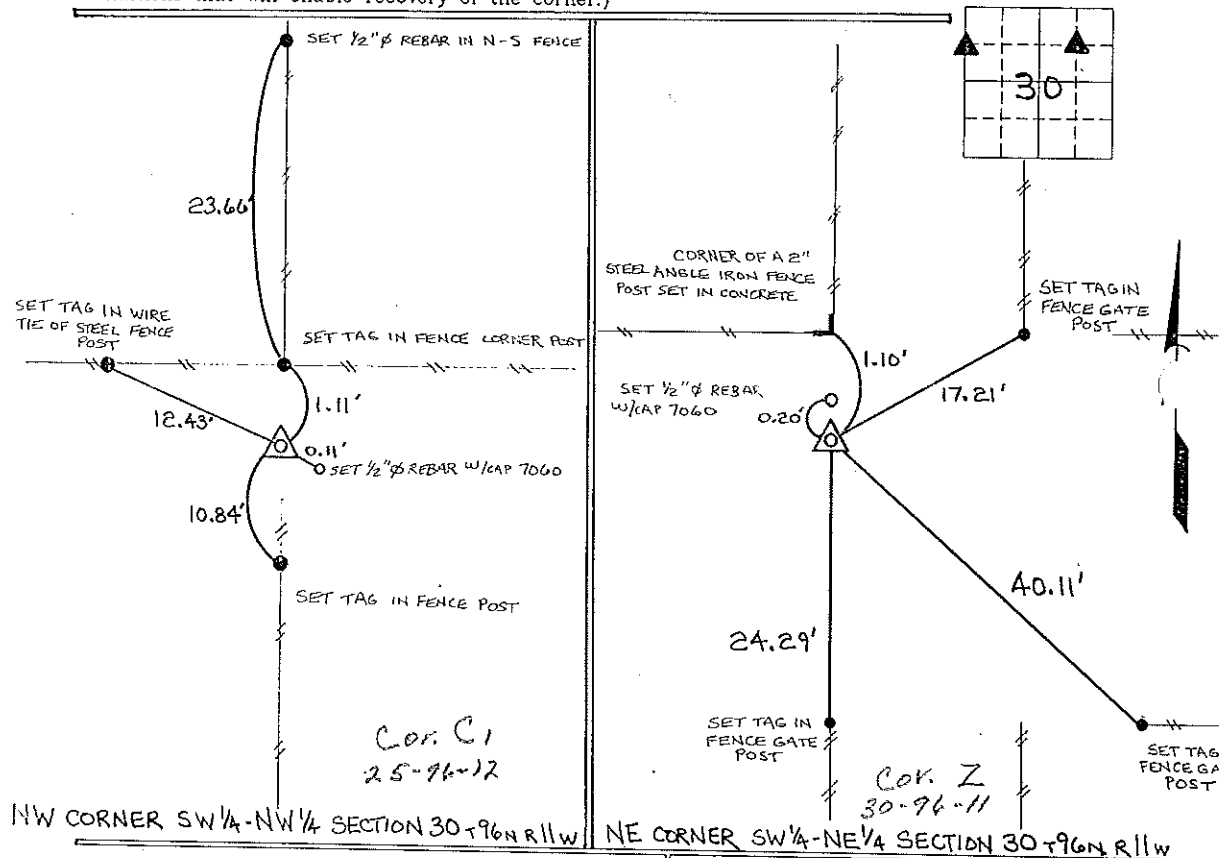
Land Survey Monuments situated in Section 30, Township 96 North, Range 11 West, of the Fifth Principal Meridian, CHICKASAW County, Iowa.
Previously recorded in NONE in County Recorder's Office.
(book, page, document number, etc.)

(Show reason for preparing this certificate, the evidence and detailed procedures used in establishing the corner positions and monumentation found or placed.)

Monument Description and Remarks: NW CORNER SW 1/4-NW 1/4 SECTION 30 T96N R11W: FOUND 2 1/2" X 6" X 14" LIMESTONE W/ POINTED TOP, BETWEEN 2 FENCEPOSTS AT A 4 WAY FENCE INTERSECTION. SET 1/2" Ø REBAR W/ CAP 7060 0.11 SOUTH EAST OF STONE
NE CORNER SW 1/4-NE 1/4 SECTION 30 T96N R11W: FOUND 4" X 6" X 17" GRANITE STONE W/ POINTED TOP PROJECTING 6" ABOVE GROUND, SET 1/2" Ø REBAR W/ CAP 7060 0.20 NORTH OF STONE.

PLAN - VIEW

(Show a minimum of three reference ties to durable physical objects, relevant monuments and physical conditions that will enable recovery of the corner.)



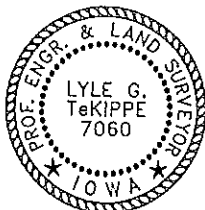
I hereby certify that the survey work was completed and this certificate was prepared by me or under my direct personal supervision and that I am a duly registered land surveyor under the laws of the state of Iowa.

Signature: Lyle G. TeKippe
Lyle G. TeKippe

Date: 9-8-95 Reg. No. 7060

My Registration Renewal Date is December 31, 1998

Seal



List Corners to be Indexed

Corners	Section	Twp.	Range
NW SW 1/4-NW 1/4	30	96N	11W
Cor. C1	25-96-12		
NE SW 1/4-NE 1/4	30	96N	11W
Cor. Z	30-96-11		

NW SW 1/4-NW 1/4 30 96N 11W
Cor. C1 25-96-12
NE SW 1/4-NE 1/4 30 96N 11W
Cor. Z 30-96-11

Placed in the
book 9/15/95
JPM

158-473

"County Engineer's Copy"