

Prepared by: Erdman Engineering, P.C., 708 Commerce Drive ,P.O. Box 246, Decorah, Iowa, (563)382-4194

UNITED STATES PUBLIC LAND SURVEY CORNER CERTIFICATE
OF

Land Survey Monuments situated in Section 21, Township 96 North, Range 11 West, of the Fifth Principal Meridian, Chickasaw County, Iowa, Previously recorded in does not apply in the County Recorder's Office.

Monument Description and Remarks:

This certificate is prepared in accordance with Section 355.11 of the Code of Iowa. No previous certificates have been filed for these corner locations.

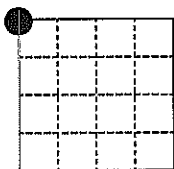
NW Corner: Chickasaw County Engineer's Reference ties show that an iron pin was set on the north side of a limestone in 1930. We made a magnetic locator search of a ±20' diameter area from the centerline of the county road and in line with the fence line running east. We did not find the iron pin as it appears to have been removed. We dug and probed a 2' diameter area at the approximate centerline of the county road and in line with the fence line running east. We did not find the limestone or the iron pin. We set a ½" diameter steel bar with 1 ½" aluminum cap #11442 at the centerline of the 66' wide right-of-way and in line with the fence line running east as the NW Corner of Section 21, Township 96 North, Range 11 West.

SW Corner: We found no record of the SW Corner being set. We found no evidence of a monument in the field other than an existing fence corner with fence lines running east, west and south. We used the fence corner as the SW Corner of Section 21, Township 96 North, Range 11 West and set a ½" diameter steel bar with 1 ½" aluminum cap on the northeast side of the post.

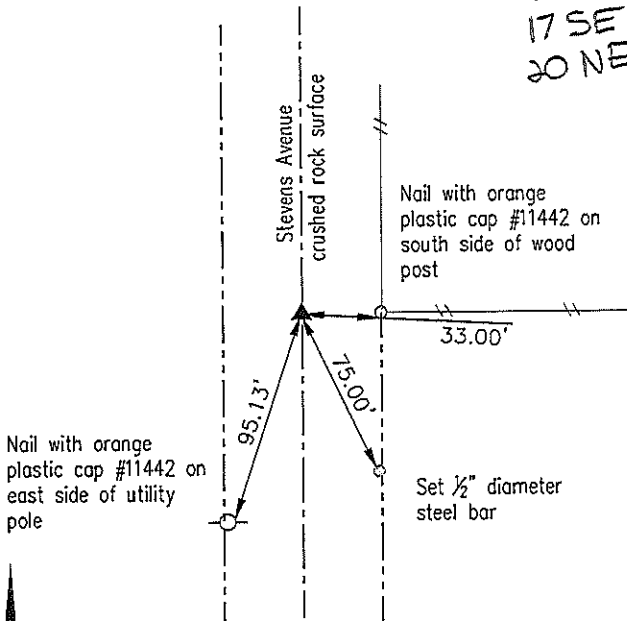
PLAN-VIEW
(NOT TO SCALE)

NW CORNER

Set ½" diameter steel bar with 1 ½" aluminum cap #11442

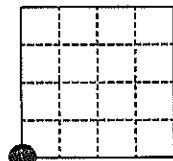


SECTION 21
16 SW
17 SE
20 NE



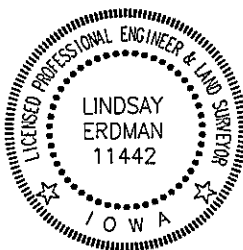
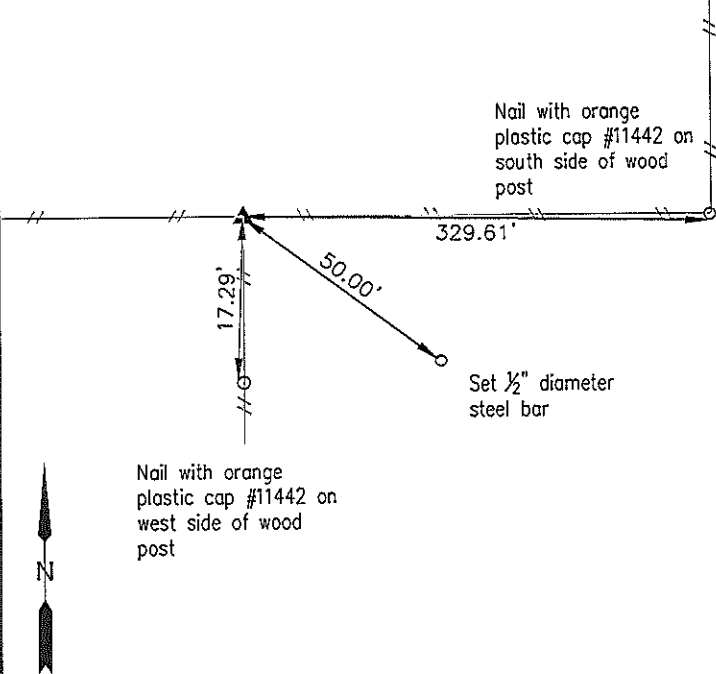
SW CORNER

Existing fence corner
Set ½" diameter steel bar with 1 ½" aluminum cap #11442 on NE side of post



SECTION 21

20 SE
28 NW
29 NE



I hereby certify that this land surveying document was prepared and the related survey work was performed by me or under my direct personal supervision and that I am a duly licensed Land Surveyor under the laws of the State of Iowa.

Lindsay Erdman 1/21/15
Lindsay Erdman, P.E. & P.L.S.
Licensed Professional Land Surveyor
Iowa License Number 11442
My License renewal date is December 31, 2016
Pages or sheets covered by this seal: THIS SHEET ONLY

List Corner(s) to be Indexed

Corner(s)	Section	Township	Range
NW Corner	21	96	11
SW Corner	21	96	11

ERDMAN
ENGINEERING, P.C.

CIVIL ENGINEERING & LAND SURVEYING