



Prepared by & Return to: Herold - Recks Surveying, 10 East Main Street, New Hampton, IA 50659, Ph. 641-394-2725

United States Public Land Survey Corner Certificate

Land Survey Monument situated in
Section **21**, Township **96** North, Range **11** West of the Fifth Principal Meridian, **Chickasaw** County, Iowa.
On file in **Document #2015-0091** in the County Recorder's office.

This certificate is being prepared in compliance
with Iowa Code Chapter 355.11 because:

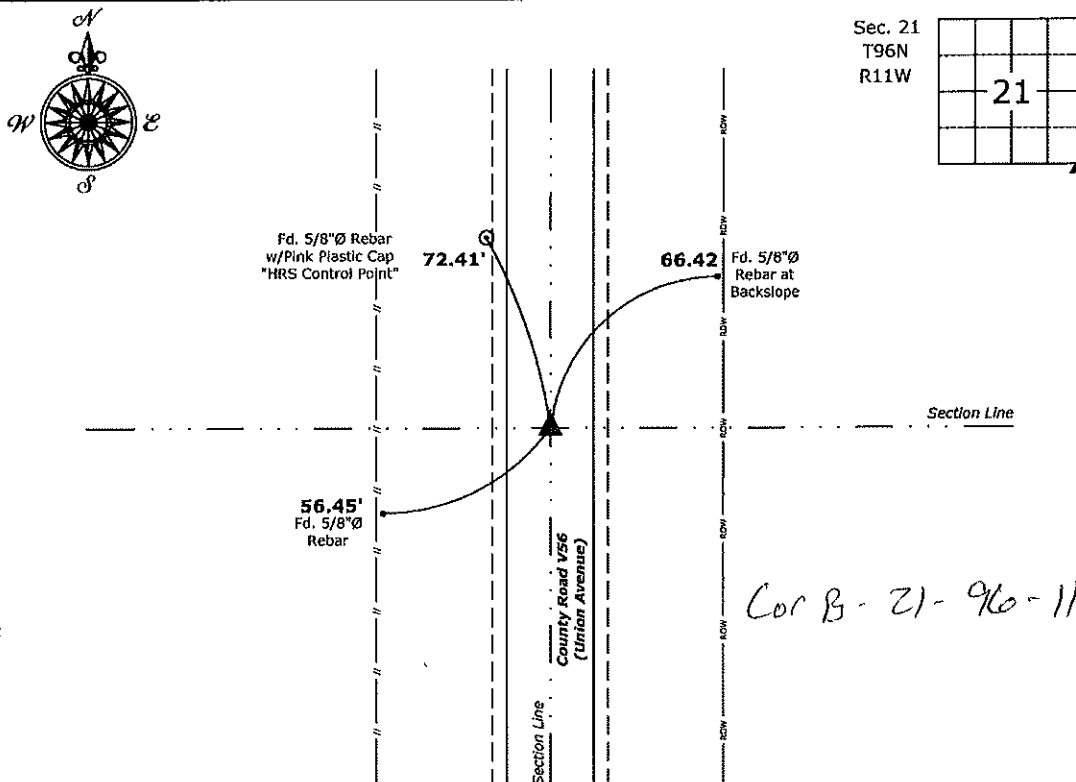
- ☐ There is no certificate on file for this corner.
☐ There are no longer three valid ties of record.
☐ There are changes to reference ties of record.
☒ There is change of monumentation of record.
☐ To clarify description of record monument (ties).

Monument Description and Remarks:

Southeast Corner: Set 1"Ø Bronze Survey Marker PLS 19211 at previous location (Found Nail) with coordinates
of the Corner obtained prior to highway reconstruction, Project No. FM-C019(89)--55-19.

Plan View

(Show a minimum of three reference ties to durable physical objects, relevant monuments and physical conditions that will enable recovery of the corner.)



Southeast Corner of Section 21-96-11
Set 1"Ø Bronze Survey Marker PLS 19211



I hereby certify that this land surveying document
was prepared and the related survey work was
performed by me or under my direct personal
supervision and that I am a duly licensed Land
Surveyor under the laws of the State of Iowa.

Kirk D. Reicks 6-17-20
Kirk D. Reicks Date:

License number 19211
My license renewal date is December 31, 2020.
Sheets covered by this seal: Individual sheet only

List Corner to be Indexed

Corner	Section	Twp.	Range
SE	21	96	11

Project Number: 2019-810

FB: 2019 Construction, Pgs. 14-36

