



Prepared by & Return to: Herald - Reicks Surveying, 10 East Main Street, New Hampton, IA 50659, Ph. 515-394-2725

## United States Public Land Survey Corner Certificate

Land Survey Monument situated in  
Section **22**, Township **96** North, Range **11** West of the Fifth Principal Meridian, **Chickasaw** County, Iowa.  
Not on file in the County Recorder's office.

This certificate is being prepared in compliance  
with Iowa Code Chapter 355.11 because:

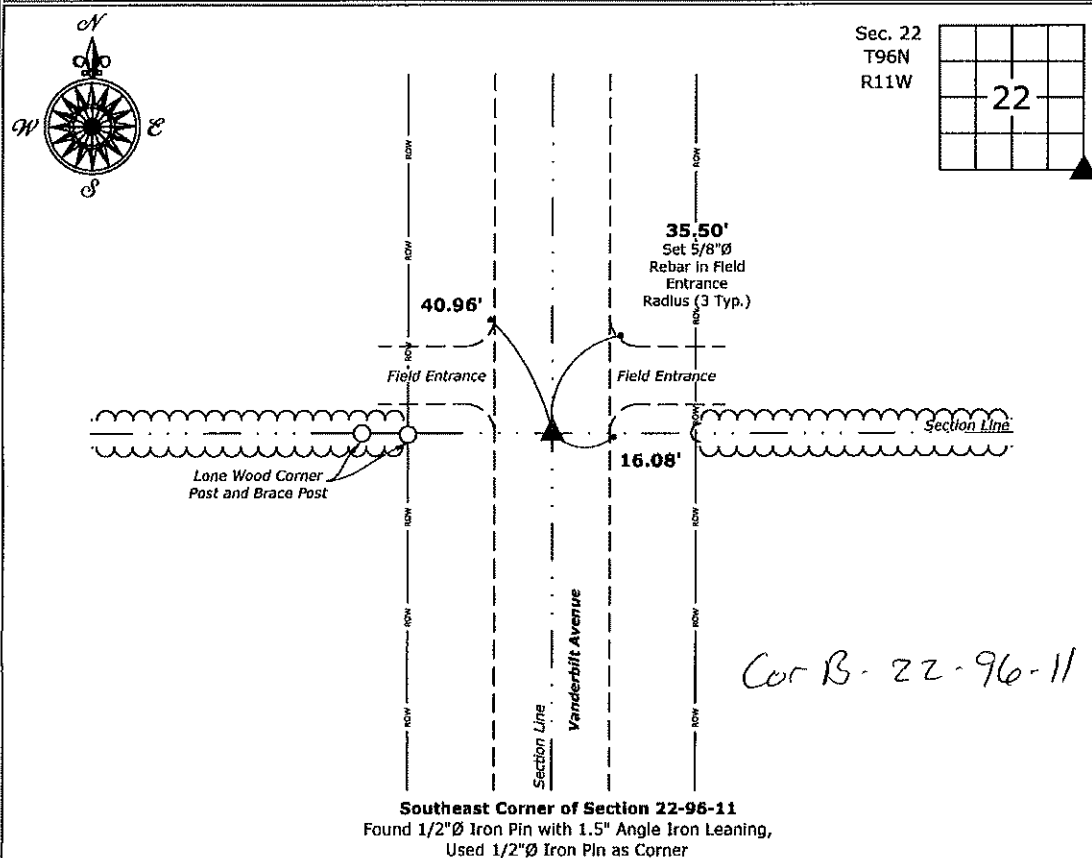
- ☒ There is no certificate on file for this corner.  
☐ There are no longer three valid ties of record.  
☐ There are changes to reference ties of record.  
☐ There is change of monumentation of record.  
☐ To clarify description of record monument (ties).

### Monument Description and Remarks:

**Southeast Corner:** Found 1/2"Ø Iron Pin with 1.5" Angle Iron Leaning with information obtained from the County Engineer's Office, in Section Ties Book, Township 96, Range 11. Used 1/2"Ø Iron Pin as the Corner.

### Plan View

(Show a minimum of three reference ties to durable physical objects, relevant monuments and physical conditions that will enable recovery of the corner.)



	I hereby certify that this land surveying document was prepared and the related survey work was performed by me or under my direct personal supervision and that I am a duly licensed Land Surveyor under the laws of the State of Iowa. <i>Kirk D. Reicks</i> 2-14-2020 Kirk D. Reicks Date: License number 19211 My license renewal date is December 31, 2020. Sheets covered by this seal: Individual sheet only				List Corner to be Indexed			
	Corner	Section	Twp.	Range				
	SE	22	96	11				
	Project Number: 2020-009 FB: Chickasaw 10, Pgs. 10-12							