

Chickasaw Co. Recorder  
Cindy Messersmith  
**Fee Book 2009-0425**

03/03/2009 00237PM  
SCC SEC COR CERT  
Book: Page: # Pages: 1  
Total Fees: \$7.00

Herold - Reicks Surveying, 25 1/2 East Main Street, Suite 204, New Hampton, IA 50659, Ph. 641-394-2125

## UNITED STATES PUBLIC LAND SURVEY CORNER CERTIFICATE

Land Survey Monuments situated in Section 24, Township 96 North, Range 11 West of the Fifth Principal Meridian, Chickasaw County, Iowa. Previously not recorded in the County Recorder's office.

This certificate is being prepared in compliance with Iowa Code Chapter 355.11 because:

- ☒ There is no certificate on file for this corner.  
☐ There are no longer three valid ties of record.  
☐ There are changes to reference ties of record.  
☐ There is change of monumentation of record.  
☐ To clarify description of record monument (ties).

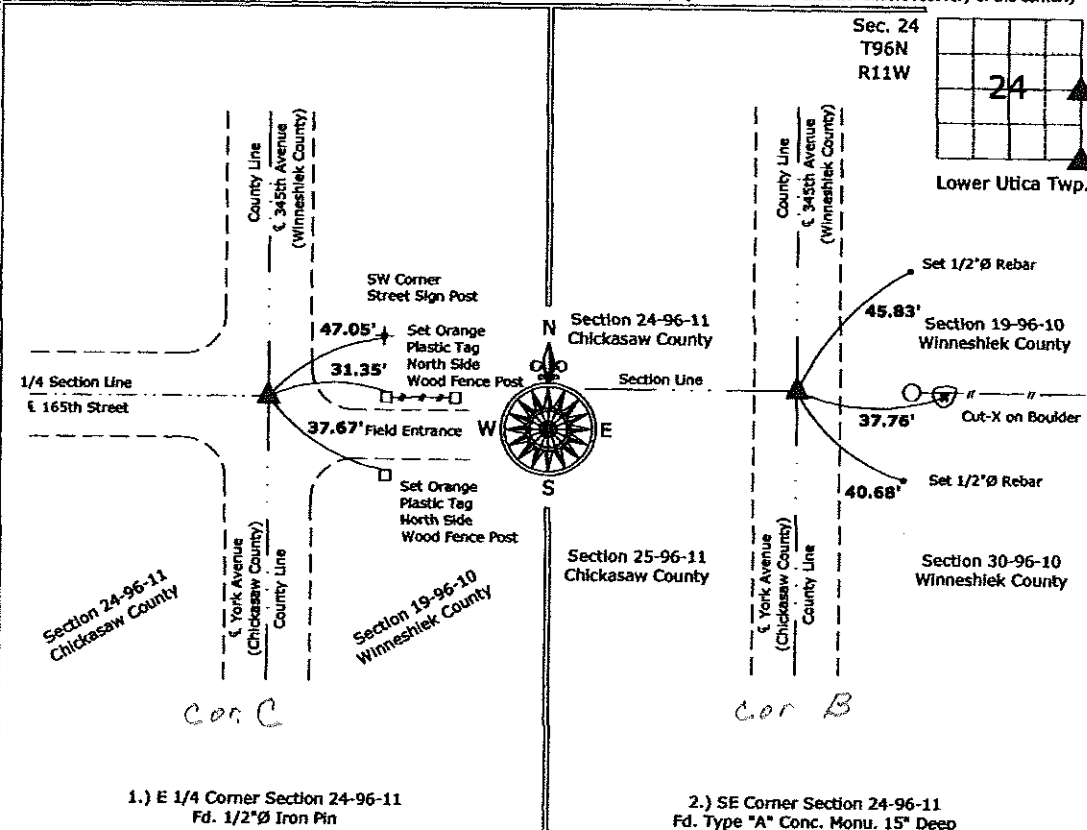
### Monument Description and Remarks:

1.) **E 1/4 Corner Section 24-96-11:** Fd. 1/2" Ø Iron Pin, from information obtained from the Chickasaw County Engineer's Office, in Field Book Lower Utica Township, Section 24, Corner "C", and cross checked with information obtained from the Winneshiek County Engineer's Office.

2.) **SE Corner Section 24-96-11:** Fd. Type "A" Conc. Monu. 15" Deep, from information obtained from the Winneshiek County Engineer's Office, in Field Book Jackson Township Corner Ties (WPA), Page 47.

### PLAN - VIEW

(Show a minimum of three reference ties to durable physical objects, relevant monuments and physical conditions that will enable recovery of the corner.)



1.) E 1/4 Corner Section 24-96-11  
Fd. 1/2" Ø Iron Pin

2.) SE Corner Section 24-96-11  
Fd. Type "A" Conc. Monu. 15" Deep



I hereby certify that this land surveying document was prepared and the related survey work was performed by me or under my direct personal supervision and that I am a duly licensed Land Surveyor under the laws of the State of Iowa.

*Kirk D. Reicks* 2-25-09  
Kirk D. Reicks Date:

License number 19211  
My license renewal date is December 31, 2010.  
Sheets covered by this seal: Individual sheet only

List Corners to be Indexed			
Corners	Section	Twp.	Range
E 1/4	24	96	11
SE	24	96	11

Project Number: 2009-018

FB: Winneshiek County 1, Pgs. 50-51

File: S:\Projects\2009-018\dwg\2009-018.dwg, 2/25/2009 04:22:50