

Prepared by & Return to: Harold - Reicks Surveying, 10 East Main Street, New Hampton, IA 50659, Ph 641-394-2725

UNITED STATES PUBLIC LAND SURVEY CORNER CERTIFICATE

Land Survey Monuments situated in Section **25**, Township **96 North**, Range **11 West** of the Fifth Principal Meridian, **Chickasaw County, Iowa. 1., 2.)** Not previously recorded in the County Recorder's office.

This certificate is being prepared in compliance with Iowa Code Chapter 355.11 because:

- 1 & 2 ☒ There is no certificate on file for this corner.
☐ There are no longer three valid ties of record.
☐ There are changes to reference ties of record.
☐ There is change of monumentation of record.
☐ To clarify description of record monument (ties).

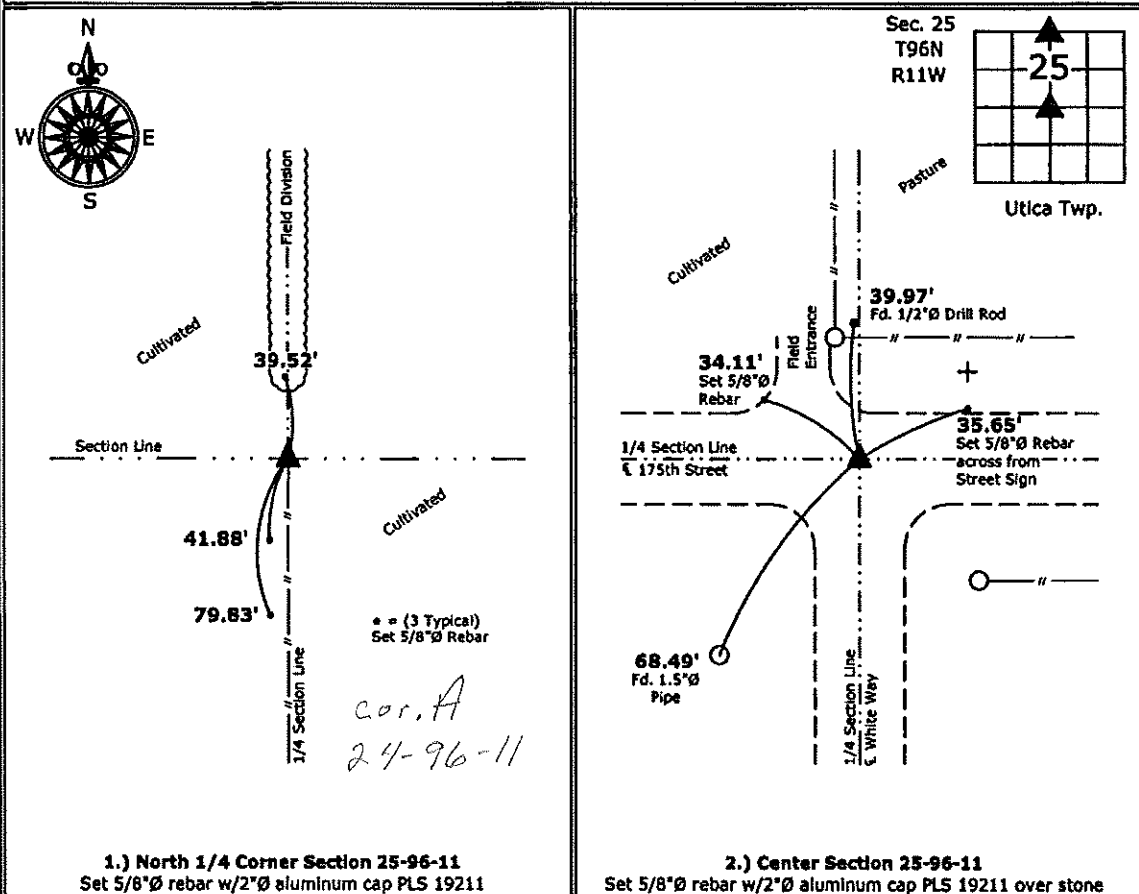
Monument Description and Remarks:

1.) North 1/4 Corner: Set 5/8"Ø rebar w/2"Ø aluminum cap 19211 0.5' East of a leaning wood corner post after comparing distances to adjacent corners in the Section.

2.) Center: Fd. bent 3/4"Ø square iron bar over stone, replaced bent bar with 5/8"Ø rebar w/2"Ø aluminum cap PLS 19211 at previous location of the base of the iron bar.

PLAN - VIEW

(Show a minimum of three reference ties to durable physical objects, relevant monuments and physical conditions that will enable recovery of the corner.)



I hereby certify that this land surveying document was prepared and the related survey work was performed by me or under my direct personal supervision and that I am a duly licensed Land Surveyor under the laws of the State of Iowa.

Kirk D. Reicks 7-17-12
Kirk D. Reicks Date:

License number 19211
My license renewal date is December 31, 2012.
Sheets covered by this seal: Individual sheet only

List Corners to be Indexed

Corners	Section	Twp.	Range
N 1/4	25	96	11
CTR	25	96	11

Project Number: 2012-096

FB: Chickasaw County 4, Pgs. 46, 47