

Instrument #: 2019-1760
11/12/2019 12:37:55 PM Total Pages: 1
SCC SECTION CORNER CERTIFICATES
Recording Fee: \$ 7.00
Shirley Troyna, Recorder, Chickasaw County Iowa



Prepared by & Return to: Herold - Reicks Surveying, 10 East Main Street, New Hampton, IA 50659, Ph. 641-394-2725

United States Public Land Survey Corner Certificate

Land Survey Monument situated in
Section **24**, Township **96** North, Range **11** West of the Fifth Principal Meridian, **Chickasaw** County, Iowa.
Not on file in the County Recorder's office.

This certificate is being prepared in compliance
with Iowa Code Chapter 355.11 because:

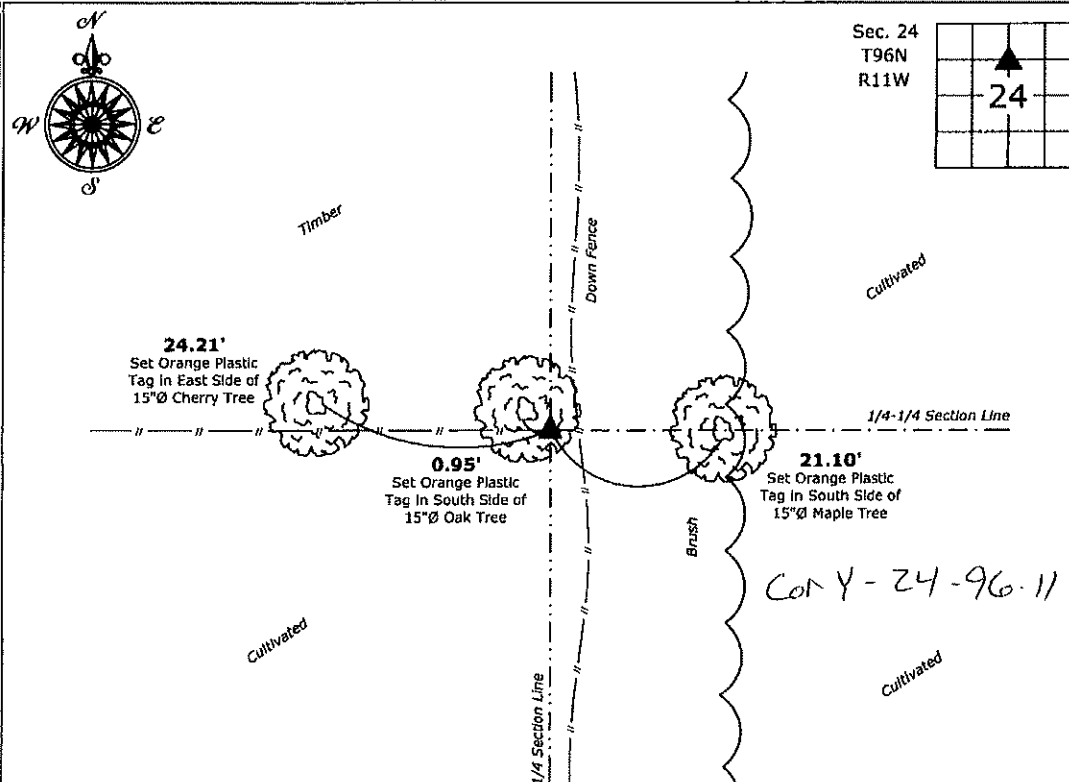
- ☒ There is no certificate on file for this corner.
☐ There are no longer three valid ties of record.
☐ There are changes to reference ties of record.
☐ There is change of monumentation of record.
☐ To clarify description of record monument (ties).

Monument Description and Remarks:

Southeast Corner NE 1/4-NW 1/4: Set 5/8"Ø Rebar with Aluminum Cap PLS 19211 equidistant and online
between the North 1/4 Corner and Center of said Section.

Plan View

(Show a minimum of three reference ties to durable physical objects, relevant monuments and physical conditions that will enable recovery of the corner.)



Southeast Corner NE 1/4-NW 1/4 of Section 24-96-11
Set 5/8"Ø Rebar with Aluminum Cap PLS 19211



I hereby certify that this land surveying document
was prepared and the related survey work was
performed by me or under my direct personal
supervision and that I am a duly licensed Land
Surveyor under the laws of the State of Iowa.

Kirk D. Reicks 11-11-19
Kirk D. Reicks Date:

License number 19211

My license renewal date is December 31, 2020.
Sheets covered by this seal: Individual sheet only

List Corner to be Indexed

Corner	Section	Twp.	Range
SE-NE-NW	24	96	11

Project Number: 2019-114

FB: Chickasaw 9, Pgs. 63-64

File: S:_Projects - NHO\County Control Systems - NHO\CHICKASAW\CHICK-24\CHICK-24.dwg, 11/11/2019 2:46:50 PM