

xy DOCUMENT No. **01422** FILED FOR RECORD THE 26th DAY OF January, 1998 AT 8:30 O'CLOCK A. M. BOOK 166 DEDS. PAGE 317

RECORDING FEE \$ 6.00 STATE OF IOWA, CHICKASAW COUNTY. Leitha H. Ross Recorder  
 TRANSFER FEE \$        By        Deputy

Prepared by: Erdman Engineering P.C. 708 Commerce Drive, P.O. Box 246, Decorah Iowa, 52101  
 Phone (319)382-4194, Fax (319)382-3623

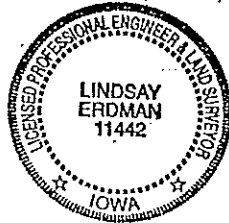
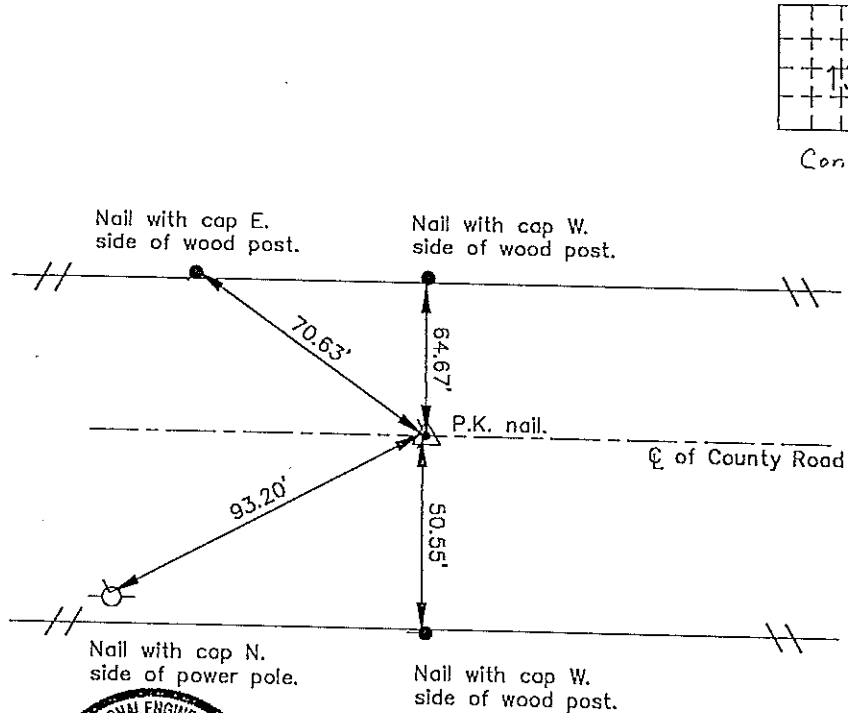
## United States Public Land Survey Corner Certificate of

Land Survey Monuments situated in Section 13 Township 96 Range 11 of the Fifth Principle Meridian,  
Chickasaw County, Iowa. Previously recorded in does not apply in County Recorders Office.

(Show reason for preparing this certificate, the evidence and detailed procedures used in establishing the corner positions and monumentation found or placed.)

Monument Description and Remarks: This certificate is prepared in accordance with Section 355.11 of the 1995 Code of Iowa. No previous certificate has been filed for this corner location. There was no record of the SSE 1/8 ever being set or tied out. No evidence was found that the corner had been set in the field. Therefore based on the S 1/4 and the SE 1/4 corners we set a P.K. nail on line and midway of the S 1/4 and SE 1/4 corners at the SSE 1/8 corner of section 13-96-11.

Plan-View  
 (Show a minimum of three reference ties to durable physical objects, relevant monuments and physical conditions that will enable recovery of the corner.)



Cor A1

I hereby certify that the survey work was completed and this certificate was prepared by me or under by direct supervision and that I am a duly registered land surveyor under the laws of the State of Iowa.

Signature: Lindsay Erdman, P.E. and L.S.

Date: 1/21/98 Reg. No. 11442

My license renewal date is December 31, 1998

List Corners to be Indexed			
Corners	Section	Twp.	Range
SSE 1/8	13	96	11

m:\c\jodt\jogals\section\1897\Chickasaw\97098\Doctd 12-18-97