



Prepared by & Winneshiek County Engineer 201 W Main Decorah, Iowa (563) 382-2951  
Return to: UNITED STATES PUBLIC LAND SURVEY CORNER CERTIFICATE

OF

Land Survey Monuments situated in Section 13, Township 96 North, Range  
11 West of the Fifth Principal Meridian, Chickasaw County, Iowa.  
Previously recorded in Instrument #: 2019-1762 in County Recorder's Office.  
(book, page, document number, etc.)

(Show reason for preparing this certificate, the evidence and detailed procedures used in establishing the corner positions and monumentation found or placed.)

Monument Description and Remarks: S 1/4 Corner of Section 13 - T96N - R11W:

Survey Mark Nail w/Stainless Steel Washer PLS 19211 Missing. Dug Hole at Mag Reading and Fd. 1/2" Rebar, Preconstruction.

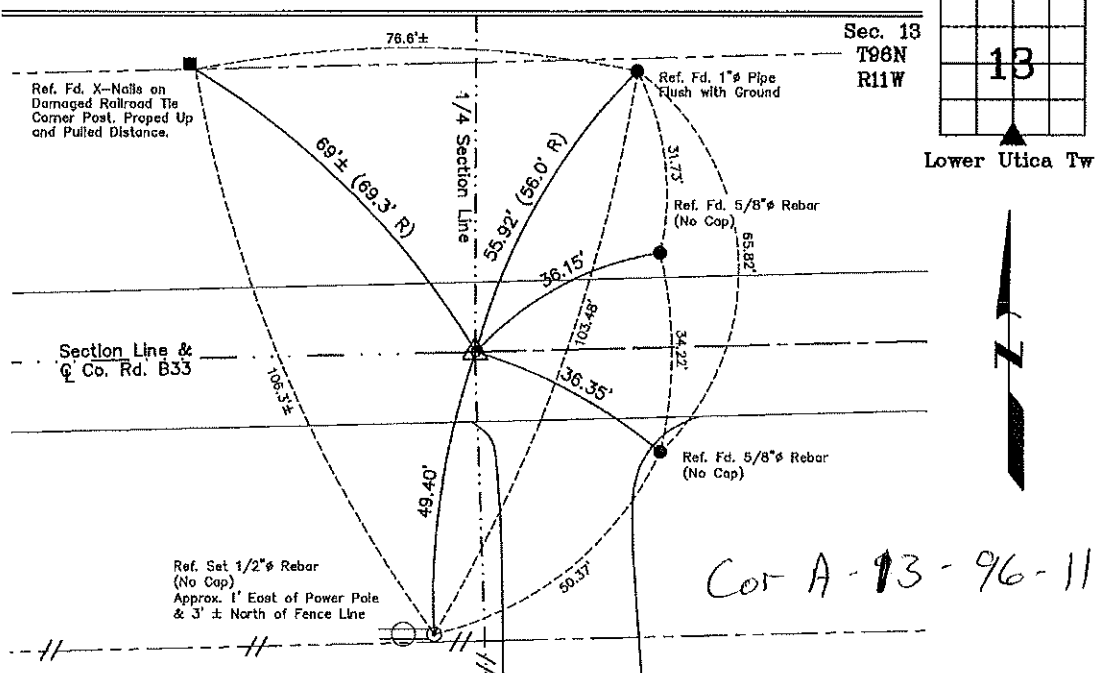
Set 1/2" Rebar w/2" Alum. Cap PLS 16961, on Top of Previous Rebar, Postconstruction.

HMA Resurfacing Project No. FM-C096(149)--55-96.

Used ties as shown below.

### PLAN - VIEW

(Show a minimum of three reference ties to durable physical objects, relevant monuments and physical conditions that will enable recovery of the corner.)



S 1/4 Corner of Section 13-96-11

Found 1/2" Rebar, Preconstruction.

Set 1/2" Rebar w/2" Alum. Cap PLS 16961, over Rebar, Postconstruction.



I hereby certify that this land surveying document was prepared and the related survey work was performed by me or under my direct personal supervision and that I am a duly Licensed Land Surveyor under the laws of the State of Iowa.

Michael J. Shimak 10-29-2020  
Michael J. Shimak Date  
License number 16961  
My license renewal date is December 31, 2021.  
Sheets covered by this seal: Individual

#### List Corners to be Indexed

Corners	Section	Twp.	Range
S 1/4 Corner	13	96N	11W



Prepared by & Return to: Herold - Reicks Surveying, 10 East Main Street, New Hampton, IA 50659, Ph. 641-394-2725

## United States Public Land Survey Corner Certificate

Land Survey Monument situated in  
Section 24, Township 96 North, Range 11 West of the Fifth Principal Meridian, Chickasaw County, Iowa.  
Not on file in the County Recorder's office.

This certificate is being prepared in compliance  
with Iowa Code Chapter 355.11 because:

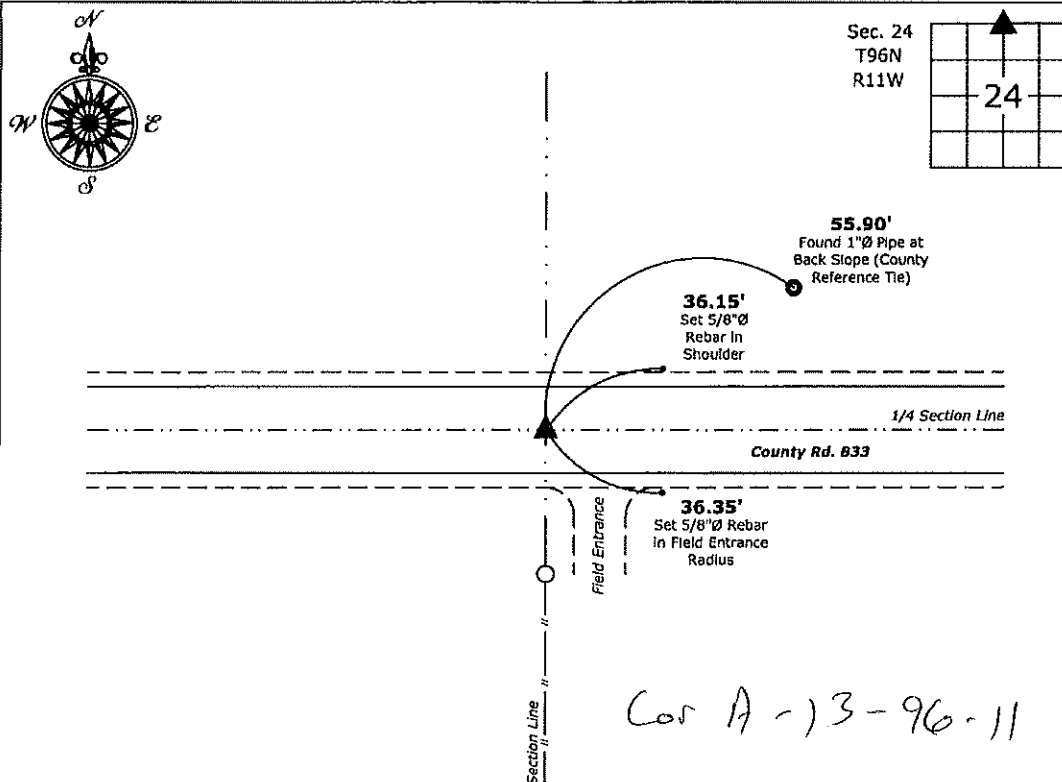
- ☒ There is no certificate on file for this corner.  
☐ There are no longer three valid ties of record.  
☐ There are changes to reference ties of record.  
☐ There is change of monumentation of record.  
☐ To clarify description of record monument (ties).

### Monument Description and Remarks:

**North 1/4 Corner:** Set Survey Mark Nail with Stainless Steel Washer PLS 19211 Over Magnetic Reading.  
Position matches one Remaining County Reference Tie.

### Plan View

(Show a minimum of three reference ties to durable physical objects, relevant monuments and physical conditions that will enable recovery of the corner.)



**North 1/4 Corner of Section 24-96-11**  
Set Survey Mark Nail with Stainless Steel Washer PLS 19211



I hereby certify that this land surveying document  
was prepared and the related survey work was  
performed by me or under my direct personal  
supervision and that I am a duly licensed Land  
Surveyor under the laws of the State of Iowa.

*Kirk D. Reicks* 11-11-19  
Kirk D. Reicks Date:

License number 19211

My license renewal date is December 31, 2020.  
Sheets covered by this seal: Individual sheet only

### List Corner to be Indexed

Corner	Section	Twp.	Range
N 1/4	24	96	11

Project Number: 2019-114

FB: Chickasaw 9, Pgs. 63-64

File: S:\Projects - NHO\County Control Systems - NHO\CHICKASAW\CHICK-24\CHICK-24.dwg, 11/11/2019 2:47:07 PM