

Prepared by & Return to: Harold - Reicks Surveying, 16 East Main Street, New Hampton, IA 50659, Ph. 641-394-2725

## UNITED STATES PUBLIC LAND SURVEY CORNER CERTIFICATE

Land Survey Monuments situated in Section 14, Township 96 North, Range 11 West of the Fifth Principal Meridian, Chickasaw County, Iowa. Previously recorded in Bk. 162, Pg. 201 in the County Recorder's office.

This certificate is being prepared in compliance with Iowa Code Chapter 355.11 because:

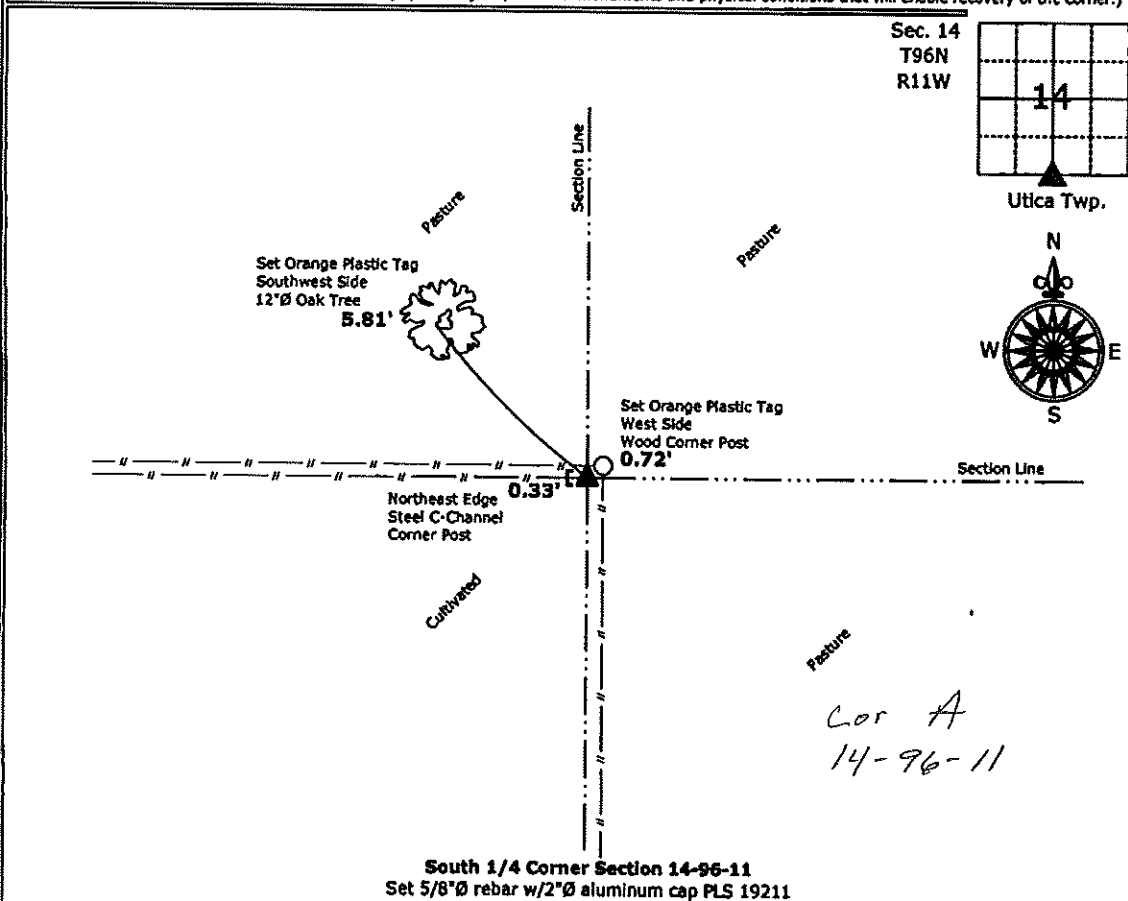
- ☐ There is no certificate on file for this corner.
- ☐ There are no longer three valid ties of record.
- ☒ There are changes to reference ties of record.
- ☒ There is change of monumentation of record.
- ☐ To clarify description of record monument (ties).

Monument Description and Remarks:

**South 1/4 Corner:** Previous monument missing, set 5/8"Ø rebar with 2"Ø aluminum cap PLS 19211 at record distance from the Southwest Corner per Plat of Survey made by L.P. Erdman, recorded in Bk. 111, Pg. 136 on file in the Chickasaw County Recorder's office, New Hampton, Iowa.

### PLAN - VIEW

(Show a minimum of three reference ties to durable physical objects, relevant monuments and physical conditions that will enable recovery of the corner.)



I hereby certify that this land surveying document was prepared and the related survey work was performed by me or under my direct personal supervision and that I am a duly licensed Land Surveyor under the laws of the State of Iowa.

*Kirk D. Reicks* 3-9-11  
Kirk D. Reicks Date:

License number 19211

My license renewal date is December 31, 2012.  
Sheets covered by this seal: Individual sheet only

List Corners to be Indexed			
Corners	Section	Twp.	Range
S 1/4	14	96	11

Project Number: 2011-014

FB: Chickasaw County 1, Pgs. 68-69

DOCUMENT NO. **00838** FILED FOR RECORD THE 17th DAY OF October, 1996 AT 8:52 O'CLOCK A.M. BOOK 162 DEED PAGE 201

RECORDING FEE \$ 6.00 STATE OF IOWA, CHICKASAW COUNTY. By Leitha M. Koss Recorder  
 TRANSFER FEE \$          Deputy

Prepared by: Erdman Engineering P.C. 708 Commerce Drive, P.O. Box 246, Decorah Iowa, 52101  
 Phone (319)382-4194, Fax (319)382-3623

## United States Public Land Survey Corner Certificate of

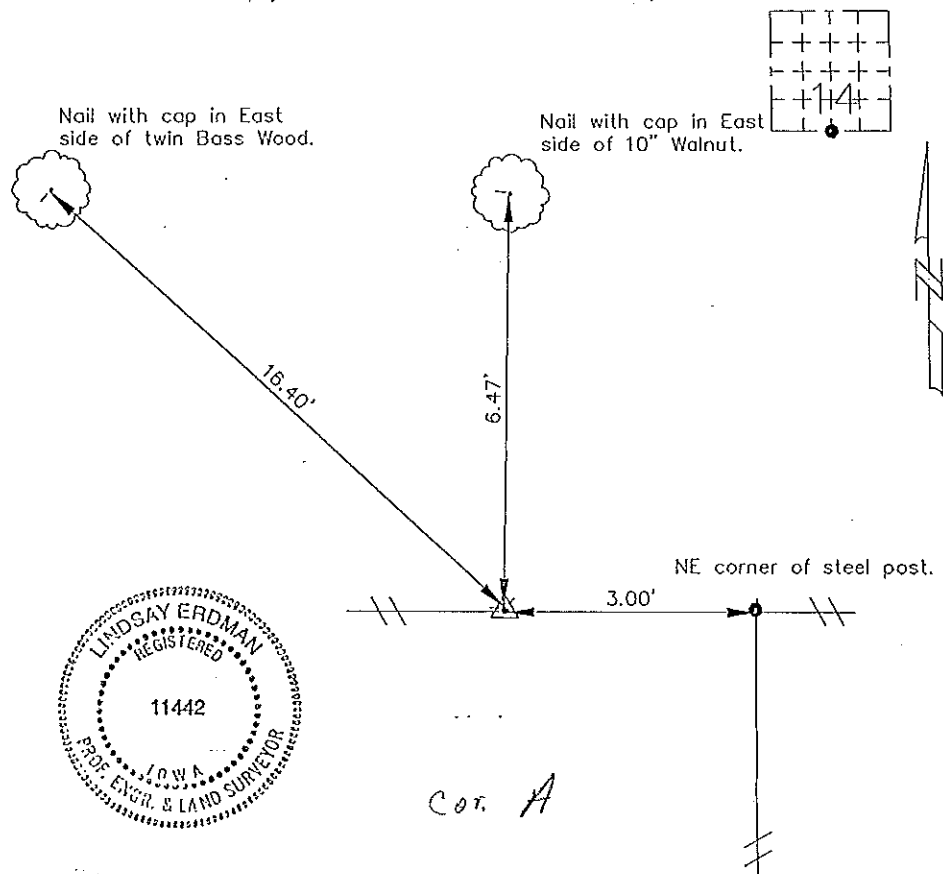
Land Survey Monuments situated in Section 14 Township 96 Range 11 of the Fifth Principle Meridian, Chickasaw County, Iowa. Previously recorded in does not apply in County Recorders Office.

(Show reason for preparing this certificate, the evidence and detailed procedures used in establishing the corner positions and monumentation found or placed.)

Monument Description and Remarks: This certificate is prepared in accordance with Section 355.11 of the 1995 Code of Iowa. No previous certificate has been filed for this corner location. We found no record of the S 1/4 corner of Section 14-96-11 being set or tied out. We found an AC nail at the SE corner of the section and a 3/4" bar at the SW corner of the section from County Ties. Based on plat from Book 111 page 136 in the Chickasaw County Recorder's Office we found four 5/8" pipes on the West line of Lot 2 in the SW 1/4 of Sec. 14-96-11. Based on this we set a 1/2" bar with cap RLS #11442 at the S 1/4 corner of Sec. 14-96-11 midway between the SW and the SE corners of this section and on the south line of Lot 2 in the SW 1/4 of Section 14-96-11.

### Plan-View

(Show a minimum of three reference ties to durable physical objects, relevant monuments and physical conditions that will enable recovery of the corner.)



I hereby certify that the survey work was completed and this certificate was prepared by me or under by direct supervision and that I am a duly registered land surveyor under the laws of the State of Iowa.

Signature Lindsay Erdman  
 Lindsay Erdman, P.E. and L.S.

Date: 10/14/96 Reg. No. 11442

My license will be renewed January 1, 1997

List Corners to be Indexed			
Corners	Section	Twp.	Range
S 1/4	14	96	11