

DOCUMENT No. 00840 FILED FOR RECORD THE 17th DAY OF STATE OF IOWA, CHICKASAW COUNTY.  
RECORDING FEE \$ 6.00 October 19 26 AT 8:52 By Leitha N. Ross, Recorder  
TRANSFER FEE \$ O'CLOCK A.M. BOOK 162 Deeds PAGE 203 By Leitha N. Ross, Deputy

Prepared by: Erdman Engineering P.C. 708 Commerce Drive, P.O. Box 246, Decorah Iowa, 52101  
Phone (319)382-4194, Fax (319)382-3623

### United States Public Land Survey Corner Certificate

15 of

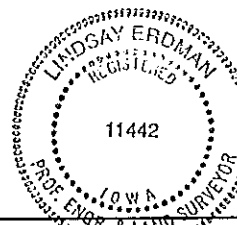
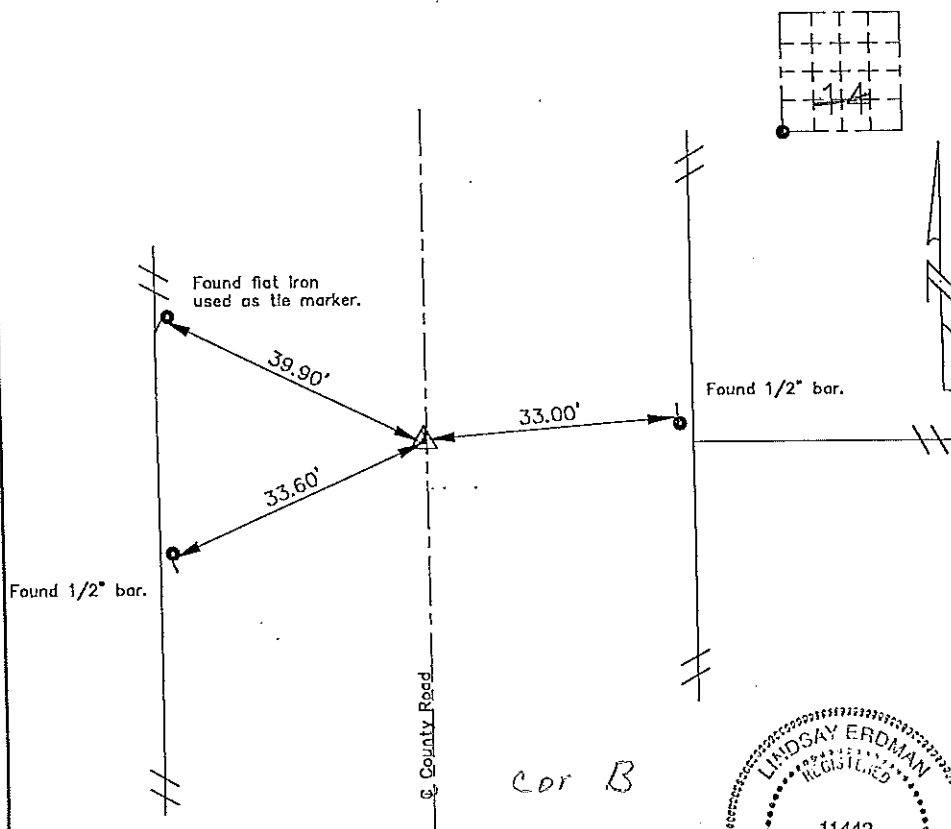
Land Survey Monuments situated in Section 14 Township 96 Range 11 of the Fifth Principle Meridian, Chickasaw County, Iowa. Previously recorded in Book 162 p.56 In County Recorders Office.

(Show reason for preparing this certificate, the evidence and detailed procedures used in establishing the corner positions and monumentation found or placed.)

Monument Description and Remarks: This certificate is prepared in accordance with Section 355.11 of the 1995 Code of Iowa. No previous certificate has been filed for this corner location. Based on County Engineer's Reference Ties we found a flat iron and two 1/2" bars all used as tie markers. From these ties we found a 5/8" twisted bar down  $\pm 1"$  below the crushed rock road surface at the SW corner of Sec. 14-96-11.

#### Plan-View

(Show a minimum of three reference ties to durable physical objects, relevant monuments and physical conditions that will enable recovery of the corner.)



I hereby certify that the survey work was completed and this certificate was prepared by me or under by direct supervision and that I am a duly registered land surveyor under the laws of the State of Iowa.

Signature Lindsay Erdman, P.E. and L.S.

Date: 10/19/96 Reg. No. 11442

My license will be renewed January 1, 1997

Corners	Section	Twp.	Range
SW	14	96	11