

Prepared by & Return to: Harold - Reicks Surveying, 19 East Main Street, New Hampton, IA 50659, Ph. 515-394-2725

UNITED STATES PUBLIC LAND SURVEY CORNER CERTIFICATE

Land Survey Monuments situated in Section 15, Township 96 North, Range 11 West of the Fifth Principal Meridian, Chickasaw County, Iowa. 1., Not previously recorded in the County Recorder's office. 2.) Previously recorded as Document #2005-1695 in the County Recorder's office.

This certificate is being prepared in compliance with Iowa Code Chapter 355.11 because:

- 1.) ☒ There is no certificate on file for this corner.
☐ There are no longer three valid ties of record.
☐ There are changes to reference ties of record.
☐ There is change of monumentation of record.
☐ To clarify description of record monument (ties).

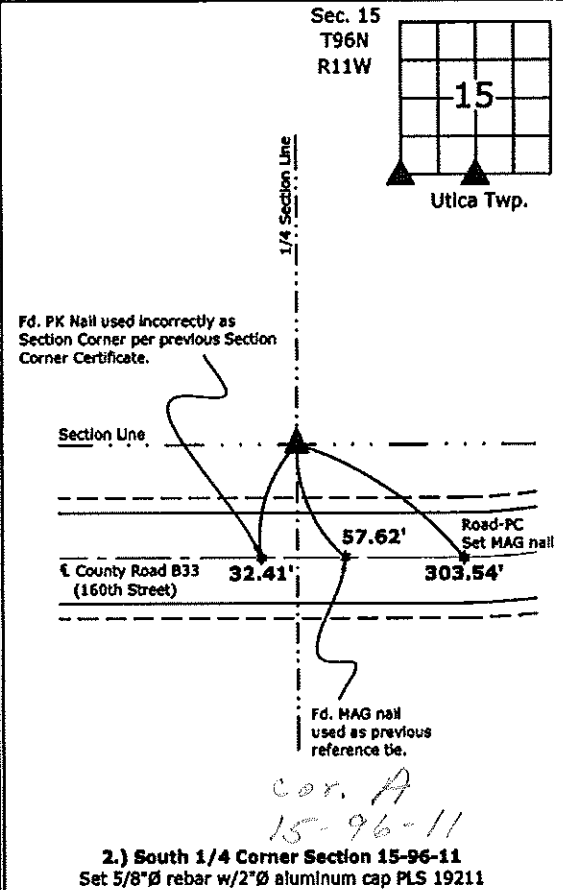
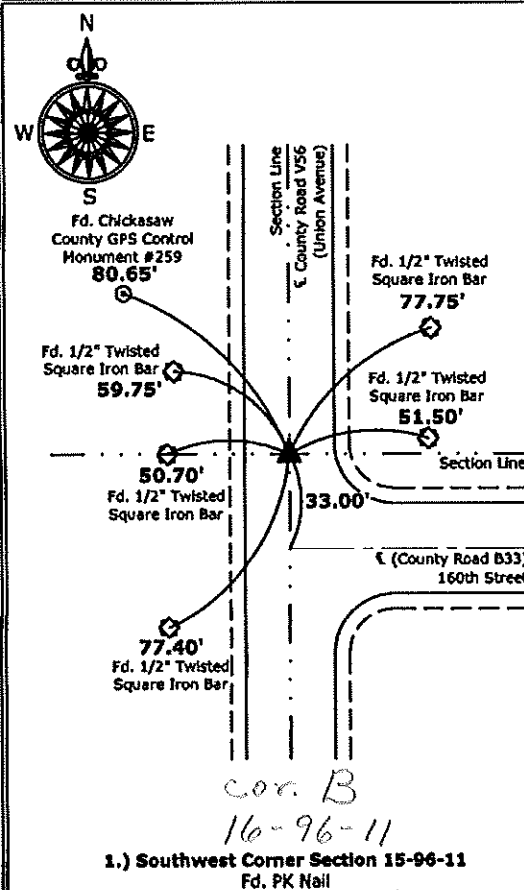
Monument Description and Remarks:

1.) Southwest Corner: Fd. PK Nail with information obtained at the County Engineer's Office.

2.) South 1/4 Corner: Set 5/8"Ø rebar w/2"Ø aluminum cap PLS 19211 33.00' North and parallel to E County Road B33 (160th Street) per Easements for Public Highway recorded in Book 78, Pages 643 and 667 on file in the Chickasaw County Recorder's office.

PLAN - VIEW

(Show a minimum of three reference ties to durable physical objects, relevant monuments and physical conditions that will enable recovery of the corner.)



I hereby certify that this land surveying document was prepared and the related survey work was performed by me or under my direct personal supervision and that I am a duly licensed Land Surveyor under the laws of the State of Iowa.
Kirk D. Reicks 5-31-12
Kirk D. Reicks Date:
License number 19211
My license renewal date is December 31, 2012.
Sheets covered by this seal: Individual sheet only

List Corners to be Indexed			
Corners	Section	Twp.	Range
SW	15	96	11
S 1/4	15	96	11

Project Number: 2012-088
FB: Chickasaw County 4, Pgs. 41, 42

2005-1695

DANIEL T. CRAWFORD, P.E. & L.S. Crawford Engineering & Surveying, Inc., Independence, Iowa 319/334-7077

UNITED STATES PUBLIC LAND SURVEY CORNER CERTIFICATE

OF

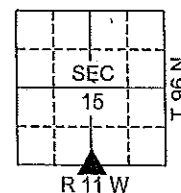
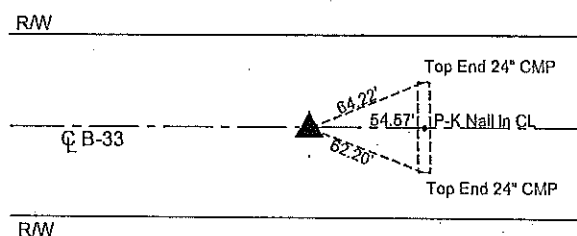
Land Survey Monuments situated in Section 15, Township 96 N, Range 11 W, of the Fifth Principal Meridian, Chickasaw County, Iowa.Previously recorded in N/A in County Recorder's Office.

Monument Description and Remarks:

Reason for preparing certificate: Corner certificate for South 1/4 Corner of Section 15 is not on file.Evidence and detailed procedure used to establish corner position: Corner position established, see below.Monumentation found or placed: Found P-K in ACC

PLAN-VIEW

(Show a minimum of three reference ties to durable physical objects, relevant monuments and physical conditions that will enable recovery of the corner).

S 1/4 Corner
Section 15-96-11
Fd. P-K in ACC

Cor. A

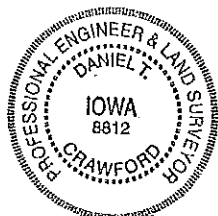
I hereby certify that the survey work was completed and this land surveying document was prepared by me or under my direct personal supervision and that I am a duly licensed land surveyor under the laws of the State of Iowa.

Signature: Daniel T. Crawford

DANIEL T. CRAWFORD, P.E. & L.S.

Date: 8-10-05 Reg. No. 8812My license renewal date is December 31, 2005

SEAL



Corners	List Corners to be Indexed		
	Section	Twp.	Range
South 1/4 Corner	15	96 W	11 W