



Prepared by & Return to: Herald - Reicks Surveying, 10 East Main Street, New Hampton, IA 50659, Ph. 641-394-2729

United States Public Land Survey Corner Certificate

Land Survey Monument situated in
Section 22, Township 96 North, Range 11 West of the Fifth Principal Meridian, Chickasaw County, Iowa.
Not on file in the County Recorder's office.

This certificate is being prepared in compliance
with Iowa Code Chapter 355.11 because:



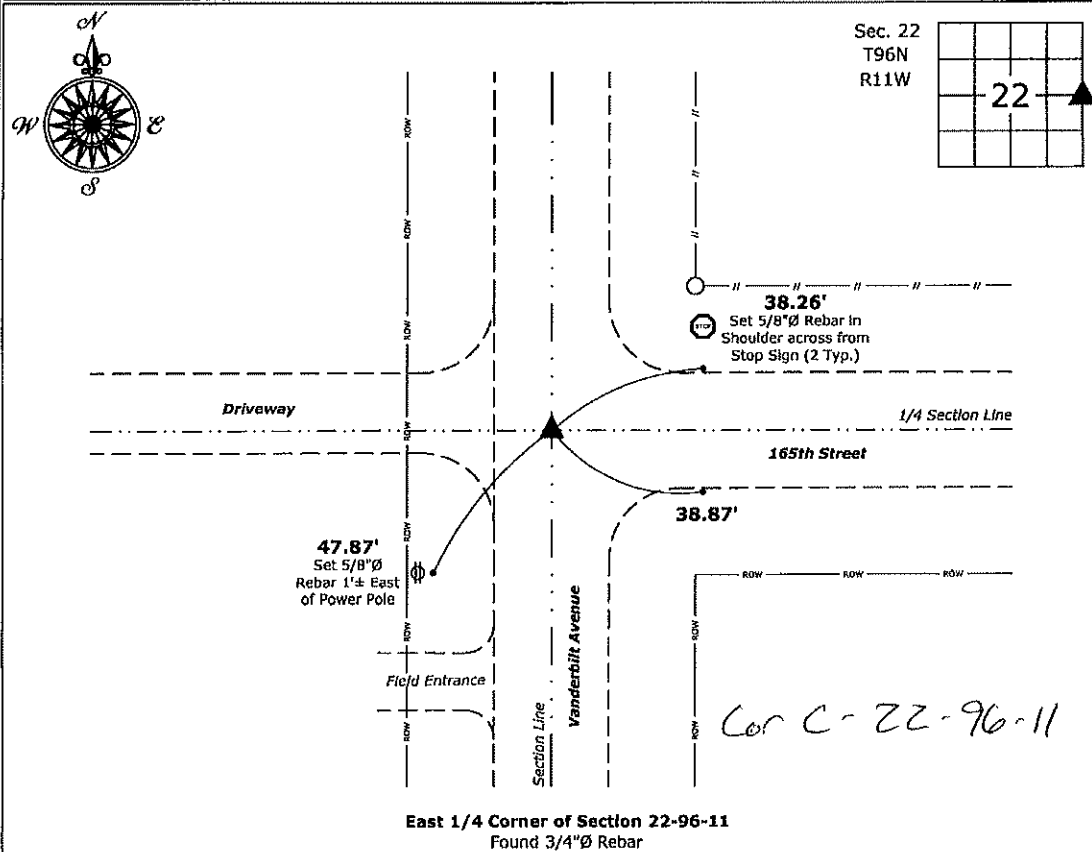
- ☒ There is no certificate on file for this corner.
- ☐ There are no longer three valid ties of record.
- ☐ There are changes to reference ties of record.
- ☐ There is change of monumentation of record.
- ☐ To clarify description of record monument (ties).

Monument Description and Remarks:

East 1/4 Corner: Found 3/4"Ø Rebar with information obtained from the County Engineer's Office, in Section
Ties Book, Township 96, Range 11.

Plan View

(Show a minimum of three reference ties to durable physical objects, relevant monuments and physical conditions that will enable recovery of the corner.)



East 1/4 Corner of Section 22-96-11
Found 3/4"Ø Rebar



I hereby certify that this land surveying document
was prepared and the related survey work was
performed by me or under my direct personal
supervision and that I am a duly licensed Land
Surveyor under the laws of the State of Iowa.

Kirk D. Reicks 2-14-2020
Kirk D. Reicks Date:

License number 19211
My license renewal date is December 31, 2020.
Sheets covered by this seal: Individual sheet only

List Corner to be Indexed

Corner	Section	Twp.	Range
E 1/4	22	96	11

Project Number: 2020-009

FB: Chickasaw 10, Pgs. 10-12