

United States Public Land Survey Corner Certificate

Land Survey Monument situated in
Section **21**, Township **96** North, Range **11** West of the Fifth Principal Meridian, **Chickasaw** County, Iowa.
On file in **Document #2017-2112** in the County Recorder's Office.

This certificate is being prepared in compliance with Iowa Code Chapter 355.11 because:

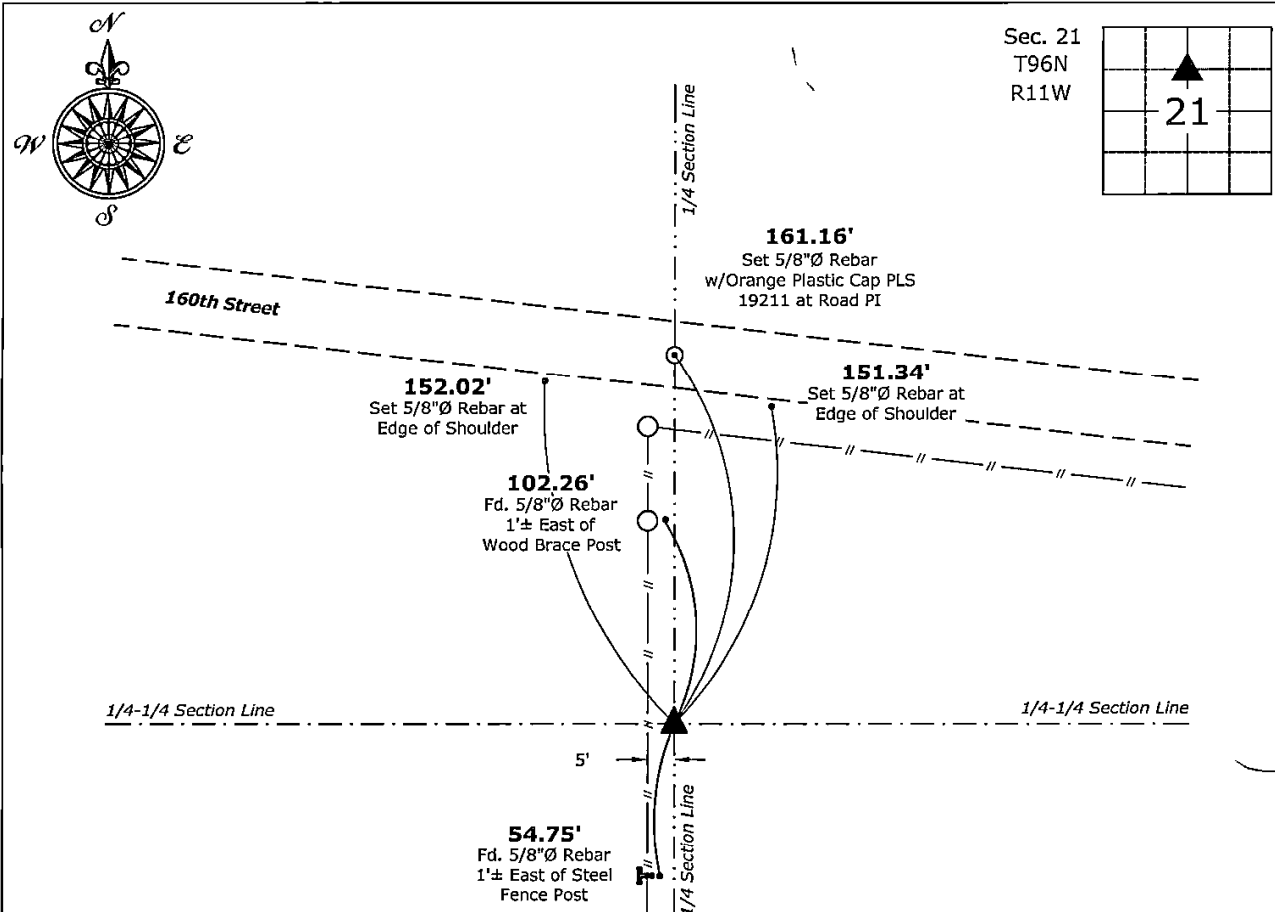
- ☐ There is no certificate on file for this corner.
☒ There are no longer three valid ties of record.
☐ There are changes to reference ties of record.
☐ There is change of monumentation of record.
☐ To clarify description of record monument (ties).

Monument Description and Remarks:

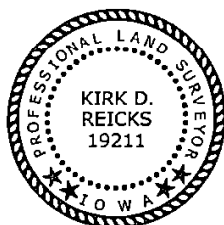
Northeast Corner of the SE 1/4 - NW 1/4: Found 5/8"Ø Rebar w/2"Ø Aluminum Cap PLS 19211 with information obtained from the previously recorded Section Corner Certificate.

Plan View

(Show a minimum of three reference ties to durable physical objects, relevant monuments and physical conditions that will enable recovery of the corner.)



Northeast Corner of the SE 1/4 - NW 1/4 of Section 21-96-11
Found 5/8"Ø Rebar w/2"Ø Aluminum Cap PLS 19211



I hereby certify that this land surveying document was prepared and the related survey work was performed by me or under my direct personal supervision and that I am a duly licensed Land Surveyor under the laws of the State of Iowa.

Karl D. Keith 10-14-2024

Kirk D. Reicks

Date:

License number 19211

My license renewal date is December 31, 2024.

My license renewal date is December 31, 2024:
 Sheets covered by this seal: Individual sheet only

List Corner to be Indexed

Corner	Section	Twp.	Range
NE-SE-NW	21	96	11

Project Number: 2024-111

FB: Chickasaw 13, Pgs. 17-18

File: S:_ Projects - NHO\County Control Systems - NHO\CHICKASAW\CHICK-23\CHICK-23-2024.dwg, 10/14/2024 10:32:06 AM