



Prepared by & Return to: Harold - Reicks Surveying, 10 East Main Street, New Hampton, IA 50659, Ph. 641-394-2725

United States Public Land Survey Corner Certificate

Land Survey Monument situated in
Section 15, Township 96 North, Range 11 West of the Fifth Principal Meridian, Chickasaw County, Iowa.
On file in Document #2012-1044 in the County Recorder's office.

This certificate is being prepared in compliance
with Iowa Code Chapter 355.11 because:



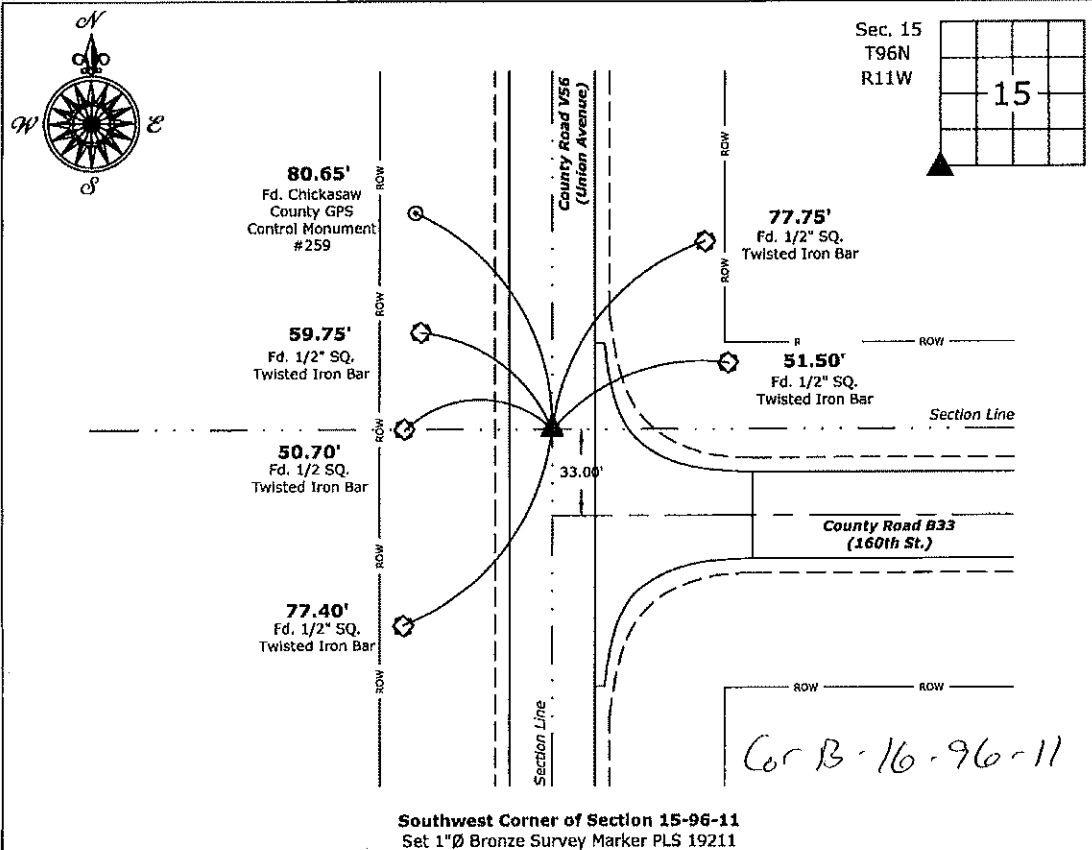
- ☐ There is no certificate on file for this corner.
- ☐ There are no longer three valid ties of record.
- ☐ There are changes to reference ties of record.
- ☒ There is change of monumentation of record.
- ☐ To clarify description of record monument (ties).

Monument Description and Remarks:

Southwest Corner: Set 1"Ø Bronze Survey Marker PLS 19211 at previous location (Found PK Nail) with
coordinates of the Corner obtained prior to highway reconstruction, Project No. FM-C019(89)--55-19.

Plan View

(Show a minimum of three reference ties to durable physical objects, relevant monuments and physical conditions that will enable recovery of the corner.)



Southwest Corner of Section 15-96-11
Set 1"Ø Bronze Survey Marker PLS 19211



I hereby certify that this land surveying document
was prepared and the related survey work was
performed by me or under my direct personal
supervision and that I am a duly licensed Land
Surveyor under the laws of the State of Iowa.

Kirk D. Reicks 6-17-20
Kirk D. Reicks Date:

License number 19211
My license renewal date is December 31, 2020.
Sheets covered by this seal: Individual sheet only

List Corner to be Indexed

Corner	Section	Twp.	Range
SW	15	96	11

Project Number: 2019-810

FB: 2019 Construction, Pgs. 14-36

Prepared by & Return to: Harold - Reicks Surveying, 19 East Main Street, New Hampton, IA 50659, Ph. 515-394-2725

UNITED STATES PUBLIC LAND SURVEY CORNER CERTIFICATE

Land Survey Monuments situated in Section 15, Township 96 North, Range 11 West of the Fifth Principal Meridian, Chickasaw County, Iowa. 1., Not previously recorded in the County Recorder's office. 2.) Previously recorded as Document #2005-1695 in the County Recorder's office.

This certificate is being prepared in compliance with Iowa Code Chapter 355.11 because:

- 1.) ☒ There is no certificate on file for this corner.
☐ There are no longer three valid ties of record.
☐ There are changes to reference ties of record.
☐ There is change of monumentation of record.
☐ To clarify description of record monument (ties).

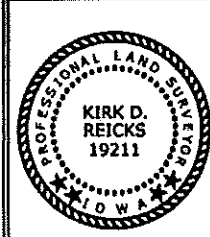
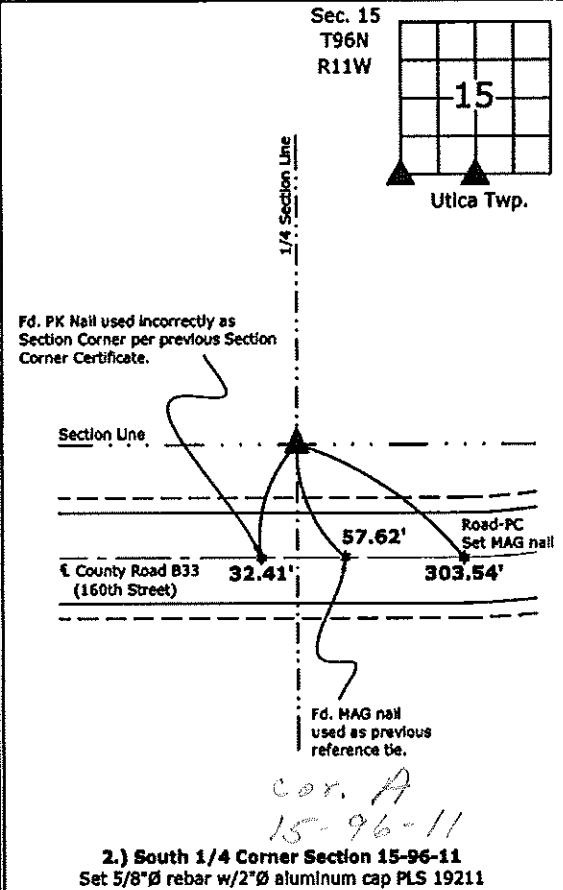
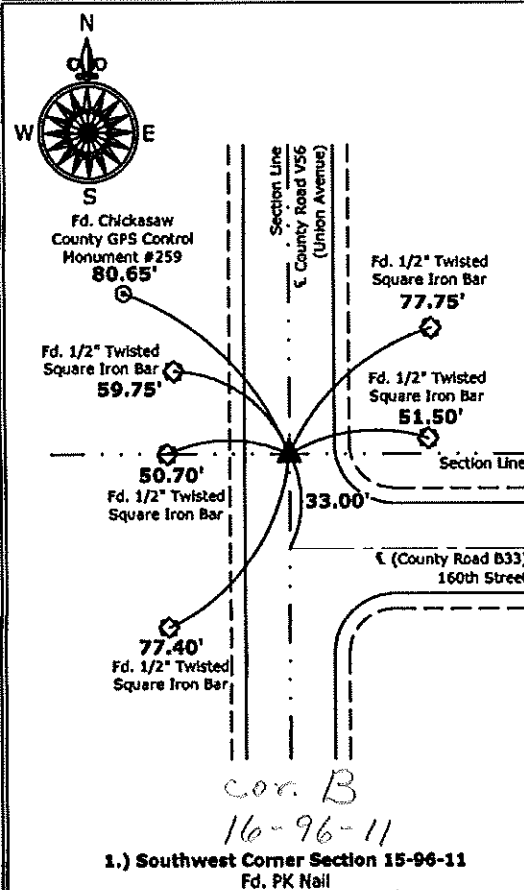
Monument Description and Remarks:

1.) Southwest Corner: Fd. PK Nail with information obtained at the County Engineer's Office.

2.) South 1/4 Corner: Set 5/8"Ø rebar w/2"Ø aluminum cap PLS 19211 33.00' North and parallel to E County Road B33 (160th Street) per Easements for Public Highway recorded in Book 78, Pages 643 and 667 on file in the Chickasaw County Recorder's office.

PLAN - VIEW

(Show a minimum of three reference ties to durable physical objects, relevant monuments and physical conditions that will enable recovery of the corner.)

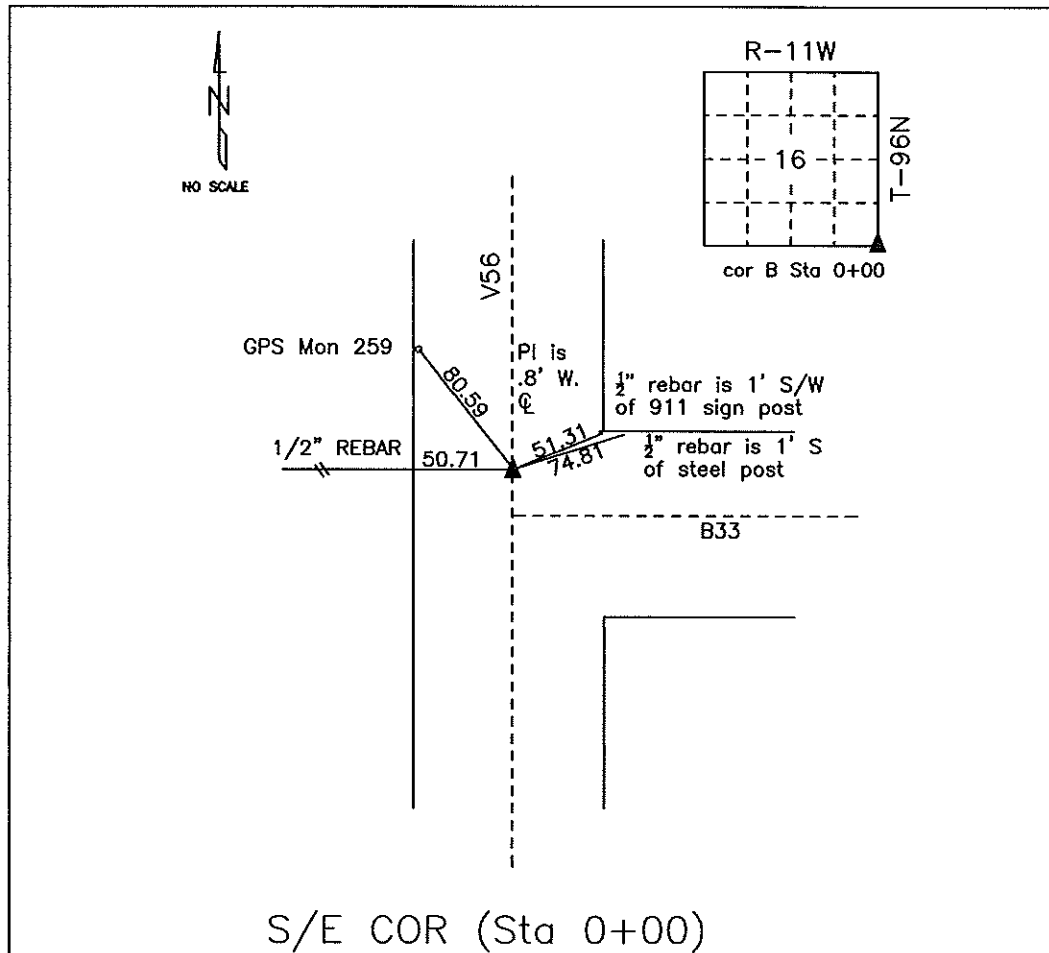


I hereby certify that this land surveying document was prepared and the related survey work was performed by me or under my direct personal supervision and that I am a duly licensed Land Surveyor under the laws of the State of Iowa.
Kirk D. Reicks 5-31-12
Kirk D. Reicks Date:
License number 19211
My license renewal date is December 31, 2012.
Sheets covered by this seal: Individual sheet only

List Corners to be Indexed			
Corners	Section	Twp.	Range
SW	15	96	11
S 1/4	15	96	11
Project Number: 2012-088			
FB: Chickasaw County 4, Pgs. 41, 42			

COUNTY ENGINEER'S SECTION CORNER PRESERVATION RECORD

LAND SURVEY MONUMENT LOCATED IN SECTION 16, TOWNSHIP 96 N
NORTH, RANGE 11 W, OF THE 5TH P.M. Chickasaw COUNTY, IOWA
PREVIOUSLY RECORDED NONE



MONUMENT DESCRIPTION AND NARRATIVE Found PK nail in HMA mat

From Chickasaw County Project plans SN-188(9) found PI is 0.8' west of center line. Information was also
found in the county engineer tie book.

All ties are GPS surveyed.

I AM NOT A REGISTERED LAND SURVEYOR UNDER THE LAWS OF THE STATE OF IOWA

JIM FOSTER CHICKASAW CO. DATE: 07/23/10