

Prepared by: Erdman Engineering, P.C., 708 Commerce Drive ,P.O. Box 246, Decorah, Iowa, (563)382-4194

UNITED STATES PUBLIC LAND SURVEY CORNER CERTIFICATE
OF

Land Survey Monuments situated in Section 21, Township 96 North, Range 11 West, of the Fifth Principal Meridian, Chickasaw County, Iowa, Previously recorded in does not apply in the County Recorder's Office.

Monument Description and Remarks:

This certificate is prepared in accordance with Section 355.11 of the Code of Iowa. No previous certificates have been filed for these corner locations.

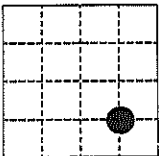
SE 1/16 Corner: We found no record of the SE 1/16 Corner being set. We found no evidence of a monument in the field other than the county road and fence lines running north and south. We set a 1/2" diameter steel bar with 1 1/2" aluminum cap #11442 at the center of the existing 50' wide county road right-of-way and in line with the fence lines running north and south as the SE 1/16 Corner of Section 21, Township 96 North, Range 11 West.

S 1/8 Corner: We found no record of the S 1/8 Corner being set. We found no evidence of a monument in the field other than an existing fence line running east and west. We found the SE corner and set the SW Corner and Center Section. We computed the location of the S 1/8 Corner. We set a 1/2" diameter steel bar with 1 1/2" aluminum cap #11442 on line between the S 1/4 Corner and the Center Section and on the extension of the fence line running east as the S 1/8 Corner of Section 21, Township 96 North, Range 11 West.

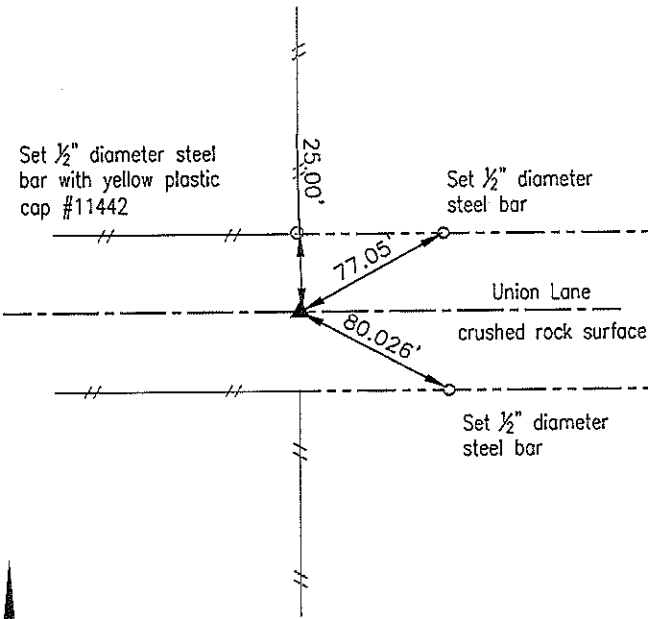
PLAN-VIEW
(NOT TO SCALE)

SE 1/16 CORNER

Set 1/2" diameter steel bar with 1 1/2" aluminum cap #11442

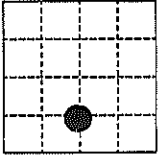


SECTION 21

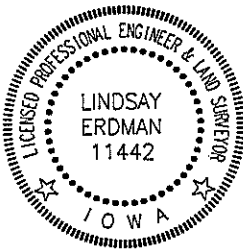
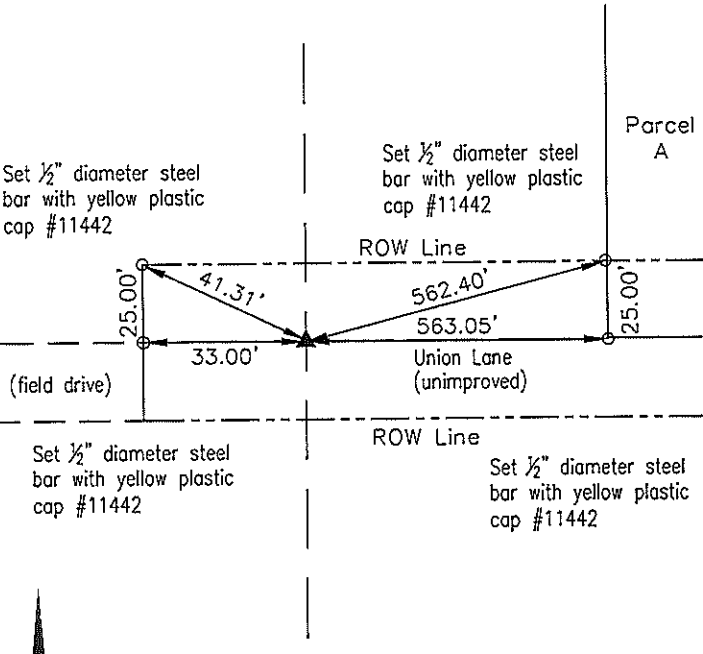


S 1/8 CORNER

Set 1/2" diameter steel bar with 1 1/2" aluminum cap #11442



SECTION 21



I hereby certify that this land surveying document was prepared and the related survey work was performed by me or under my direct personal supervision and that I am a duly licensed Land Surveyor under the laws of the State of Iowa.

Lindsay Erdman 1/21/15
Date

Lindsay Erdman, P.E. & P.L.S.
Licensed Professional Land Surveyor
Iowa License Number 11442
My License renewal date is December 31, 2016
Pages or sheets covered by this seal: THIS SHEET ONLY

List Corner(s) to be Indexed

Corner(s)	Section	Township	Range
SE 1/16	21	96	11
S 1/8	21	96	11

ERDMAN
ENGINEERING, P.C.

CIVIL ENGINEERING & LAND SURVEYING