

Instrument #: 2017-2115
12/13/2017 02:48:43 PM Total Pages: 1
SCC SECTION CORNER CERTIFICATES
Recording Fee: \$ 7.00
Cindy Messersmith, Recorder, Chickasaw County Iowa



Prepared by & Return to: Herald - Reicks Surveying, 101 East Main Street, New Hampton, IA 50659, Ph. 641-394-2725

United States Public Land Survey Corner Certificate

Land Survey Monument situated in
Section 21, Township 96 North, Range 11 West of the Fifth Principal Meridian, Chickasaw County, Iowa.
Not on file in the County Recorder's office.

This certificate is being prepared in compliance
with Iowa Code Chapter 355.11 because:

- ☒ There is no certificate on file for this corner.
☐ There are no longer three valid ties of record.
☐ There are changes to reference ties of record.
☐ There is change of monumentation of record.
☐ To clarify description of record monument (ties).

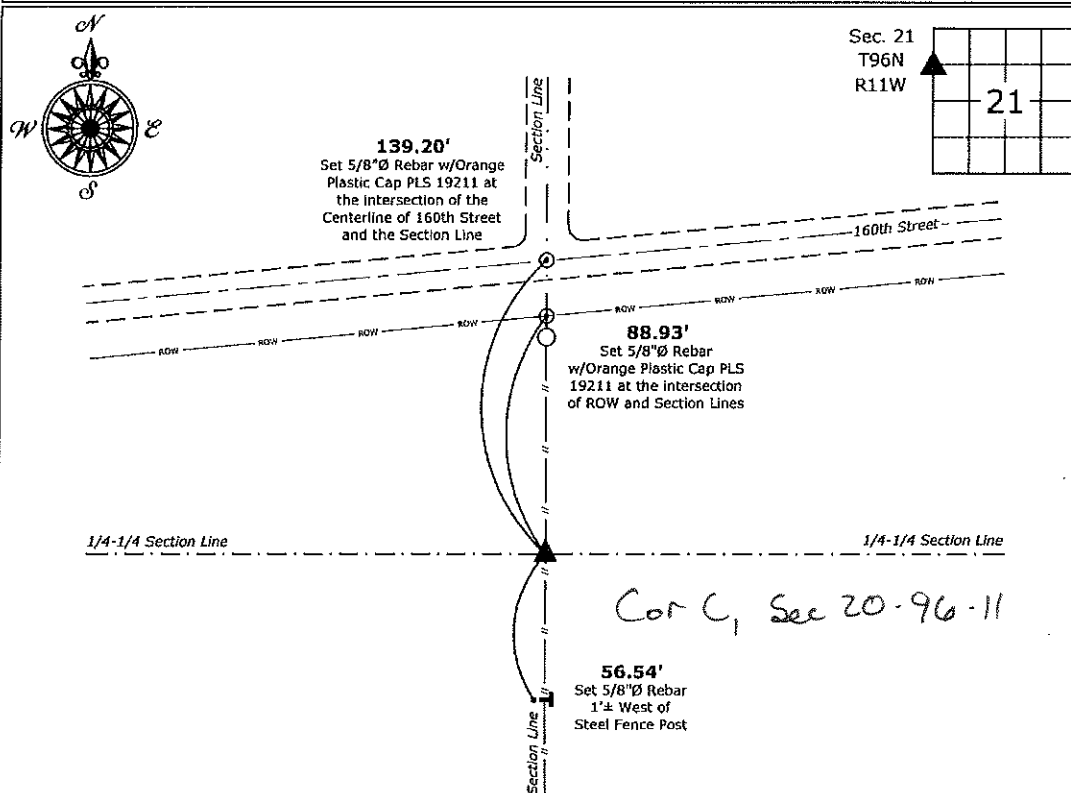
Monument Description and Remarks:

Southwest Corner NW 1/4 - NW 1/4: Set 5/8"Ø rebar w/2"Ø aluminum cap PLS 19211 equidistant and online between the Northwest and West 1/4 Corners of said Section.

An extensive search of all of the records within the County offices was performed as part of the section corner recovery. No records were located of the perpetuation of a monument at this corner.

Plan View

(Show a minimum of three reference ties to durable physical objects, relevant monuments and physical conditions that will enable recovery of the corner.)



Southwest Corner NW 1/4 - NW 1/4 of Section 21-96-11
Set 5/8"Ø rebar w/2"Ø aluminum cap PLS 19211



I hereby certify that this land surveying document
was prepared and the related survey work was
performed by me or under my direct personal
supervision and that I am a duly licensed Land
Surveyor under the laws of the State of Iowa.

Kirk D. Reicks 12-13-17
Kirk D. Reicks Date:

License number 19211
My license renewal date is December 31, 2018.
Sheets covered by this seal: Individual sheet only

List Corner to be Indexed

Corner	Section	Twp.	Range
SW-NW-NW	21	96	11

Project Number: 2017-125

FB: Chickasaw 9, Pgs. 10-13

File: S:_C3D Projects\County Control Systems\CHICKASAW\CHICK-23\CHICK-23.dwg, 12/13/2017 9:25:31 AM