

Chickasaw Co. Recorder  
Cindy Messersmith  
Fee Book 2014-0393  
03/31/2014 @02:42 PM  
SEC COR CERT  
Book: Page: # Pages: 1  
Total Fees: \$7.00

Prepared by & Return to: Herald - Reicks Surveying, 10 East Main Street, New Hampton, IA 50659, Ph. 641-394-2725

## UNITED STATES PUBLIC LAND SURVEY CORNER CERTIFICATE

Land Survey Monuments situated in Section <sup>19</sup>20, Township 96 North, Range 11 West of the Fifth Principal Meridian, Chickasaw County, Iowa. 1.) & 2.) Previously recorded not in the County Recorder's office.

This certificate is being prepared in compliance with Iowa Code Chapter 355.11 because:

- 1 & 2 ☒ There is no certificate on file for this corner.  
☐ There are no longer three valid ties of record.  
☐ There are changes to reference ties of record.  
☐ There is change of monumentation of record.  
☐ To clarify description of record monument (ties).

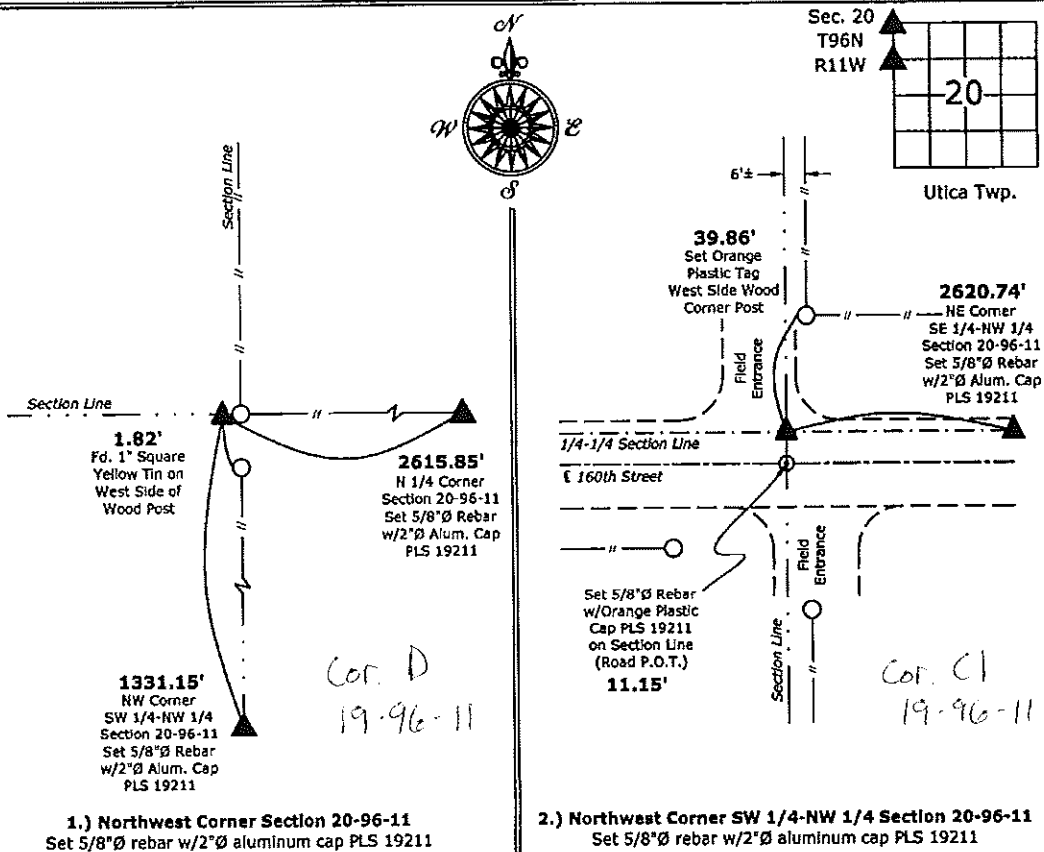
Monument Description and Remarks:

1.) Northwest Corner: Set 5/8"Ø rebar with 2"Ø aluminum cap PLS 19211 at an existing fence corner after comparing distances to adjacent corners in the Section.

2.) Northwest Corner SW 1/4-NW 1/4: Set 5/8"Ø rebar with 2"Ø aluminum cap PLS 19211 equidistant and online between the Northwest and West 1/4 Corners of Section 20.

### PLAN - VIEW

(Show a minimum of three reference ties to durable physical objects, relevant monuments and physical conditions that will enable recovery of the corner.)



I hereby certify that this land surveying document was prepared and the related survey work was performed by me or under my direct personal supervision and that I am a duly licensed Land Surveyor under the laws of the State of Iowa.

*Kirk D. Reicks* 3-31-14  
Kirk D. Reicks Date:  
License number 19211  
My license renewal date is December 31, 2014.  
Sheets covered by this seal: Individual sheet only

List Corners to be Indexed			
Corners	Section	Twp.	Range
NW	20	96	11
NW-SW-NW	20	96	11

Project Number: 2014-062

FB: Chickasaw 6, Pgs. 27-28

File: S:\CID Projects\County Control Systems\CHICKASAW\CHICK-23.dwg, 3/31/2014 11:48:15 AM