

# UNITED STATES PUBLIC LAND SURVEY CORNER CERTIFICATE

OF

Land Survey Monuments situated in Section 19, Township 96 North, Range 11 West, of the Fifth Principal Meridian, CHICKASAW County, Iowa.  
Previously recorded in NONE in County Recorder's Office.  
(book, page, document number, etc.)

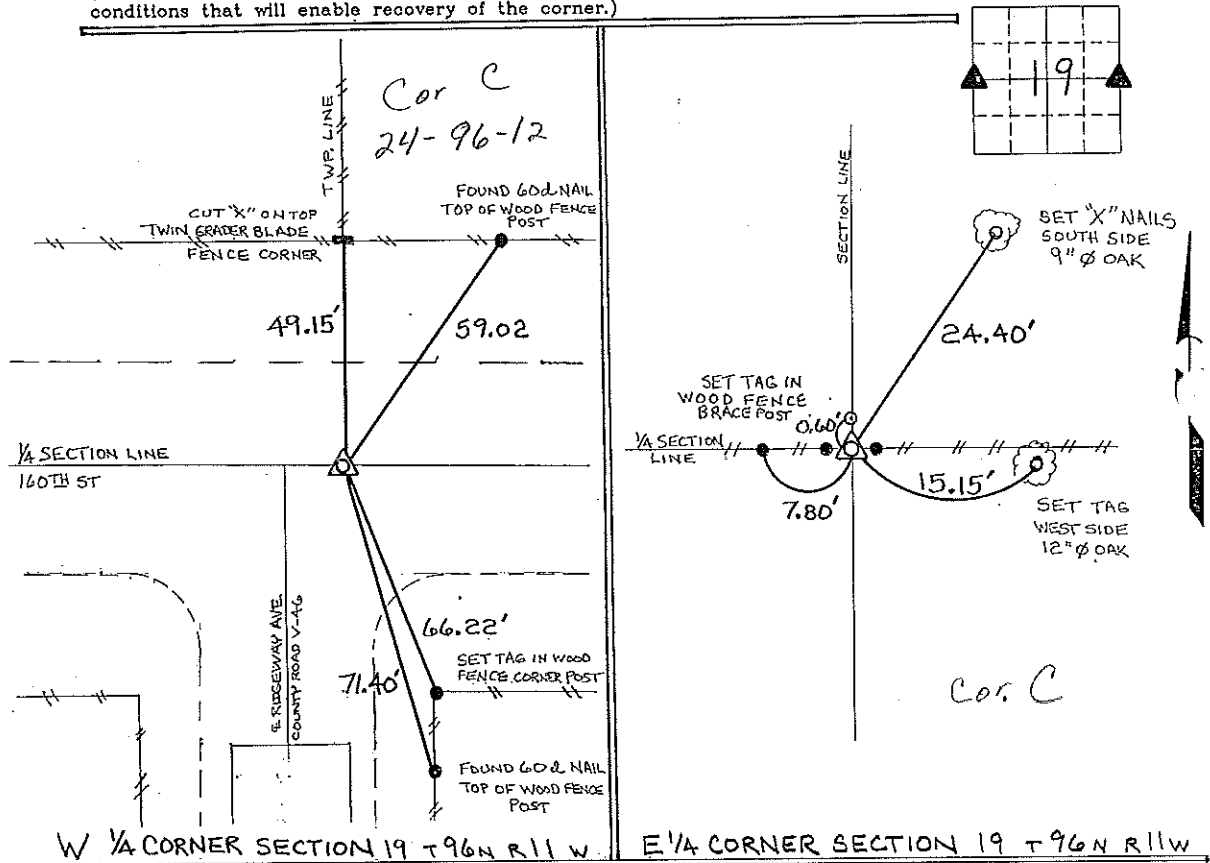
(Show reason for preparing this certificate, the evidence and detailed procedures used in establishing the corner positions and monumentation found or placed.)

Monument Description and Remarks: W 1/4 CORNER SECTION 19 T 96 N R 11 W:  
FOUND 1/2" SQUARE TWISTED IRON BAR & 160TH ST. AND ON THE TOWNSHIP LINE.

E 1/4 CORNER SECTION 19 T 96 N R 11 W: FOUND 8"X8"X10" GRANITE STONE WITH A POINTED TOP BETWEEN 2 FENCE POSTS, SET 1/2" Ø REBAR W/CAP TO GO 0.60' NORTH.

## PLAN - VIEW

(Show a minimum of three reference ties to durable physical objects, relevant monuments and physical conditions that will enable recovery of the corner.)

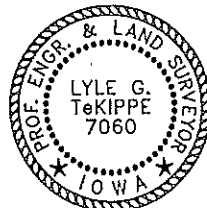


I hereby certify that the survey work was completed and this certificate was prepared by me or under my direct personal supervision and that I am a duly registered land surveyor under the laws of the state of Iowa.

Signature: Lyle G. TeKippe  
Lyle G. TeKippe

Date: 12-27-95 Reg. No. 7060  
My Registration Renewal Date is December 31, 1996

Seal



Corners	Section	Twp.	Range
W 1/4	19	96N	11 W
Cor C -	24-96-11		
E 1/4	19	96N	11 W
Corner C -	19-96-11		

*Placed in tie box,  
1/3/96*

159-365

"County Engineer's Copy"