

Chickasaw Co. Recorder
Cindy Messersmith
Fee Book 2016-1664
12/07/2016 @12:01PM
SCC SEC COR CERT
Book: Page: # Pages: 1
Total Fees: \$7.00

Prepared by & Return to: Herold - Reicks Surveying, 10 East Main Street, New Hampton, IA 50659, Ph. 641-394-2725

United States Public Land Survey Corner Certificate

Land Survey Monument situated in
Section 7, Township 96 North, Range 11 West of the Fifth Principal Meridian, Chickasaw County, Iowa.
Not on file in the County Recorder's office.

This certificate is being prepared in compliance with Iowa Code Chapter 355.11 because:

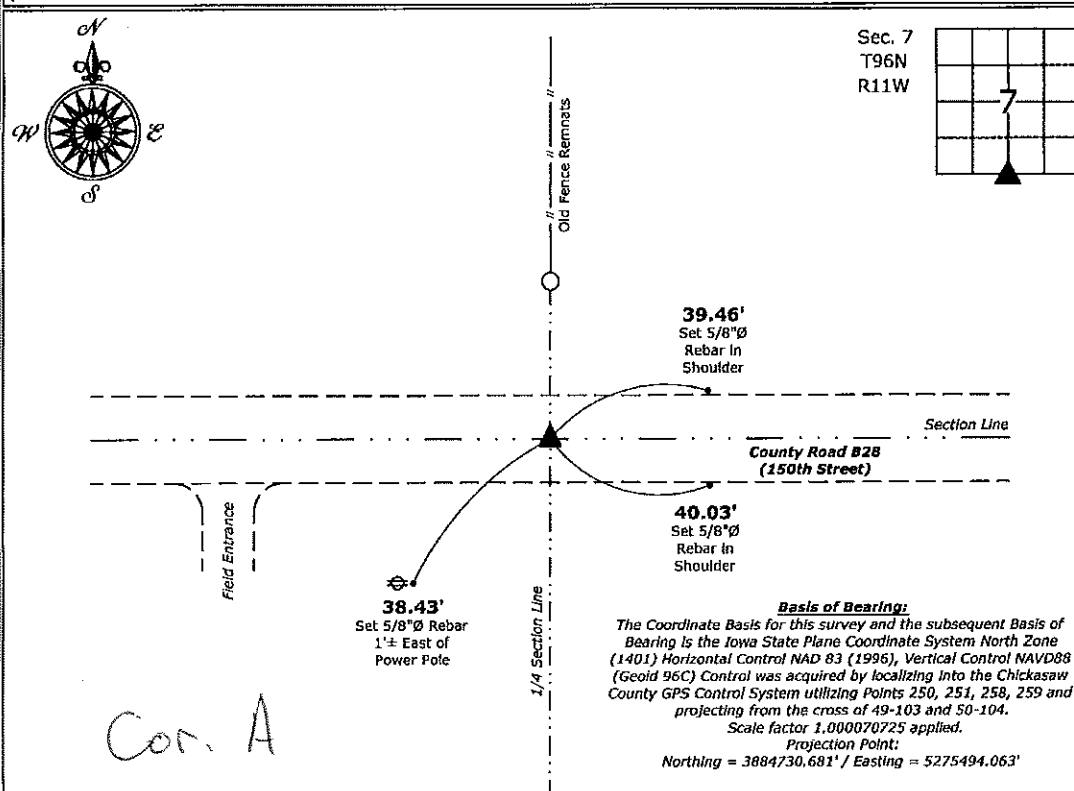
- ☒ There is no certificate on file for this corner.
☐ There are no longer three valid ties of record.
☐ There are changes to reference ties of record.
☐ There is change of monumentation of record.
☐ To clarify description of record monument (ties).

Monument Description and Remarks:

South 1/4 Corner: Fd. 8" x 10" Blue Granite Stone with information obtained from the County Engineer's office. Set 5/8"Ø rebar w/2"Ø aluminum cap PLS 19211, S 47°17'26" W, 0.46 feet from stone to add magnetic detection.

Plan View

(Show a minimum of three reference ties to durable physical objects, relevant monuments and physical conditions that will enable recovery of the corner.)



South 1/4 Corner of Section 7-96-11

Fd. 8" x 10" Blue Granite Stone
Set 5/8"Ø rebar w/2"Ø aluminum cap PLS 19211, S 47°17'26" W, 0.46' to add magnetic detection



I hereby certify that this land surveying document was prepared and the related survey work was performed by me or under my direct personal supervision and that I am a duly licensed Land Surveyor under the laws of the State of Iowa.

Kirk D. Reicks 12-7-16
Kirk D. Reicks Date:

License number 19211
My license renewal date is December 31, 2016.
Sheets covered by this seal: Individual sheet only

List Corner to be Indexed

Corner	Section	Twp.	Range
S 1/4	7	96	11

Project Number: 2016-059

FB: Chickasaw Co. 8, Pgs. 15-16

File: S:\CSD Projects\County Control Systems\CHICKASAW\CHICK-15.dwg, 12/7/2016 11:28:50 AM